

Fig. 133

Standard Duty Beam Clamp

Size Range: 4" through 12"
Material: Carbon steel
Finish: ☐ Plain or ☐ Galvanized
Service: Clamp centers the load on beam to prevent distortion
Approvals: Complies with Federal Specification A-A-1192A (Type 21) WW-H-171-E (Type 21), ANSI/MSS SP-69 and MSS SP-58 (Type 21).
Fig. 133 UL Listed when used with 3/8" and 1/2" rod.
Components: Two half-clamps, pipe spacer and bolt with nut assembled.
Ordering: Figure number, width of flange, name and finish.
Note: Spacer is furnished for use with Fig. 290 weldless eye nuts.
Spacer may be removed for use with Fig 278 eye rods.

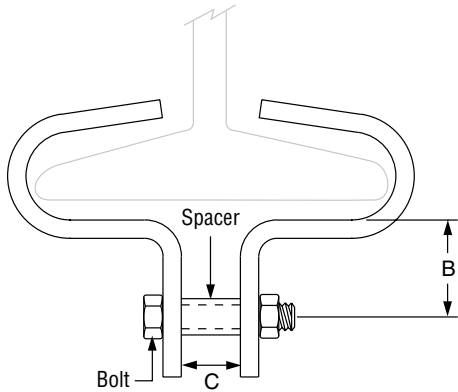
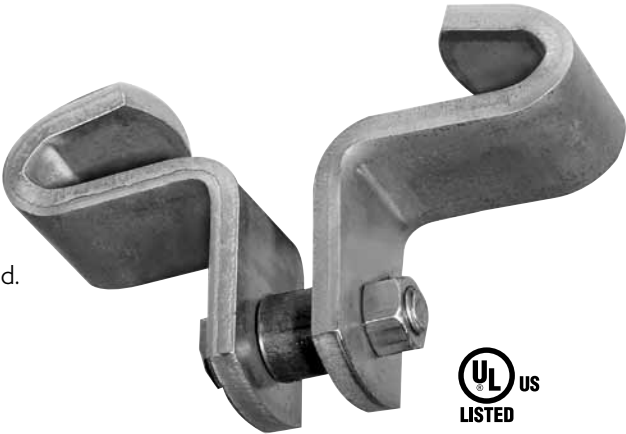


FIG. 133: LOADS (LBS) • DIMENSIONS (IN)					
	C	B	Bolt Size	Spacer O.D.	Max Load
Fig. 133	1/2	1 3/8	3/8	1 1/16	1,000

Flange Size		
Flange Width	Max Flange Thickness	Weight (lbs)
		Fig. 133 Std. Duty
4	1/2	0.91
5	5/8	1.00
6	3/4	1.15
7	7/8	1.29
8		1.44
9	1	—
10		—
11		—
12		—

PROJECT INFORMATION		APPROVAL STAMP
Project:		<input type="checkbox"/> Approved
Address:		<input type="checkbox"/> Approved as noted
Contractor:		<input type="checkbox"/> Not approved
Engineer:		Remarks:
Submittal Date:		
Notes 1:		
Notes 2:		