

☐ FIG. 7047, ☐ FIG. 7048 & ☐ FIG. 7049

Clamp-T, Cross

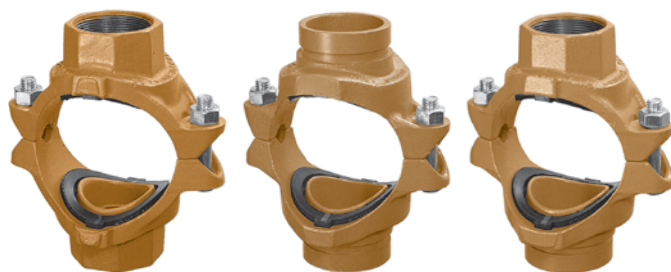


Fig. 7047

Fig. 7048

Fig. 7049

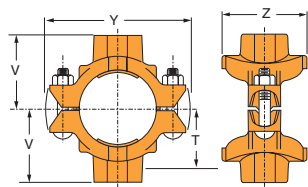


Fig. 7047 - Thread x Thread

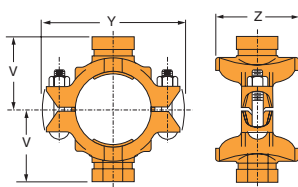


Fig. 7048 - Groove x Groove

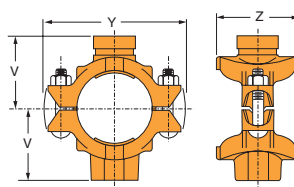


Fig. 7049 - Groove x Thread

The Gruvlok Clamp-T provides a branch or cross connection in light wall or standard wall steel pipe.

The Fig. 7045 Clamp-T female pipe thread branch is available with NPT or ISO 7/1 connection and the Fig. 7046 Clamp-T has grooved-end branch connection.

Clamp-T cross connections are available allowing greater versatility in piping design.

NOTE: 2 1/2" x 1 1/4" Figure 7046 cannot be used in cross configuration.



MATERIAL SPECIFICATIONS

ANSI BOLTS & HEAVY HEX NUTS:

Heat treated, oval neck track head bolts conforming to ASTM A 183 Grade 2 with a minimum tensile strength of 110,000 psi and heavy hex nuts of carbon steel conforming to ASTM A 563 Grade A or Grade B, or J995 Grade 2. Bolts and nuts are provided zinc electroplated as standard.

METRIC BOLTS & HEAVY HEX NUTS:

Heat treated, zinc electroplated oval-neck track head bolts made of carbon steel with mechanical properties per ISO 898-1 Class 8.8. Hex nuts are zinc electroplated followed by a yellow chromate dip.

STAINLESS STEEL BOLTS & NUTS:

Stainless steel bolts and nuts are also available. Contact an Anvil Representative for more information.

HOUSING:

Ductile Iron conforming to ASTM A 536, Grade 65-45-12 or Malleable Iron conforming to ASTM A 47, Grade 32510.

COATINGS:

- ☐ Rust inhibiting paint – Color: ORANGE (standard)
- ☐ Hot Dipped Zinc Galvanized (optional)
- ☐ Other Colors Available (IE: RAL3000 and RAL9000)

For other Coating requirements contact an Anvil Representative for more information.

GASKETS: Materials

Properties as designated in accordance with ASTM D 2000

- ☐ **Grade “E” EPDM** (Green color code)
-40°F to 230°F (Service Temperature Range)(-40°C to 110°C)
Recommended for water service, diluted acids, alkalis solutions, oil-free air and many other chemical services.
NOT FOR USE IN PETROLEUM APPLICATIONS.

- ☐ **Grade “EP” EPDM** (Green and Red color code)
-40°F to 250°F (Service Temperature Range)(-40°C to 121°C)
Recommended for water service, diluted acids, alkalis solutions, oil-free air and many other chemical services.
NOT FOR USE IN PETROLEUM APPLICATIONS.

For hot water applications the use of Gruvlok Extreme Temperature lubricant is recommended. NSF-61 Certified for cold and hot water applications up through 12".

- ☐ **Grade “T” Nitrile** (Orange color code)
-20°F to 180°F (Service Temperature Range)(-29°C to 82°C)
Recommended for petroleum applications. air with oil vapors and vegetable and mineral oils.
NOT FOR USE IN HOT WATER OR HOT AIR.

LUBRICATION:

- ☐ Standard Gruvlok
- ☐ Gruvlok Xtreme™ (Do Not use with Grade “L”)

Not for use in copper systems.

PROJECT INFORMATION		APPROVAL STAMP
Project:		<input type="checkbox"/> Approved
Address:		<input type="checkbox"/> Approved as noted
Contractor:		<input type="checkbox"/> Not approved
Engineer:		Remarks:
Submittal Date:		
Notes 1:		
Notes 2:		