

Fig. 69F

Adjustable Swivel Ring, Felt Lined

Size Range: 1/2" through 6" copper tube

Material: Carbon steel and felt with adhesive backing

Finish: Galvanized

Service: Recommended for suspension of non-insulated **stationary** copper tubing.

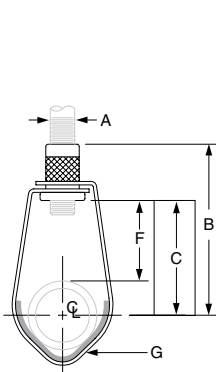
Maximum Temperature: 120° F

Approvals: Complies with Federal Specification A-A-1192A (Type 10), WW-H-171-E (Type 10), ANSI/MSS SP-69 and MSS SP-58 (Type 10).

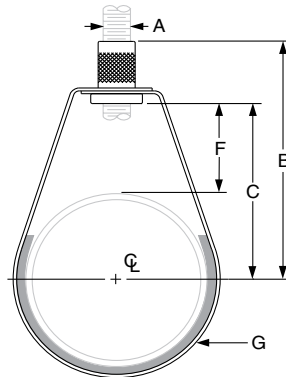
Features:

- The layer of felt separates the copper tubing from the steel ring for electrolytic resistance and also minimizes noise and vibration.
- Threads are countersunk so they cannot become burred or damaged.
- Knurled swivel nut provides vertical adjustment after tubing is in place.
- The captured nut is permanent in the bottom portion of band, allowing the hanger to be opened during installation if desired, but not allowing the nut to fall out.

Ordering: Specify felt ring size, figure number and name.



1/2" & 3/4" tube
1/2" through 1" Felted Ring



1" through 6" tube
1 1/4" through 6" Felted Ring

FELT LINED RING: IPS SIZING • DIMENSIONS (IN)

Pipe Size	Felted Ring Size
1/2	1/2 - 1
3/4	1 1/4
1	1 1/4
1 1/4	2
1 1/2	2
2	2 1/2
2 1/2	3
3	4
4	5
5	6

FIG. 69F: LOADS (LBS) • WEIGHT (LBS) • DIMENSIONS (IN)

Tube Size	Felted Ring Size	Max Load	Rod Size A	B	C	F	G Width	Weight
1/2	1/2 - 1	300	3/8	23/4	17/8	13/8	5/8	0.10
3/4				25/8	111/16	11/8		0.10
1				27/16	19/16	113/16		0.10
11/4				21/2	15/8	13/16		0.10
11/2	11/2			25/8	13/4	3/4		0.10
2	2			31/8	21/4	1		0.10
21/2	21/2	525	1/2	37/8	25/8	113/16	3/4	0.20
3	3			33/4	27/8			0.20
4	4			45/8	33/4	19/16		0.30
5	5	1,000		51/4	45/16	15/8		0.54
6	6			611/16	59/16	23/8		0.65

PROJECT INFORMATION

APPROVAL STAMP

Project:	<input type="checkbox"/> Approved
Address:	<input type="checkbox"/> Approved as noted
Contractor:	<input type="checkbox"/> Not approved
Engineer:	Remarks:
Submittal Date:	
Notes 1:	
Notes 2:	