

Fig. 100

Extended Pipe Clamp

Size Range: 1/2" through 8"
Material: Carbon steel
Finish: ☐ Plain or ☐ Galvanized
Service: For attachment to structure without use of rods.
Maximum Temperature: Plain 650° F, Galvanized 450° F
Ordering: Specify pipe size, figure number, name and finish.

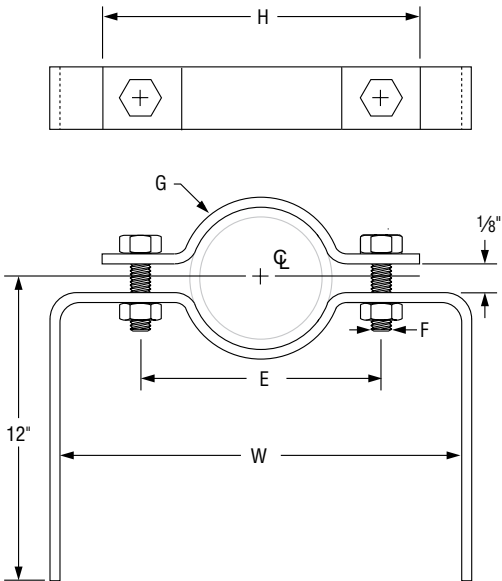


FIG. 100: WEIGHT (LBS) • DIMENSIONS (IN)						
Pipe Size	W	E	F	G Width	H	Weight
1/2	5 5/8	2 7/8	3/8	1	4 1/4	1.85
3/4	5 7/8	3 1/8		1 1/4	4 1/2	2.20
1	6 3/8	3 5/8			5	2.25
1 1/4	6 7/8	4 1/8			5 1/2	2.34
1 1/2	7 1/8	4 3/8			5 3/4	2.39
2	8 3/8	5 1/8	1/2		1 1/2	6 7/8
2 1/2	8 7/8	5 5/8		7 7/8		3.40
3	10	6 3/4		8 1/4		3.58
4	10 5/8	7 3/8		9 1/8		4.74
5	12 3/8	8 5/8		5/8		2
6	13 1/2	9 3/4	12		8.23	
8	15 1/2	11 3/4	14		9.25	

PROJECT INFORMATION		APPROVAL STAMP	
Project:		<input type="checkbox"/> Approved	
Address:		<input type="checkbox"/> Approved as noted	
Contractor:		<input type="checkbox"/> Not approved	
Engineer:		Remarks:	
Submittal Date:			
Notes 1:			
Notes 2:			