

Fig. 262

Strap Short

**Size Range:** 1/2" through 4"  
**Material:** Carbon steel  
**Finish:** ☐ Plain or ☐ Galvanized  
**Maximum Temperature:** 650° F  
**Approvals:** Complies with Federal Specification A-A-1192A (Type 26), WW-H-171-E (Type 26), ANSI/MSS SP-69 and MSS SP-58 (Type 26).  
**Ordering:** Specify pipe size, figure number, name and finish.  
**Note:** The acceptability of galvanized coatings at temperatures above 450°F is at the discretion of the end user.

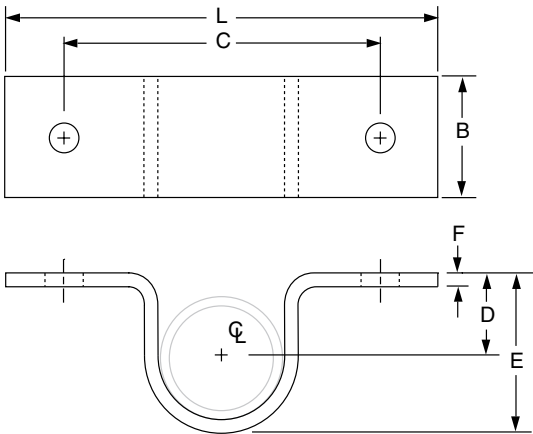


FIG. 262: LOADS (LBS) • WEIGHTS (LBS) • DIMENSIONS (IN)										
Pipe Size	Max Load		Weight	Screw or Bolt Size ■	L	B	C	D	E	F
	w/Lag Screws	w/Bolts to Steel								
½	300	410	0.20	Two #18 x 2 steel wood screws or two ⅜" bolts to steel	4	1¼	2¾	½	1⅛	⅛
¾			0.23		4⅜		3⅛	1⅙	1⅞	
1			0.26		4¾		3½	1⅙	1⅝	
1¼			0.36		5		3¾	1⅙	2⅛	
1½			0.54		5⅝		4⅛	1⅝	2½	
2			0.60		6⅝		5⅛	1¼	2¾	
2½	450	610	1.40	Two #18 x 3 steel wood screws or two ⅜" bolts to steel	6⅓	1½	5⅙	1¾	3⅝	¼
3			1.60		7⅝		6⅙	1⅞	4	
3½			1.80		7⅓		6⅙	2⅙	4⅝	
4			1.90		8⅜		7⅛	2⅝	5	

■ Screws or bolts not included

PROJECT INFORMATION		APPROVAL STAMP
Project:		<input type="checkbox"/> Approved
Address:		<input type="checkbox"/> Approved as noted
Contractor:		<input type="checkbox"/> Not approved
Engineer:		Remarks:
Submittal Date:		
Notes 1:		
Notes 2:		