

Fig. 291

Clevis Pin with Cotters

Size Range: 1/2" through 4"
Material: Carbon steel
Finish: ☐ Plain or ☐ Galvanized
Maximum Temperature: 650° F
Service: For use with type C variable spring hanger, type C constant support (Fig. 81-H only) and Fig. 66 welded beam attachment.
Ordering: Specify pin diameter, figure number, name, finish and if cotter pins are required.
Note: The acceptability of galvanized coatings at temperatures above 450°F is at the discretion of the end user.

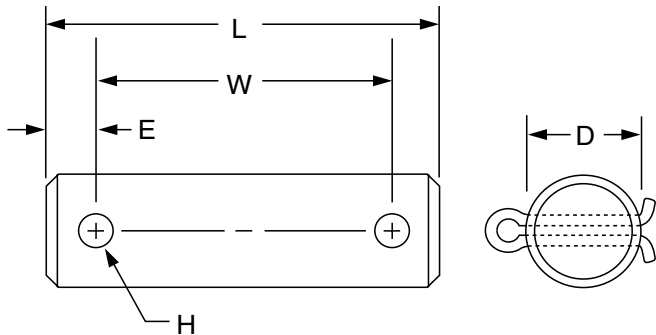
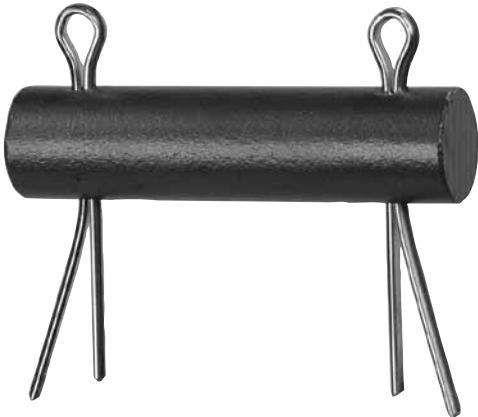


FIG. 291: LOADS (LBS) • WEIGHTS (LBS) • DIMENSIONS (IN)

Pin Dia. D	Max Load		Weight	L	W	E	H	Cotter Pin Size			
	650° F	750° F									
1½	730	572	0.12	2⅞	2⅛	⅜	⅝ ₃₂	⅛ x 1¼			
⅝	1,350	1,057	0.18	3⅛	2¾						
¾	2,160	1,691	0.29	3⅝	2⅞		⅞ ₃₂	¾	⅜ x 1½		
⅞	3,230	2,529	0.47	4¼	3½						
1	4,480	3,508	0.67	4	3¼		½	⅞ ₃₂	¼ x 2½		
1⅛	5,900	4,620	1.00	4¾	4						
1⅜	9,500	7,439	2.10	5⅝	4⅜	⅝	⅜	¾ x 3¼			
1⅝	13,800	10,805	3.30	6	5						
1⅞	18,600	14,564	4.80	7⅛	5⅞				¾	½	½ x 5
2¼	24,600	19,262	7.20								
2½	32,300	25,291	9.30	7⅝	6⅜	¾	½	½ x 6			
2¾	39,800	31,163	12.50	7⅞	6⅝						
3	49,400	38,680	16.60	8¼	6¾				¾	½	½ x 6
¾	60,100	47,058	20.00	8½	7						
¾	71,900	56,298	23.90	8¾	7¼						
¾	84,700	66,320	25.10	9½	8						
4	98,500	77,125	34.80	9¾	8¼						

PROJECT INFORMATION		APPROVAL STAMP	
Project:		<input type="checkbox"/> Approved	
Address:		<input type="checkbox"/> Approved as noted	
Contractor:		<input type="checkbox"/> Not approved	
Engineer:		Remarks:	
Submittal Date:			
Notes 1:			
Notes 2:			