

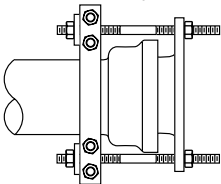
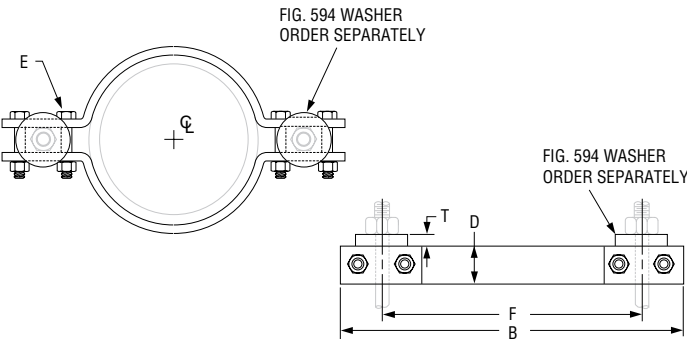
**Fig. 595**
**Socket Clamp for Ductile Iron or Cast Iron Pipe**

**Size Range:** 4" through 24"  
**Material:** Two carbon steel half bands and four bolts and nuts.  
**Finish:** ☐ Plain or ☐ Galvanized  
**Service:** Clamps ductile or cast iron mechanical joint piping or mechanical joint or socket joint fittings together to prevent separation or distortion of pipe line under excessive water pressure.  
**Approvals:** Complies with Federal Specification A-A-1192A (Type 8), ANSI/MSS SP-69 and MSS SP-58 (Type 8). Complies with the requirements of the National Fire Protection Association Standard NFPA-24 for Outside Protection.  
**Ordering:** Specify pipe size, figure number, name and finish.

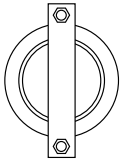


**Fig. 594**
**Socket Clamp Washer**

Two cast iron or steel washers, Fig. 594, are used with each Fig. 595 socket clamp and these must be ordered separately.  
**Ordering:** Specify washer size, figure number, name and finish.



Plug Strap for Bell End of Pipe



Pipe Anchor

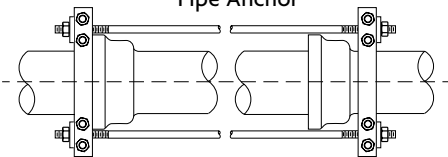


FIG. 595, FIG. 594: LOADS (LBS) • WEIGHT (LBS) • DIMENSIONS (IN)													
D.I./C.I. Pipe Size	Max Test Pressure (PSI)	Force* On Clamp	Weight		Pipe O.D.	B	D Width	Bolt Dia. E	F	T	Fig. 594 Washer Rod Dia.		
			Fig. 595 Clamp	Fig. 594 Washer									
4	250	4,550	12.8	1.1	5	14 <sup>5</sup> / <sub>8</sub>	2	5 <sub>8</sub>	9 <sup>5</sup> / <sub>8</sub>	5 <sub>8</sub>	3 <sub>4</sub>		
6		9,340	14.6		7 <sup>1</sup> / <sub>8</sub>	16 <sup>7</sup> / <sub>8</sub>			11 <sup>7</sup> / <sub>8</sub>				
8		16,080	23.6		9 <sup>5</sup> / <sub>16</sub>	19 <sup>1</sup> / <sub>8</sub>			14 <sup>1</sup> / <sub>8</sub>				
10		24,180	29.3		11 <sup>1</sup> / <sub>2</sub>	21 <sup>3</sup> / <sub>8</sub>			16 <sup>5</sup> / <sub>8</sub>				
12	120	34,230	40.3	1.7	13 <sup>1</sup> / <sub>2</sub>	25 <sup>1</sup> / <sub>8</sub>	2 <sup>1</sup> / <sub>2</sub>	3 <sub>4</sub>	19 <sup>5</sup> / <sub>8</sub>	3 <sub>4</sub>	1		
14		22,200	53.9		2.7	15 <sup>3</sup> / <sub>4</sub>		28 <sup>1</sup> / <sub>4</sub>	7 <sub>8</sub>			22 <sup>3</sup> / <sub>8</sub>	
16		27,760	76.5			17 <sup>7</sup> / <sub>8</sub>		31 <sup>3</sup> / <sub>8</sub>	1			25 <sup>3</sup> / <sub>8</sub>	
18		23,900	94.3			4.3		20	35 <sup>1</sup> / <sub>8</sub>			1 <sup>1</sup> / <sub>4</sub>	28 <sup>7</sup> / <sub>8</sub>
20		27,500	109.8	22 <sup>1</sup> / <sub>8</sub>	37 <sup>3</sup> / <sub>4</sub>		4 <sup>1</sup> / <sub>2</sub>	30 <sup>1</sup> / <sub>2</sub>					
24		26,200	148.6	5.8	26 <sup>3</sup> / <sub>8</sub>		44 <sup>1</sup> / <sub>4</sub>	5	1 <sup>1</sup> / <sub>2</sub>	36	1 <sup>1</sup> / <sub>4</sub>		1 <sup>1</sup> / <sub>2</sub>

\*Refers to Hydrostatic Test

PROJECT INFORMATION		APPROVAL STAMP	
Project:		<input type="checkbox"/> Approved	
Address:		<input type="checkbox"/> Approved as noted	
Contractor:		<input type="checkbox"/> Not approved	
Engineer:		Remarks:	
Submittal Date:			
Notes 1:			
Notes 2:			