

Installation, Operation and Maintenance Manual

Kwik-Change™ Zero Waste Reverse Osmosis

Model PWROKCZRO

PURE WATER

Important

Please read the entire manual before proceeding with the installation and startup. Your failure to follow any attached instructions or operating parameters may lead to the product's failure.

Save manual for future reference.



PWROKCZRO

Table of Contents

| | |
|--|----|
| Operational Parameters | 3 |
| Contents of Reverse Osmosis System | 3 |
| Tools Recommended For Installation | 3 |
| Drill a Hole for the Faucet in a Porcelain Sink | 3 |
| How To Use Quick-Connect Fittings For Tubing Connections | 4 |
| Punch a Hole for the Faucet in a Stainless Steel Sink | 3 |
| Faucet Installation | 5 |
| Installation of Hot and Cold water supply valves | 5 |
| Reverse Osmosis Module Mounting | 5 |
| Connect the Tubing to the Hot and Cold Water Valves | 5 |
| Tank Ball Valve Installation | 6 |
| Check Air Pressure in the Tank | 6 |
| Blue Tube Connection (From RO Module To The Tank) | 6 |
| Blue Tube Connection (From RO Module to the Faucet) | 6 |
| Start up Instructions | 6 |
| 6-Month System Maintenance | 7 |
| Annual System Maintenance | 7 |
| Membrane Replacement | 8 |
| Parts List / Unit Drawing | 9 |
| Troubleshooting | 10 |
| Arsenic Fact Sheet | 11 |
| Limited Warranty | 12 |

Note: Do not use with water that is microbiologically unsafe or of unknown quality without adequate disinfection before or after the system.

Introduction

Thank you for your purchase of a state of the art Watts Kwik-Change™ Zero Waste Reverse Osmosis (RO) water treatment system. Water quality concerns are becoming more of a focus for the public. You may have heard about contaminants in the drinking water, such as Arsenic, Perchlorate, Chromium, Cryptosporidium or Giardia. There may also be some local water issues such as high levels of Lead and Copper. This Watts water treatment system has been designed and tested to provide you with high-quality drinking water for years to come. The following is a brief overview of the system.

Your Reverse Osmosis System:

Osmosis is the process of water passing through a semi-permeable membrane in order to balance the concentration of contaminants on each side of the membrane. A semi-permeable membrane is a barrier that will pass some particles like clean drinking water, but not other particles like arsenic and lead.

Reverse osmosis uses a semi-permeable membrane; however, by applying pressure across the membrane, it concentrates contaminants (like a strainer) on one side of the membrane, producing crystal clear water on the other. This is why RO systems produce both clean drinking water and rinse water that is flushed from the system. This reverse osmosis system also utilizes carbon block filtration technology, and can therefore provide a higher quality drinking water than carbon filtration systems alone.

Your system is a three stage RO which is based upon separate treatment segments within the one complete water filtration system. These stages are as follows:

Stage 1 – Carbon filter, recommended change 6 months.

The first stage contains a 5-micron carbon block filter. This helps ensure that chlorine and other materials that cause bad taste and odor are greatly reduced.

Stage 2 – Membrane, recommended change 2 to 5 years.

Stage-2 is the heart of the reverse osmosis system, the RO membrane. This semi-permeable membrane will effectively take out TDS, Sodium and a wide range of contaminants such as Perchlorate, Chromium, Arsenic, Copper, Lead as well as Cysts, such as Giardia and Cryptosporidium. Because the process of extracting this high-quality drinking water takes time, your RO water treatment system is equipped with a storage tank.

Stage 3 - Carbon post filter, recommend change 12 months.

The final stage is a high-quality carbon filter. Drinking water enters this filter after the water storage tank, and it is used as a final polishing filter.

Note: Filter life may vary based upon local water conditions or use patterns.

System Maintenance

Just because you cannot taste it, does not mean that it is not there. Contaminants such as Lead, Chromium and Arsenic are undetectable to the taste. Additionally, over time if you do not replace the filter elements, other bad tastes and odors will be apparent in your drinking water.

This is why it is important to change out your filters at the recommended intervals as indicated in this system manual. When replacing the filter elements, pay special attention to any cleaning instructions. Should you have any further questions please refer to our website at www.watts.com or call our customer service department at **1-800-244-1299**.

Operational Parameters



Do not use with water that is microbiologically unsafe or of unknown quality without adequate disinfection before or after the system. System is intended to be installed on the cold water line only.

| | | |
|------------------------------|--|---|
| Operating Temperatures | Maximum 100°F (37.8°C) | Minimum 40°F (4.4°C) |
| Operating Pressure | Maximum 85psi (6.0 kg/cm ²) | Minimum 40psi (2.80 kg/cm ²) |
| pH Parameters | Maximum 11 | Minimum 2 |
| Iron | Maximum 0.2 ppm | |
| TDS (Total Dissolved Solids) | < 1800 ppm | |
| Turbidity | < 5NTU | |

Hardness: Recommended hardness not to exceed 10 grains per gallon, or 170ppm. System will operate with hardness over 10 grains but the membrane life may be shortened. Addition of a water softener may lengthen the membrane life.

Water Pressure: The operating water pressure in your home should be tested over a 24 hour period to attain the maximum pressure. If the incoming water pressure is above 85psi a pressure regulator is recommended, and if over 100psi then a pressure regulator is required.

Copper Tubing: Reverse Osmosis water should not be run through copper tubing as the purity of the water will leach copper causing an objectionable taste in water and pin holes may form in the tubing. Watts supplies speciality filters that can be used if copper tubing follows the Reverse Osmosis unit. Be sure to follow any state or local regulations during installation.

Note: RO unit must be installed a minimum of 25 Pipe feet from water heater.

IMPORTANT NOTICE

System was tested in a laboratory setting utilizing a hot water heater of 40 gallons set at 120°F. Performance may vary if your heater is smaller than 40 gallons or set above 120°F, contact the manufacturer for additional details.

System should not be used on homes equipped with a back-flow prevention on the hot water heater. This device is 100% efficient, as no water is lost to drain in the production of the RO water.

Contents of Reverse Osmosis (RO) System

- 1 Tank
- 1 RO Module
- 1 Parts Bag
- 1 Faucet Bag
- 1 Manual

If any of the items are missing please contact prior to installing.

Tools Recommended for Installation

- 1¼" Hole Saw Bit for Faucet opening
- Round Knockout Punch for Stainless Sinks 1¼"
- Adjustable Wrench
- Sharp Knife
- ½" & ⅝" Open End Wrenches
- Phillips Screw Driver
- Needle Nose Pliers – Adjustable Pliers
- Electric Drill
- ⅛" Drill Bit
- ¼" Drill Bit
- ⅜" Drill Bit



STEP 1

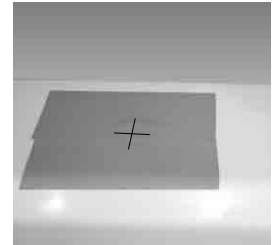
Drill a Hole for the Faucet in a Porcelain Sink

Note: Most sinks are predrilled with 1½" or 1¼" diameter hole that you can use for your RO faucet. (If you are already using it for a sprayer or soap dispenser, see Step 2).

Caution: Porcelain sinks are extremely hard and can crack or chip easily.

Use extreme caution when drilling. Watts accepts no responsibility for damage resulting from the installation of faucet.

Step A – Determine desired location for the RO faucet on your sink and place a piece of masking tape on over where the hole is to be drilled. Mark the center of the hole on the tape.

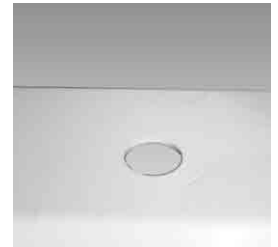


Step B – Using a variable speed drill set on the slowest speed, drill a ⅛" pilot hole through both porcelain and metal casing of sink at the marked center of the desired location. Use lubricating oil or liquid soap to keep the drill bit cool (If drill bit gets hot it may cause the porcelain to crack or chip).



Step C – Using a 1¼" hole saw, proceed to drill the large hole. Keep drill speed on the slowest speed and use lubricating oil or liquid soap to keep the hole saw cool during cutting.

Step D – Make sure the surroundings of the sink are cooled before mounting the faucet to the sink after drilling and remove all sharp edges.



OR

Punch a Hole for the Faucet in a Stainless Steel Sink

Note: If mounting faucet to a Stainless Steel Sink you will need a 1¼" Hole Punch. The faucet opening should be centered between the back splash and the edge of the sink, ideally on the same side as the vertical drain pipe.



Step A – Drill a ¼" pilot hole. Use a ½" Hole Punch and an adjustable wrench to punch the hole in the sink. Change to the 1¼" Hole Punch to enlarge the hole

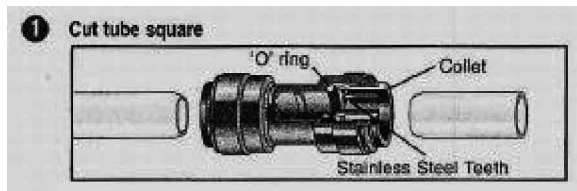


The faucet can now be installed.

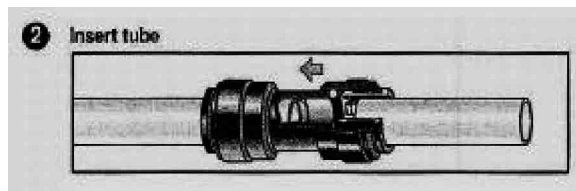
How To Use the Quick-Connect Fittings For Tubing Connections

To make a connection, the tube is simply pushed into the fitting. Place a piece of tape 1/2" from end of tube to indicate how far the tube should be inserted. The unique patented locking system holds the tube firmly in place without deforming it or restricting flow.

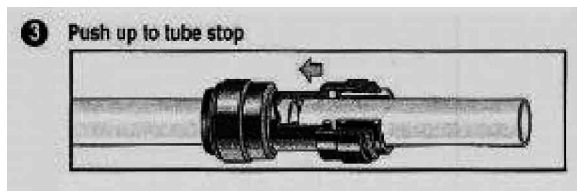
NOTE: These diagrams are just to show how the quick-connect fittings work, your product may not have this exact connector part.



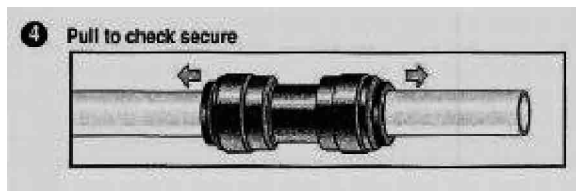
It is essential that the outside diameter be free of score marks and that burrs and sharp edges be removed before inserting into fitting.



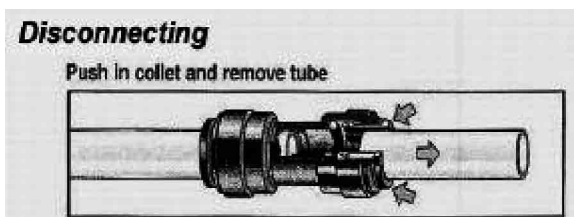
Fitting grips before it seals. Ensure tube is pushed into the tube stop.



Push the tube into the fitting, to the tube stop. The collet (gripper) has stainless steel teeth which hold the tube firmly in position while the O-ring provides a permanent leak proof seal.



Pull on the tube to check that it is secure. It is a good practice to test the system prior to leaving site and /or before use.



To disconnect, ensure the system is depressurized before removing the tube. Push in collect squarely against face of fitting. With the collet held in this position, the tube can be removed. The fitting can then be reused.

STEP 2

Watts Chrome Top Mount Faucet Installation

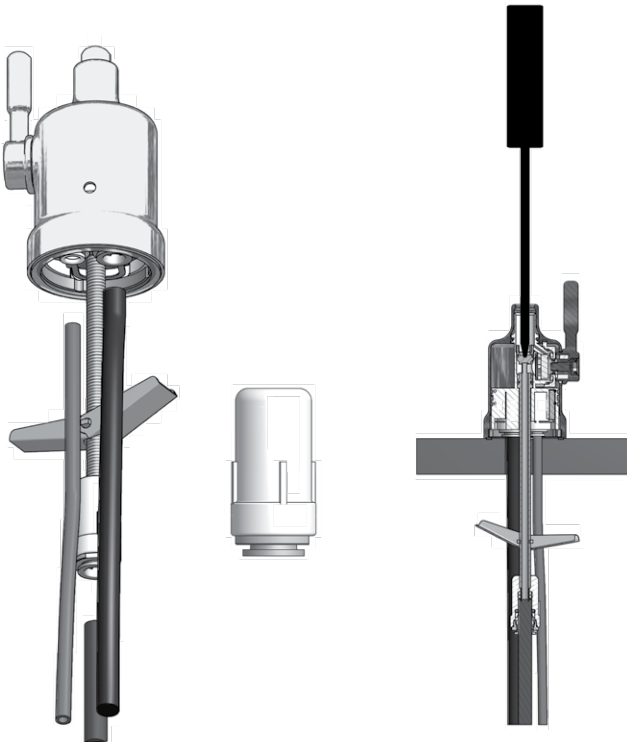
| | MINIMUM | MAXIMUM |
|-----------------------|----------------|---------|
| Mounting Hole Size | 1" | 1 1/4" |
| Torque on Toggle Bolt | 5 lb.in. (max) | |

Gather and identify the faucet pieces.

Step A - Remove faucet base & faucet spout from their respective plastic bags. From above the sink, feed the faucet tubing & toggle bolt down through the 1 1/4" mounting hole in the sink. Ensure that the soft rubber gasket is uniformly positioned in between the base of the faucet and the top of the sink.

Step B - Align the faucet base so that the handle is on the right side and the base is sitting flush on the sink top. Turn the handle down (towards you) to the "ON" position to reveal the tightening screw (located where the spout will be inserted). Using a phillips head screwdriver, turn the screw clockwise until the toggle bolt secures the faucet base snug onto the sink top.

Step C - Once the faucet base is securely fastened to the sink top, insert the faucet spout into the faucet base until it is fully seated. Turn the handle up (away from you) to the "OFF" position.

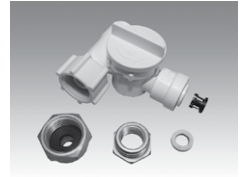


STEP 3

Adapt-A-Valve™ Installation

Verify contents prior to installation:

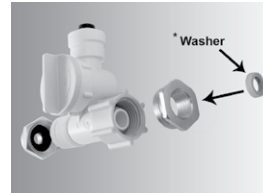
- (1) - Plastic Adapt-a-Valve™ & Black Collet
- (1) - Brass Adapter no washer
- (1) - Brass Adapter with black washer
- (1) - White rubber washer



Water supply line to the system must be from the cold water supply line only. Hot water will severely damage your system.

WARNING: Do not use Teflon tape with the Adapt-A-Valve™.

For 3/8" Configuration



(With Brass Fittings)

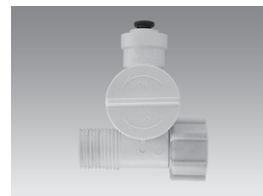
* Insert White Washer



Hot
Supply

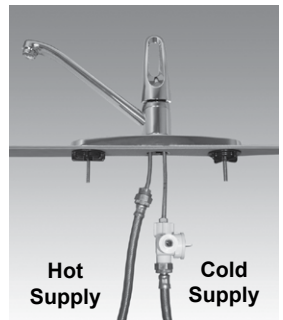
Cold
Supply

For 1/2" Configuration



(Without Brass Fittings)

1/2" Configuration



Hot
Supply

Cold
Supply

Step A - Turn off the cold water supply to the faucet by turning the angle stop valve completely off.

Step B - Open cold water sink faucet to relieve pressure.

Step C - Choosing the configuration that fits your plumbing, attach the Adapt-A-Valve™ as illustrated in the four photos above.

STEP 4

Reverse Osmosis Module Mounting

Step A - Determine best location for the RO module to be mounted to allow for future system maintenance. The parts bag has 2 self tapping screws. Using an electric drill with a Phillips bit, screw them into the cabinet wall 6" apart and 16" from the bottom of the cabinet.



Note: Do not cut any RO system tubes at this time

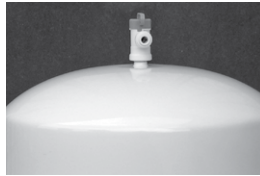
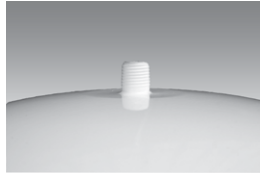
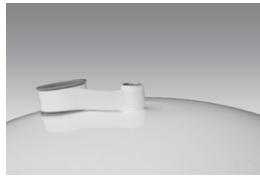
STEP 5

Tank Ball Valve Installation

Step A – Teflon tape must be applied in a clockwise direction. Wrap (4 to 8 turns) around the male pipe threads (MPT) on the stainless steel fitting on top of the tank.

Step B – Thread the Quick-Connect ball valve (supplied in the parts bag) onto the stainless steel connector on the tank.

Caution: Do not Teflon tape the plastic elbow threads as this may cause leaks.



STEP 6

Blue Tube Connection (From The RO Module To TANK)

Step A – Position tank in desired location. Stand it upright or lay it on its side (using the black plastic stand). Measure the blue tube (marked “TANK”) from the RO module over to the tank and cut it to length leaving a straight edge on the end of the tube. Then insert the tube into the quick-connect fitting on the tank ball valve. Make sure the tube is pushed in all the way to the tube stop (see Page 4 for quick-connect fitting use directions).



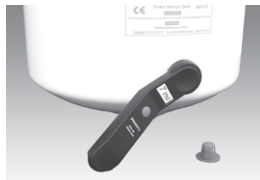
STEP 7

Check Air Pressure in the Tank

Note: Check air pressure when tank is empty of water!

Check air pressure in the storage tank when you notice a decrease in available water from the RO system. Air can be added with a bicycle pump using the schrader valve that is located on the lower side of the tank behind the blue plastic cap.

Step A – Turn off the incoming water supply to the RO by turning the knob on the Adapt-A-Valve™ clockwise until it stops. (Follow the green tube away from the RO system to find the Adapt-A-Valve™.)



Step B – Open the RO Faucet and allow water to drain from the tank until it is completely empty.

Tip: When water from the RO faucet slows to a trickle, with the faucet still in the open position, you may add air to the tank to purge any left over water, this will ensure that the tank is completely empty.

Step C – Once all water in the tank is purged, check air pressure using an air pressure gauge, it should read between 5 - 7psi. (Digital air pressure gauge is recommended)

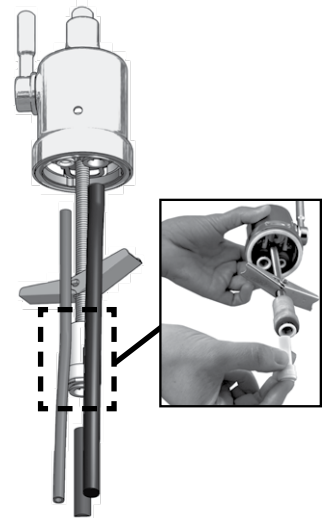
Step D – Follow startup procedure on Page 6.

STEP 8

Blue Tube Connection (From The RO Module To FAUCET)

Step A – In the parts bag locate the 3/8" stem X 1/4" quick-connect fitting adapter. Insert the stem adapter into the 3/8" open quick-connect fitting that is on the end of the top mount faucet toggle bolt.

Step B – Insert the 1/4" blue tube (marked “FAUCET”) from the RO Module into the 1/4" quick-connect end of the 3/8" stem X 1/4" quick-connect fitting adapter that was previously installed above in the top mount faucet. Make sure the tube is pushed in all the way to the tube stop.



Start Up Instructions

Warning: To prevent the possibility of electrical shock, clean up any water on cabinet floor and dry all water from outside of RO unit.

Step A – Turn on the incoming cold and hot water at the angle stop valves by turning the knob on the Adapt-A-Valve™ counterclockwise. Check the system for leaks and tighten any fittings as necessary. (Check frequently over the next 24 hours to ensure no leaks are present).

Note: If you have connected your RO system to a refrigerator / ice maker, make sure the ice maker is off (do not allow water to flow to the ice maker) until flushing is complete and the tank has been allowed to fill completely. Connection from the RO to the ice maker system should have an in-line valve installed before the ice maker so it can easily be closed to prevent water flowing to the ice maker during start up and periodic maintenance. Your RO tank must be allowed to fill up fully in order for the ice maker system to work properly.

Step B – Plug the 24 volt transformer power cord connector into the RO wire harness connector (labeled Transformer).

Step C – Plug the transformer into the electrical outlet under the sink.

Step D – Open the RO faucet and leave it open until water begins to trickle out (it will come out slowly).

Step E – After water trickles out of the faucet, close the RO faucet allowing the storage tank to fill with water. It may take 4 to 6 hours to fill the tank completely depending on the production capability of the membrane, local water temperature and water pressure.

Note: Ensure Ball Valve on the RO storage tank is open.

Note: During the fill period you may hear water trickling due to the Reverse Osmosis Process.

Step F – After the Tank has filled, open the RO Faucet to flush the tank completely to remove carbon particles from final filter. You will know that the tank is empty when the flow rate from the RO faucet is down to a trickle. Repeat this step two more times. The fourth tank can be used for drinking.

Note: Flushing of the tank 3 times is only necessary during the initial startup and after replacing the membrane.

Important: Your reverse osmosis system contains replaceable treatment components that are critical for effective containment reduction. Periodic inspection and following proper system maintenance is critical for continued performance.

6-Month System Maintenance

Order filter by calling Watts at 1-800-224-1299

Item Needed: EDP# 7100109

Includes:

- (1) Carbon Block Filter

This reverse osmosis system contains a replaceable component (the RO membrane) which is critical to the efficiency of the system. Replacement of this reverse osmosis membrane should be with one of identical specifications as defined by Watts to assure the same efficiency and contaminant reduction performance.

Note: Your RO module is equipped with valved heads which will automatically turn off the water supply to each filter when the filter is released, thus you do not need to turn off the incoming water supply at the Adapt-A-Valve™. The faucet must be off when filter is replaced.

Step A – Place the towel under the RO module to catch any excess water that drips out from the filters during the changeover.

Step B – To make the removal of the filter housings easier, the heads & housings may be lifted up to 90 degrees as shown in the pictures to the right. Starting with cartridge closest to the pump. Change only the carbon block filter, lift the cartridge up to 90 degrees. Rotate the cartridge a ¼ turn counterclockwise, remove and dispose of used cartridge.



Step C – Make sure to remove the cap off of the new replacement filter. Insert the new filter cartridge into the head and rotate it clockwise ¼ turn until it stops. Return cartridge to the vertical position.



Step D – When finished flush your tank completely once to remove any natural carbon fines from the RO system. Check over the next 24 hours to ensure no leaks are present.



Photographs for reference purposes only for Kwik-Change™ drinking water systems. Your system may contain 2, 3, or 4 filter cartridges.



Annual Maintenance

Order filter by calling Watts at 1-800-224-1299

Item Needed: # 7100119

Includes:

- (1) Carbon Block Filters
- (1) Membrane
- (1) Post GAC

Note: Your RO module is equipped with valved heads which will automatically turn off the water supply to each filter when the filter is released, thus you do not need to turn off the incoming water supply at the Adapt-A-Valve™. The faucet must be off when filters are replaced.

Step A – Place the towel under the RO module to catch any excess water that drips out from the filters during the changeover.

Step B – Start with Carbon Block Filter (closest to pump). Lift the cartridge to make the removal of the filter housings easier, the heads & housings may be lifted up to 90 degrees as shown in the pictures to the right. Starting with the sediment filter, lift the cartridge up to 90 degrees. Rotate the cartridge a ¼ turn counterclockwise, remove and dispose of used cartridge.



Step C – Make sure to remove the cap off of the new replacement filter. Insert the new filter cartridge into the head and rotate it clockwise ¼ turn until it stops. Return cartridge to the vertical position.



Step D – Repeat this procedure for the 2nd and 3rd filter cartridges. When finished flush your tank completely once to remove any natural carbon fines from the RO system. Check over the next 24 hours to ensure no leaks are present.



Photographs for reference purposes only for Kwik-Change™ drinking water systems. Your system may contain 2, 3, or 4 filter cartridges.

Membrane Replacement

This reverse osmosis system contains a replaceable component (the RO membrane) which is critical to the efficiency of the system.

Replacement of this reverse osmosis membrane should be with one of identical specifications as defined by Watts to assure the same efficiency and contaminant reduction performance.

Membranes have a life expectancy between 2 and 5 years, depending on the incoming water conditions and the amount the RO system is used. This reverse osmosis membrane is critical for effective reduction of total dissolved solids (TDS). The product water should be tested periodically to verify that the system is performing satisfactorily.

Normally, a membrane would be replaced during a semiannual or annual filter change. However, if at any time you notice a reduction in water production or an unpleasant taste in the reverse osmosis water, it could be time to replace the membrane. Watts recommends replacing the membrane when TDS reduction falls below 75%.

Note: A water sample may be sent to Watts for a free diagnosis of your membrane performance. To send a water sample, use two (2) clean containers and fill ½ cup of tap water in one container and ½ cup of reverse osmosis water in 2nd container. Clearly label each sample. Send the samples to the address listed on the cover of this manual attention "Water Samples". Watts will test the water and mail or call you with the results.

See annual maintenance on Page 7.

Step A – To change your membrane follow the instructions for the Annual Maintenance (previous section). The procedure to remove and change the membrane cartridge is the same as all the other filter cartridges on the RO module.

Step B – Check over the next 24 hours to ensure no leaks are present.

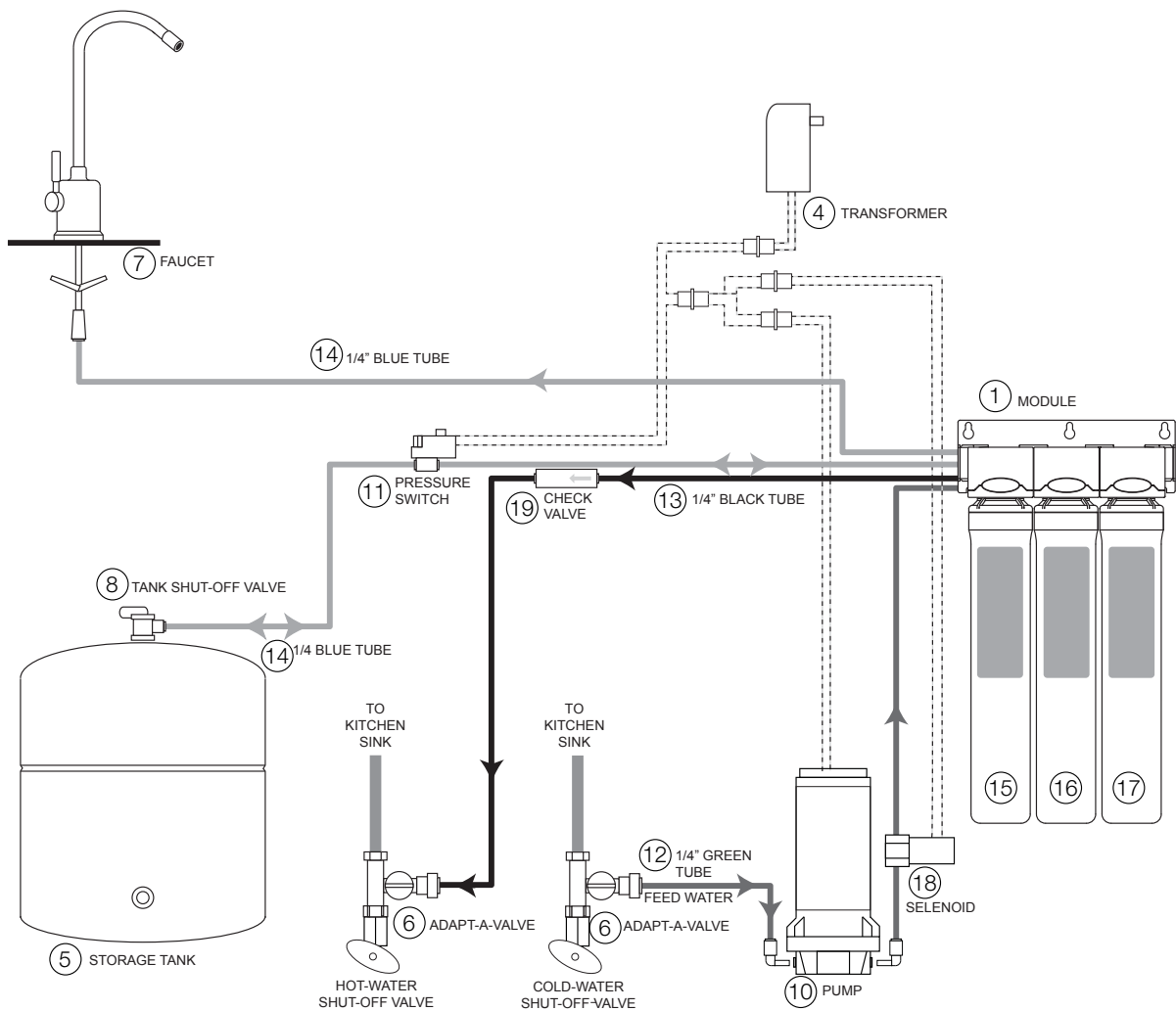
Replacement Filter Packs

| MODEL | FREQUENCY | DESCRIPTION |
|-----------|-----------|----------------------|
| PWKCCB13 | 6 months | Carbon Block |
| PWFPKCCZW | Annual | Membrane and filters |
| PWKCGAC13 | Annual | GAC filter |
| PWMEMKC60 | 2-5 years | 60 GPD membrane |

Parts List

The reverse osmosis system contains a replaceable treatment component, critical for the effective reduction of total dissolved solids and that the product water shall be tested periodically to verify that the system is performing properly

| ITEM # | EDP # | DESCRIPTION |
|--------|---------|---|
| 1 | 7300052 | MODULE |
| 2 | 7300034 | ELBOW - 1/4" QC X 1/4" STEM (NOT SHOWN) |
| 3 | 7300025 | FLOW RESTRICTOR (NOT SHOWN) |
| 4 | 7300000 | TRANSFORMER |
| 5 | 7100174 | STORAGE TANK - 3 GAL WHITE |
| 6 | 7300068 | ADAPT-A-VALVE™ |
| 7 | 7100203 | TOP MOUNT FAUCET - CHROME |
| 8 | 7300073 | TANK SHUT-OFF VALVE |
| 9 | 7300028 | ADAPTER - 3/8" STEM X 1/4" QC (NOT SHOWN) |
| 10 | 7300001 | BOOSTER PUMP - 1/4" QC |
| 11 | 7300015 | PRESSURE SWITCH |
| 12 | 7300066 | 1/4" GREEN TUBING |
| 13 | 7300064 | 1/4" BLACK TUBING |
| 14 | 7300065 | 1/4" BLUE TUBING |
| 15 | 7100109 | CARBON FILTER |
| 16 | 7100125 | REVERSE OSMOSIS MEMBRANE |
| 17 | 7100462 | POST CARBON FILTER |
| 18 | 7300076 | SOLENOID VALVE |
| 19 | 7300075 | DOUBLE-CHECK VALVE |



Troubleshooting

| PROBLEM | CAUSE | SOLUTION |
|---|----------------------------|---|
| 1. Low/Slow Production | Low Water Pressure | Assure a minimum of 40psi incoming water pressure. Watts sells a booster pump if home water pressure is low. Make sure water supply is turned on and Adapt-A-Valve™ is all the way open. |
| | Crimps in tubing | Check tubing and straighten or replace as necessary. |
| | Clogged pre-filters | Replace pre-filters. |
| | Fouled membrane | Replace membrane and flow restrictor. |
| 2. Milky colored Water | Air in system | Air in the system is a normal occurrence with initial start up of the RO system. This milky look will disappear during normal use within 1-2 weeks. If condition reoccurs after filter change, drain tank 1 to 2 times. |
| 3. Water constantly running, unit will not shut off | Low water pressure | See #1 Above |
| | Crimp in supply tube | Check tubing and straighten or repair as necessary. |
| 4. Noise / Water from faucet vent hole or noise from in drain line drain. | Crimp or restriction | Check tubing and straighten or repair as necessary. Straighten all drain lines. Clear blockage. Cut off any Excess tubing |
| | Drain tube clogged | Caused from dishwasher or garbage disposal. Disconnect the 3/8" black line at the drain, clean the 3/8" black line out with a wire, then reconnect. Blowing air through the line will not always remove the clog. |
| 5. Small amount of water in storage tank | System starting up | Normally it takes 4-6 hours to fill tank. Note: low incoming water pressure and/or temperature can drastically reduce production rate. |
| | Low water pressure | See #1 above. |
| | To much air in tank | Tank air pressure should be 5-7psi when empty of water. If below 5psi, add air or bleed if above 7psi. Check only when tank is empty of water. See previous page. |
| 6. Water leaks from the filter membrane housing | Not properly tightened | Re-insert the filter / membrane housing. |
| 7. Low water flow from faucet | Check air pressure in tank | Use a Digital Air Gauge for best results. The empty tank pressure should be 5-7 psi. To reset the air pressure in the tank, turn off water supply and drain tank by opening faucet. When water stops flowing out of the faucet. Remove schrader valve cover pump air into tank until water stops flowing from the faucet. Release the air out of the schrader valve until you reach 5-7 psi. Replace schrader valve cover. Turn on Water. |

Arsenic Facts

Arsenic (As) is a naturally occurring contaminant found in many ground waters. Arsenic in water has no color, taste or odor. It must be measured by an arsenic test kit or lab test.

Public water utilities must have their water tested for arsenic. You can obtain the results from your water utility contained within your consumer confidence report. If you have your own well, you will need to have the water evaluated. The local health department or the state environmental health agency can provide a list of test kits or certified labs.

There are two forms of arsenic: pentavalent arsenic (also called As (V), As (+5)) and trivalent arsenic (also called As (III), As (+3)). In well water, arsenic may be pentavalent, trivalent, or a combination of both. Although both forms of arsenic are potentially hazardous to your health, trivalent arsenic is considered more harmful than pentavalent arsenic.

RO systems are very effective at removing pentavalent arsenic. A free chlorine residual will rapidly convert trivalent arsenic to pentavalent arsenic. Other water treatment chemicals such as ozone and potassium permanganate will also change trivalent arsenic to pentavalent arsenic. A combined chlorine residual (also called chloramine) where it does convert trivalent arsenic to pentavalent arsenic, may not convert all the trivalent arsenic into pentavalent arsenic. If you get your water from a public water utility, contact the utility to find out if free chlorine or combined chlorine is used in the water system.

This Watts reverse osmosis system is designed to remove up to 98% of pentavalent arsenic. It will not convert trivalent arsenic to pentavalent arsenic. Under laboratory standard testing conditions, this system reduced 0.30 mg/L (ppm) pentavalent arsenic to under 0.010 mg/L (ppm) (the USEPA standard for drinking water). Actual performance of the system may vary depending on specific water quality conditions at the consumer's installation. In addition to the independent laboratory standard testing conditions Watts has conducted additional field testing on our reverse osmosis units to determine trivalent arsenic reduction capabilities. Based upon Watts field testing, it has been determined that the RO units are capable of reducing up to 67% of trivalent arsenic from the drinking water.

The RO membrane component of this Watts reverse osmosis system must be maintained according to its recommended maintenance cycle. Specific component identification and ordering information can be found in the installation/operation manual maintenance section, by phone at 1-800-224-1299 or online www.watts.com

CALIFORNIA PROPOSITION 65 WARNING

WARNING: This product contains chemicals known to the State of California to cause cancer and birth defects or other reproductive harm. (California law requires this warning to be given to customers in the State of California.)

For more information: www.watts.com/prop65

LIMITED WARRANTY: Certain Watts Pure Water products come with a limited warranty from Watts Regulator Co. Other products may have no warranty or are covered by the original manufacturer's warranty only. For specific product warranty information, please visit www.watts.com or the published literature that comes with your product. Any remedies stated in such warranties are exclusive and are the only remedies for breach of warranty. **EXCEPT FOR THE APPLICABLE PRODUCT WARRANTY, IF ANY, WATTS MAKES NO OTHER WARRANTIES, EXPRESS OR IMPLIED. TO THE FULLEST EXTENT PERMITTED BY APPLICABLE LAW, WATTS HEREBY SPECIFICALLY DISCLAIMS ALL OTHER WARRANTIES, EXPRESS OR IMPLIED, INCLUDING BUT NOT LIMITED TO THE IMPLIED WARRANTIES OF MERCHANTABILITY AND FITNESS FOR A PARTICULAR PURPOSE, AND IN NO EVENT SHALL WATTS BE LIABLE, IN CONTRACT, TORT, STRICT LIABILITY OR UNDER ANY OTHER LEGAL THEORY, FOR INCIDENTAL, INDIRECT, SPECIAL OR CONSEQUENTIAL DAMAGES, INCLUDING, WITHOUT LIMITATION, LOST PROFITS OR PROPERTY DAMAGE, REGARDLESS OF WHETHER IT WAS INFORMED ABOUT THE POSSIBILITY OF SUCH DAMAGES.**



A Watts Water Technologies Company

USA: Tel. (800) 224-1299 • www.watts.com

Canada: Tel. (888) 208-8927 • www.watts.ca