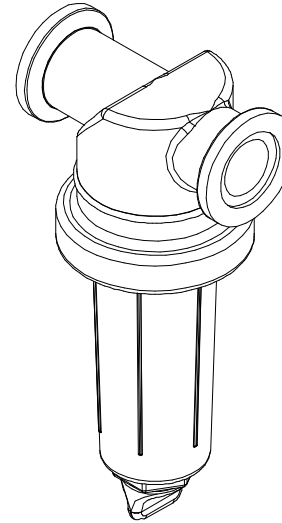
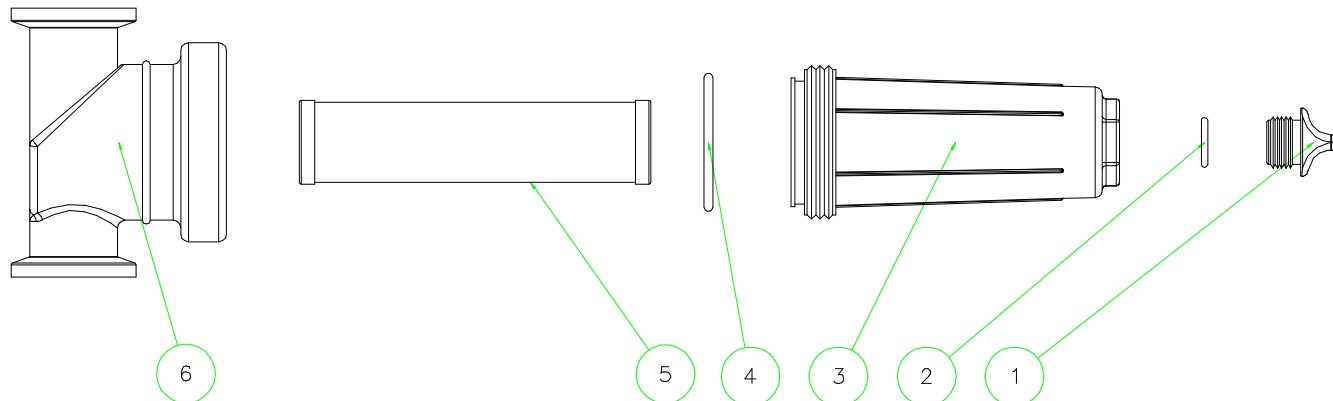



*NOTE:
ADDITIONAL CLEARANCE REQ'D
FOR SCREEN REMOVAL: 5 3/4"



Parts List			
Item	Qty	Part No.	Description
1	1	12777	DRAIN PLUG
2	1	UV15163	PLUG O-RING
3	1	LST100B	"T" STRAINER BODY
4	1	LST100G	BODY O-RING EPDM
5	1	LST1100	T STRAINER SCREEN
6	1	MLST100H	T Strainer Head





BANJO CORPORATION
150 BANJO DR. • CRAWFORDSVILLE, IN 47933

PART NO. **MLST100-100**

TITLE **"T" STRAINER ASSEMBLY W/ #100 MESH SCREEN**

THIS DRAWING AND ALL INFORMATION
CONTAINED THEREIN ARE THE EXCLUSIVE
PROPERTY OF BANJO CORPORATION.
UNLESS SPECIFICALLY NOTED, THIS
DRAWING AND ITEMS SHOWN ON THIS
DRAWING ARE SUBJECT TO CHANGE
AT ANY TIME.