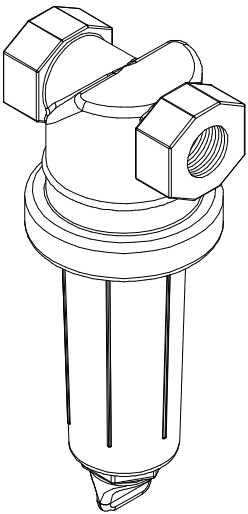
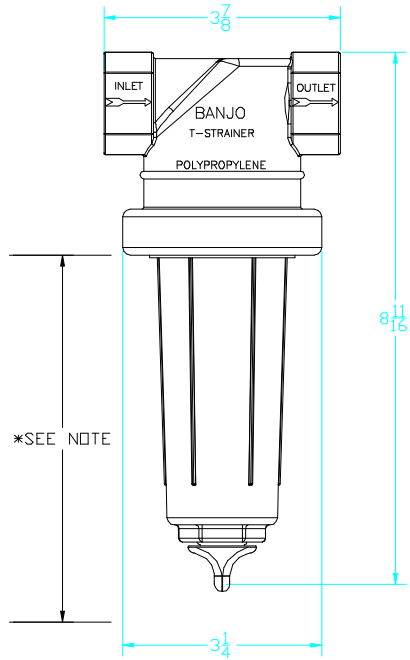
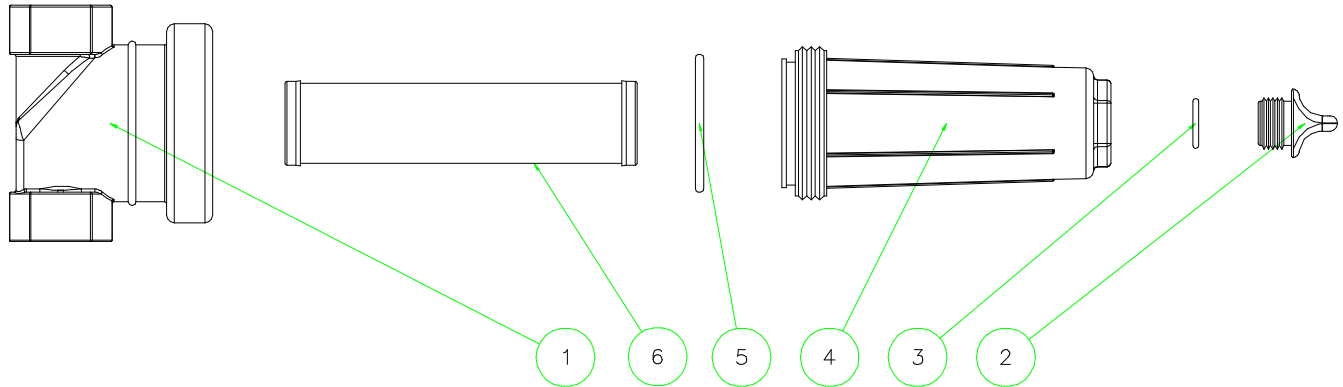


\*NOTE:  
ADDITIONAL CLEARANCE REQ'D  
FOR SCREEN REMOVAL: 5 3/4"



Parts List			
Item	Qty	Part No.	Description
1	1	LST075H	"T" STRAINER HEAD
2	1	12777	DRAIN PLUG
3	1	UV15163	PLUG O-RING
4	1	LST100B	"T" STRAINER BODY
5	1	LST100G	BODY O-RING EPDM
6	1	LST130	T STRAINER SCREEN



BANJO CORPORATION  
150 BANJO DR. \* CRAWFORDSVILLE, IN 47933

PART NO. LST075-30

TITLE "T" STRAINER ASSEMBLY W/ #30 MESH SCREEN

THIS DRAWING AND ALL INFORMATION  
CONTAINED THEREIN ARE THE EXCLUSIVE  
PROPERTY OF BANJO CORPORATION.  
UNLESS SPECIFICALLY NOTED, THIS  
DRAWING AND ITEMS SHOWN ON THIS  
DRAWING ARE SUBJECT TO CHANGE  
AT ANY TIME.