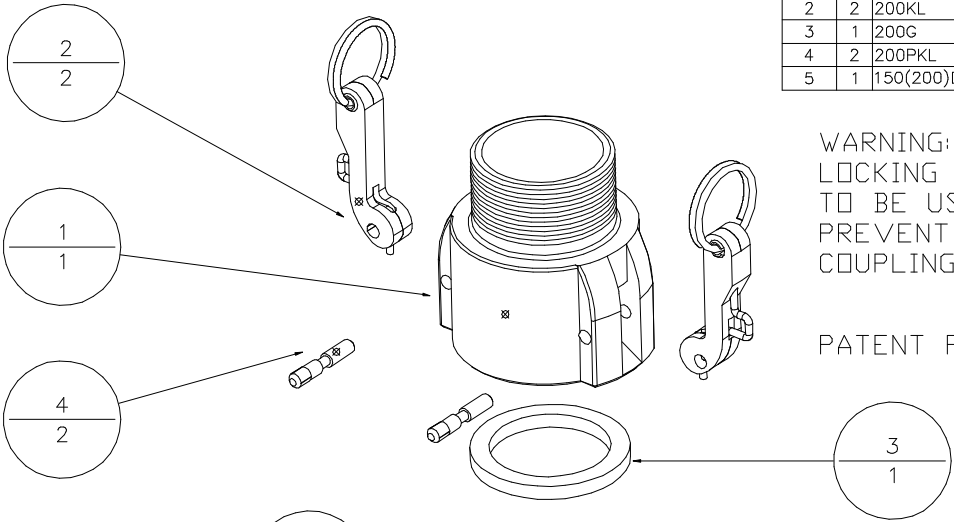
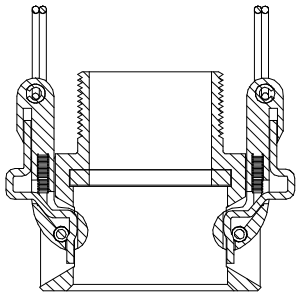


Parts list				
Item	Cn.	Description	Note	Material
1	1	200XMB	UNASSMBLD "B" CPLG	POLYPROPYLENE
2	2	200KL	LOCKING CAM ARM ASSEMBLY	316SS
3	1	200G	COUPLING GASKET	EPDM
4	2	200PKL	LOCKING CAM ARM PIN	316SS
5	1	150(200)D	DECAL	

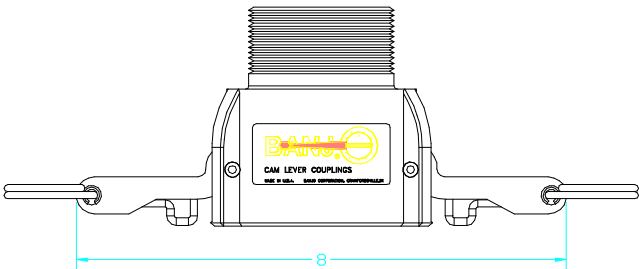
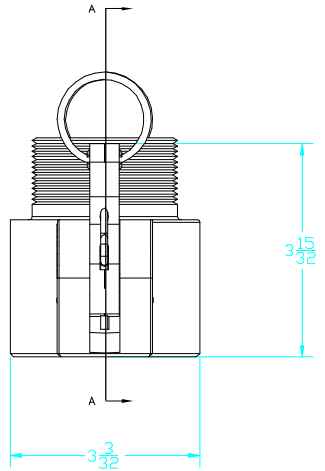
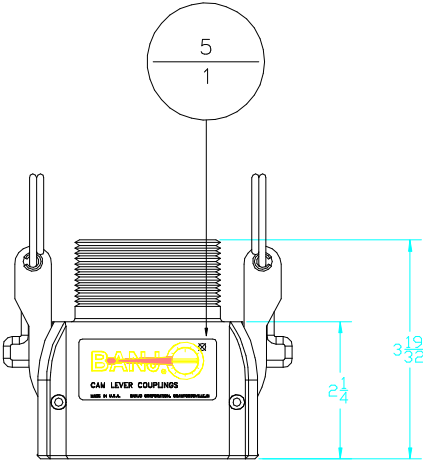


WARNING:
LOCKING CAM ARM LEVER IS NOT INTENDED
TO BE USED AS A SECURITY DEVICE OR TO
PREVENT UNAUTHORIZED OPENING OF
COUPLING ASSEMBLY

PATENT PENDING



SECTION A-A



BANJO CORPORATION
150 BANJO DR. * CRAWFORDSVILLE, IN 47933

PART NO. L200B

TITLE
2" Female Cplg x 2" MPT w/ Locking Arms

THIS DRAWING AND ALL INFORMATION
CONTAINED THEREIN ARE THE EXCLUSIVE
PROPERTY OF BANJO CORPORATION.
UNLESS SPECIFICALLY NOTED, THIS
DRAWING AND ITEMS SHOWN ON THIS
DRAWING ARE SUBJECT TO CHANGE
AT ANY TIME.