

EMT • Electrical Metallic Tubing and True Color™ EMT

E-Z Pull™ EMT

- Hot galvanized steel using patented inline Flo-Coat™ process for long lasting exterior protection
- E-Z Pull interior coating provides a smooth raceway for fast wire-pulling
- Excellent mechanical protection for conductors
- Ductility for faster and easier bending
- Superb EMI shielding characteristics
- Trade sizes 1/2 thru 4

Quality Electrical Metallic Tubing



True Color™ EMT

- All the benefits of E-Z Pull EMT
- Instant identification of multiple circuits
- Fire Alarm™ Red EMT
- Healthcare Green EMT
- Data Com Blue EMT
- Available in 8 colors
- Trade sizes 1/2 thru 4

Identify Important Circuits Instantly!

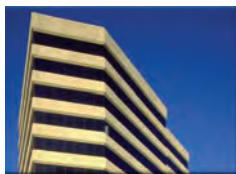


True Color™ Applications



Black EMT

- Blends in dark colored areas
- Open architecture



Fire Alarm™ EMT

- Emergency circuits
- Fire alarm and Security systems



Orange EMT

- Construction/ research areas
- Fiber optic systems
- Auto repair/ maintenance



Yellow EMT

- High voltage wiring
- Caution areas
- Special equipment



Green EMT

- Hospital and healthcare areas
- Nurse call stations
- Critical circuits



Blue EMT

- Low voltage wiring
- Data com/video
- Network security



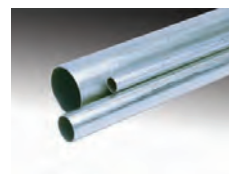
Purple EMT

- Specialty wiring systems
- Security systems



White EMT

- Blends in light colored areas
- Open architecture



Silver EMT

- Standard Use
- Contemporary architecture

Project Information

Company Name: _____

Address: _____

City: _____

State & Zip: _____

Phone: _____

Project Name: _____

City: _____

State: _____

NOTE: Special orders are non-cancelable, non-returnable and non-refundable.

EMT • Electrical Metallic Tubing and True Color™ EMT

FEATURES & SPECIFICATIONS

Manufactured for Long Life

Allied EMT is precision manufactured from high grade mild strip steel for exceptional durability and long-lasting life. Allied EMT is hot galvanized using Allied's patented in-line Flo-Coat™ process. This process combines zinc, a conversion coating, and a clear organic polymer top-coat to form a triple layer of protection against corrosion and abrasion.

E-Z Pull™ EMT combines strength with ductility, providing easy bending, cutting and joining while resisting flattening, kinking and splitting. Available in trade sizes 1/2 – 4.

Coatings

Allied Tube & Conduit's standard EMT (Electrical Metallic Tubing) has a special low friction ID coating called E-Z Pull that greatly improves the slip properties between conduit and wire. With E-Z Pull EMT, wire pulls through the EMT smoothly and easily, making installation easier and faster.

EMI Shielding

Allied EMT is very effective in reducing electromagnetic field levels for encased power distribution circuits, shielding computers and other sensitive electronic equipment from the effects of electromagnetic interference. For more information on EMT shielding, visit www.alliedeg.com to obtain the **GEMI** (Grounding and Electro-Magnetic Interference) software analysis program.

Codes & Standards Compliance

Allied EMT is listed to Underwriters Laboratories Safety Standard UL 797 and meets ANSI C80.3. These standards have been adopted as federal specifications in lieu of WWC 563. EMT is recognized as an equipment grounding conductor by NEC Section 250-118. Documentation for compliance with NEC Article 250 is also available in the **GEMI** (Grounding and Electro-Magnetic Interference) analysis software and related research studies found at the www.alliedeg.com website.



Installation of EMT shall be in accordance with the National Electrical Code and the UL listing information. Allied EMT is listed in category FJMX. Master bundles conform to NEMA Standard RN2.

Specification Data

To specify Allied EMT, include the following: Electrical Metallic Tubing shall be equal to that manufactured by Allied Tube & Conduit Corporation. EMT shall be hot galvanized steel O.D. with an organic corrosion resistant I.D. coating, and shall be listed to UL Safety Standard 797 and manufactured in accordance with ANSI C80.3.

Electrical Metallic Tubing Weights and Dimensions

Trade Size	Metric Designator	Approx. Wt. Per 100 Ft. (30.5M)		Outside Diameter ¹		Nominal Wall Thickness		Red and Galvanized Master Bundle Qty.		All Other Colors** Master Bundle Qty.	
		lb.	kg.	in.	mm.	in.	mm.	ft.	m.	ft.	m.
1/2	16	30	13.6	0.706	17.9	0.042	1.07	7000	2135	3500	1067.5
3/4	21	46	20.9	0.922	23.4	0.049	1.25	5000	1525	2500	762.5
1	27	67	30.4	1.163	29.5	0.057	1.45	3000	915	1500*	457.5
1-1/4	35	101	45.8	1.510	38.4	0.065	1.65	2000	610	2000	610.0
1-1/2	41	116	52.6	1.740	44.2	0.065	1.65	1500	457.5	1500	457.5
2	53	148	67.1	2.197	55.8	0.065	1.65	1200	366.0	1200	366.0
2-1/2	63	216	98.0	2.875	73.0	0.072	1.83	610	186.1	610	186.1
3	78	263	119.3	3.500	88.9	0.072	1.83	510	155.6	510	155.6
3-1/2	91	349	158.3	4.000	101.6	0.083	2.11	370	112.9	370	112.9
4	103	393	178.2	4.500	114.3	0.083	2.11	300	91.5	300	91.5

¹Outside diameter tolerances: +/- .005 in. (.13mm) for trade sizes 1/2 (16mm) through 2 (53mm);

+/- .010 in. (.25mm) for trade sizes 2-1/2 (63mm);

+/- .015 in. (.38mm) for trade size 3 (78mm);

+/- .020 in. (.51mm) for trade sizes 3-1/2 (91mm) and 4 (103mm).

NOTE: Length = 10 ft. (3.05m) with a tolerance of +/- .25 in. (6.35 mm)

*Blue trade size 1 master bundle size: 3000 ft / 915 m

** Other Color Trade Sizes 2 - 4 are available thru special order