

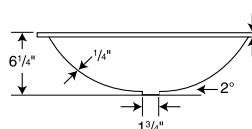
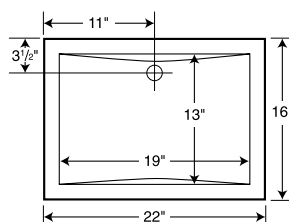
Manufactured from Swanstone solid surface
 (see page 2 for detailed information)

Recommended for high use traffic areas and commercial surfaces

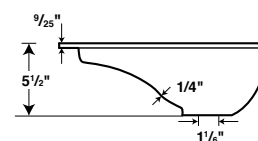
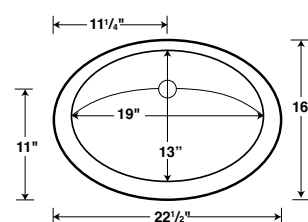
WARRANTY
 Limited Lifetime – Residential
 Limited 25-year – Commercial

FEATURES

- Reinforced solid surface means color and texture run all the way through and cannot wear away
- Renewable surface will not wear away
- Coordinates with Swanstone shower and bath systems
- Chemical resistant—acetone will not harm
- Make-up and hair-dye can be buffed out with household cleansers
- Heat, stain and scratch resistant for lasting beauty
- Undermount style bowl installs into any countertop, including solid surface, tile and laminate



UC-1913
 Contour Undermount



ULAD-1913
 Undermount

Sloped bowl of ULAD-1913 meets requirements for ADA clearance

SPECIFICATIONS

Undermount Vanity Bowls

Model	Part	Dimensions	Ship Wt. Lb.	Ship FedEx	Carton Dims. In.	Cu. Ft.
UC-1913	UC01913	13" D x 19" W	14	FedEx	25 x 21 x 8	2.43
ULAD-1913	ULAD01913	13" D x 19" W	10	FedEx	22 1/2 x 21 x 8 3/4	2.25

Kit Includes: One compression molded vanity bowl plus complete installation instructions.

Packaging: Each Swanstone unit is packed in a rectangular carton.

Note: ULAD-1913 meets the dimensional requirements to allow for installation in ADA applications. For up-to-date ADA regulations, visit www.ADA.gov.

STANDARDS AND RATINGS

Class 1A fire rating

American National Standard Institute—ANSI Z124.3

International Association of Plumbing and Mechanical Officials (IAPMO)—listed

cUPC listed—Certified to CSA Standard B45 by IAPMO

National Sanitation Foundation-NSF Splash Zone, -NSF Food Zone

American Society for Testing and Materials

National Electrical Manufacturers Association

For a complete list of tests and results see the Technical Data Sheet – page 135.

SUPPORT DOCUMENTS

Installation instructions available on line at www.swanstone.com

 **MADE IN USA.**

COLORS

(See inside back cover for color sample.)

- White (010)
- Bone (037)
- Bisque (018)
- Almond Galaxy (046)
- Arctic Granite (035)
- Barley (091)
- Bermuda Sand (040)
- Gray Granite (042)
- Green Pasture (095)
- Sierra (094)
- Tahiti Blue (056)
- Tahiti Desert (050)
- Tahiti Evergreen (057)
- Tahiti Gray (053)
- Tahiti Ivory (059)
- Tahiti Matrix (058)
- Tahiti Rose (052)
- Tahiti Sand (051)
- Tahiti Terra (055)
- Tahiti White (011)
- Cornflower (063)
- Ironweed (061)
- Night Sky (012)
- Purple Sage (064)
- Wild Indigo (022)
- Winter Wheat (060)
- Indian Grass (071)
- Pebble (072)
- Seafoam (074)
- Glacier (121)
- Prairie (122)
- Acorn (123)
- Canyon (124)
- Cloud White (125)
- Cloud Bone (126)
- Baby's Breath (168)
- Caraway Seed (169)

MAINTENANCE AND CLEANING INFORMATION

Cleaning regularly with liquid cleansers such as Dow or Lysol foaming bubbles is recommended. If necessary, Ajax, Comet, Soft Scrub, Bon Ami, Barkeeper's Friend and similar abrasive cleaners are safe and effective for use with a Scotch-Brite, Mr. Clean Magic Eraser or other similar pads and sponges. Lime-Away, Rust Out, Whink or other similar mineral-stain removers are acceptable as well. **Do not** use SOS, Brillo or other metal scouring pads.