



Cert. No. LRQ 0963008

ISO 9001

# spirax/sarco

TI-P068-18  
ST Issue 3

## TD52M, TD52MLC, TD52MA and TD52MLCA Thermodynamic Steam Traps

### Description

The **TD52M** is a maintainable thermodynamic steam trap manufactured in stainless steel specifically designed for relatively small condensate loads, such as steam mains drainage. For very low condensate loads, a low capacity version is available. This version is designated by the letters LC e.g.: **TD52MLC**. For those applications where the release of air is a concern an anti-air-binding disc is available. This version is designated by the letter A, e.g.: **TD52MA** and **TD52MLCA**.

### Optional extra

An **insulating cover** is available to prevent the trap being unduly influenced by excessive heat loss such as when subjected to low outside temperatures, wind, rain etc. **Not available for the 1" size.**

### Standards

These products fully comply with the requirements of the European Pressure Equipment Directive 97/23/EC.

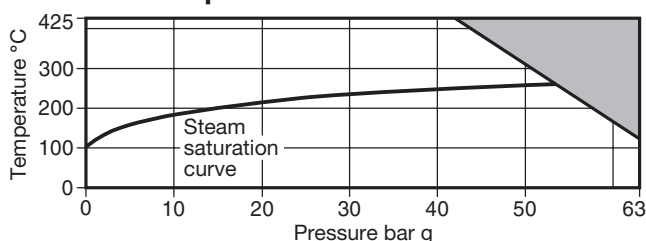
### Certification

These products are available with certification to EN 10204 3.1. **Note:** All certification/inspection requirements must be stated at the time of order placement.

### Sizes and pipe connections

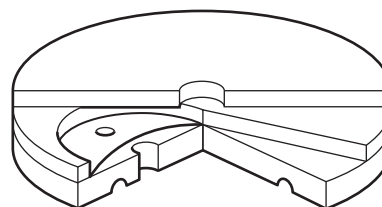
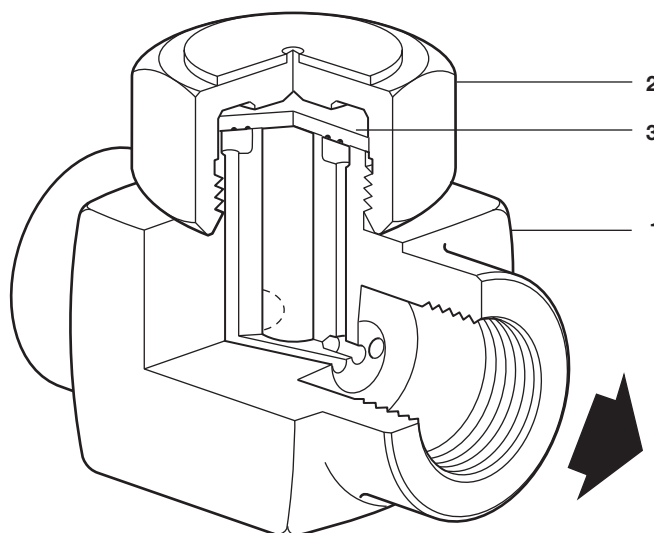
	<b>TD52M</b>	1/4" 3/8", 1/2", 3/4" and 1"
Screwed BSP or NPT	<b>TD52MLC</b>	1/2"
	<b>TD52MA</b>	1/4" 3/8", 1/2", 3/4" and 1"
	<b>TD52MLCA</b>	1/2"

### Pressure/temperature limits



The product **must not** be used in this region.

Body design conditions		PN63
PMA	Maximum allowable pressure	63 bar g @ 120°C
TMA	Maximum allowable temperature	425°C @ 42 bar g
Minimum allowable temperature		0°C
PMO	Maximum operating pressure for saturated steam service	52 bar g
TMO	Maximum operating TD52M and MLC temperature	400°C @ 43 bar g
	TD52MA and MLCA	255°C @ 52 bar g
Minimum operating temperature		0°C
PMOB	Maximum operating backpressure must not exceed 80% of the upstream pressure.	
Minimum operating differential pressure for satisfactory operation	TD52M and MLC	0.25 bar
	TD52MA and MLCA	0.8 bar
Designed for a maximum cold hydraulic test pressure of 95 bar g		



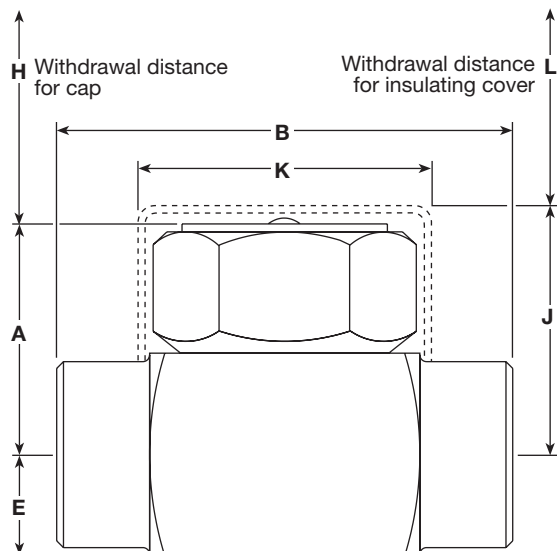
Anti-air-binding disc

### Materials

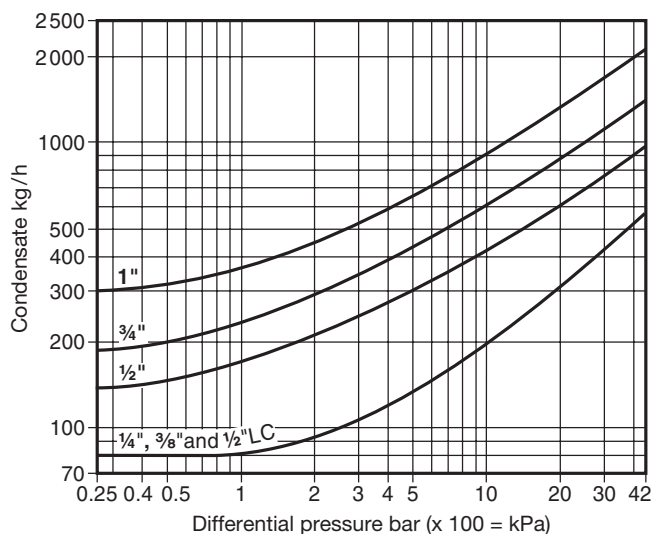
No.	Part	Material	
1	Body	Stainless steel	AISI 420 F
2	Cap	Stainless steel	AISI 416
3	Disc	Stainless steel	BS 1449 420 S45
4	Insulating cover (optional extra)	Aluminium	BS 1470 SIC M

## Dimensions/weights (approximate) in mm and kg

Size	A	B	E	H	J	K	L	Weight
¼"	37	54	13	41	53	57	38	0.45
⅜"	37	54	13	41	53	57	38	0.43
½" LC	38	65	15	41	55	57	38	0.47
½"	39	70	15	41	55	57	38	0.60
¾"	43	80	20	41	59	57	38	0.90
1"	51	89	23	41	-	-	-	1.40



## Capacities



## Safety information, installation and maintenance

For full details see the Installation and Maintenance Instructions (IM-P068-31) supplied with the product.

### Installation note:

Preferably fitted in a horizontal pipe but can be fitted in other positions.

### How to order

**Example:** 1 off Spirax Sarco ½" TD52MLC thermodynamic steam trap having screwed BSP connections.

**Note:** Where required the unit can be fitted with a special anti-air-binding disc but must be specified when placing an order e.g. TDM52MLCA.

## Available spares

The spare parts available are shown in solid outline. Parts drawn in broken line are not supplied as spares.

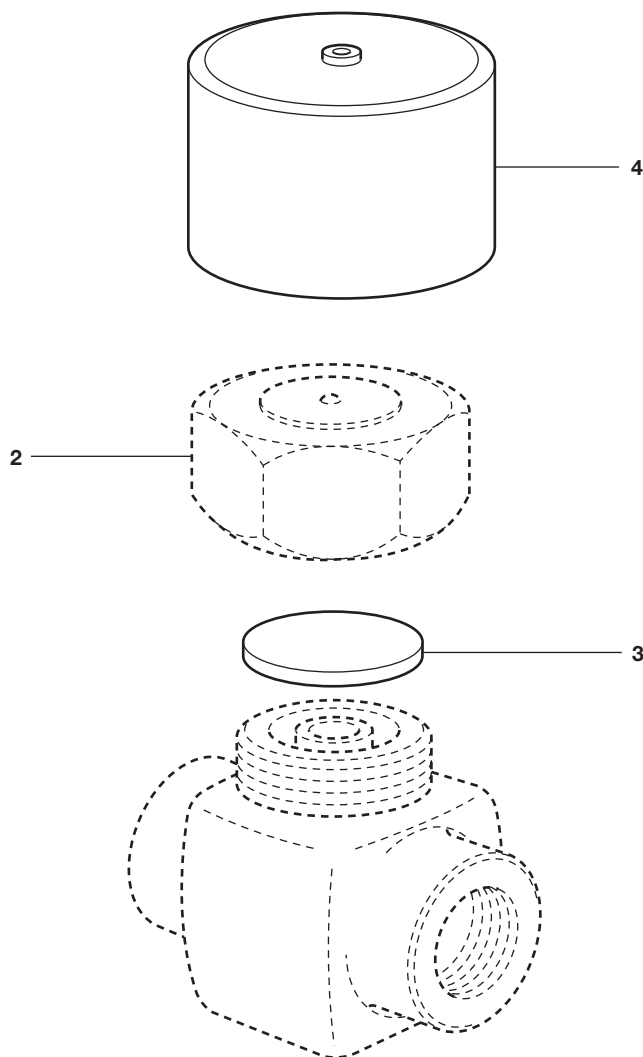
### Available spares

Disc	(packet of 3)	<b>3</b>
Insulating cover	(Not 1" size)	<b>4</b>

### How to order spares

Always order spares by using the description given in the column headed 'Available spares' and state the size and type of trap.

**Example:** 1 - Packet of 3 discs for a Spirax Sarco ½" TD52MLC thermodynamic steam trap.



## Recommended tightening torques

Item	Part	or mm	N m
2	¼"	36 A/F	180 - 200
	⅜"	36 A/F	180 - 200
	½"	36 A/F	180 - 200
	¾"	41 A/F	180 - 200
	1"	55 A/F	250 - 275