

**RUST-OLEUM®**

# **TURBOKRETE® MULTI-PURPOSE CONCRETE REPAIR AND ADHESIVE**

## DESCRIPTION AND USES

TurboKrete® Multi-Purpose Concrete Repair and Adhesive is a two component, 100% solids, high strength, high modulus, moisture insensitive, non-sag epoxy system. It is used for repairing cracks, holes, and other types of damage to concrete or as a high strength adhesive for projects that require a non-sag epoxy with a fast curing time. Cartridge packaging allows injection into cracks and holes in vertical applications.

TurboKrete Multi-Purpose Concrete Repair and Adhesive is also suitable for use as a bonding agent for almost any material, including metal, concrete, brick, wood, stone, block, and other substrates. It can be used on wet surfaces and even in complete water immersion.

## PRODUCT

Concrete Gray — Sku #257395

Component A (resin): White

Component B (hardener): Dark gray

## PACKAGING

Two component 9 oz cartridge for use with special high pressure caulking gun. 12 cartridges per case.

## COMPANION PRODUCTS

|        |  |
|--------|--|
| 257396 | Heavy-Duty Caulk Gun*                        |
| 257397 | Replacement Static Mixer Nozzle (3 per pack) |

## PRODUCT APPLICATION

### SURFACE PREPARATION

New concrete must cure 28 days at 70°F (21°C) before repairs are made. Remove all dirt, grease, oil, salt or other contaminants by washing surface with 3500 System Pure Strength®, Cleaner/Degreaser, commercial detergent or other suitable cleaner. Rinse thoroughly with fresh, clean water. Remove all loose, unsound, or deteriorated concrete. Smooth concrete surfaces should be sanded or wire brushed to provide a surface profile. For best results, cracks should be chased by grinder using a tuck point blade.

\*The Rust-Oleum Heavy Duty Caulk Gun will dispense material between 900 and 950 lbs of force. Standard heavy duty caulk guns have a typical output of 450 lbs of force, which will require increased effort to dispense the material.

## PRODUCT APPLICATION (cont.)

### MIXING

The material is properly proportioned when dispensed from the cartridge. Before attaching the static mixing nozzle to the cartridge, dispense a small amount of material into a disposable container until both materials flow evenly from the cartridge. Attach the mixing nozzle to the cartridge and dispense material until a consistent, uniform color with no streaks is obtained. The static mixing nozzle will completely and properly combine the two components and deliver fully mixed ready-to-apply material. See page 2.

For small applications, where the entire cartridge of material will not be used, a portion of material can be dispensed directly from the cartridge without the nozzle onto a flat surface and mixed together by thorough hand mixing. Do not thin with any type of solvent. Save the plastic cap and plug to reseal the unused material in the cartridge.

### APPLICATION

Apply only when air and surface temperatures are between 35-110°F (1.6-43°C). It is strongly recommended the material temperature be at least 50°F (10°C) prior to use. Colder material will require more effort to disperse material from the cartridge.

Place the mixed material directly in the area to be repaired, then work the material smooth using a hand held steel trowel. Wet the blade of the trowel with 160 Thinner to help ease the final finishing of the material. The working time is 8 minutes after the material has been dispensed.

For larger repair areas, the end of the static mixing nozzle can be cut off to increase the nozzle opening to achieve maximum flow.

When using as an adhesive for anchor bolts, fill the hole to half of the depth, then insert the anchor bolt. See page 2.

When using more than one cartridge, the nozzle can be transferred from the empty cartridge to the new one in order to minimize material loss. Before transferring the nozzle, be sure to first dispense a small amount of material from the new cartridge to ensure both components have an even flow, then immediately attach the nozzle.

Do not allow material to stand in the static mixing nozzle for longer than 5-6 minutes.

NOTE: The two component configuration of the cartridge results with total plunger travel to be only ½ the length of the cartridge to fully empty.

### CLEAN-UP

Use 160 Thinner or Xylene



## TECHNICAL DATA

# TURBOKRETE® MULTI-PURPOSE CONCRETE REPAIR AND ADHESIVE

### PERFORMANCE CHARACTERISTICS

#### COMPREHENSIVE STRENGTH

METHOD: ASTM D695 @ 65°F (7 days)

RESULT: 8,000 psi

#### BOND STRENGTH

METHOD: ASTM C882 @ 2 days

RESULT: 1,130 psi

#### BOND STRENGTH

METHOD: ASTM C882 @ 14 days

RESULT: 1,690 psi

#### HEAT DEFLECTION TEMPERATURE

METHOD: ASTM D648

RESULT: 135°F

#### CONSISTENCY

METHOD: ASTM C881

RESULT: Non-sag paste

#### GEL TIME

METHOD: ASTM C881 / 60g mass

RESULT: 8 minutes @ 75°F

#### LINEAR COEFFICIENT OF SHRINKAGE

METHOD: ASTM D2566

RESULT: 0.004 cm/cm

#### MINIMUM LOAD TIME

METHOD: Bolt-up time

RESULT: 4 hours @ 75°F

#### SHELF LIFE

24 months

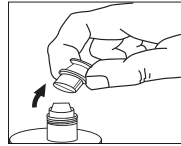
Store at 40-95°F (4-35°C)

#### MIX RATIO

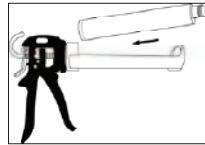
1:1 by volume

### PRODUCT APPLICATION

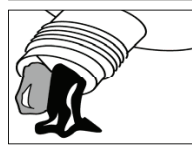
#### MIXING



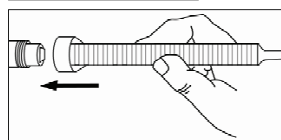
Unscrew plastic cap and remove plug from threaded end of cartridge. Save cap and plug to reseal if entire cartridge is not used.



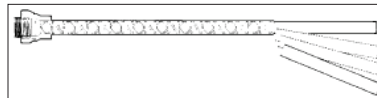
Place cartridge into a 10 oz. caulking gun. Rust-Oleum #257396 Heavy-Duty Caulk Gun is recommended.



Dispense a small amount of adhesive into a disposable container until both materials flow from cartridge.



Attach mixing nozzle to cartridge and dispense a small amount of material into same disposable container until a consistent color with no streaks is obtained.



For larger repair areas, the end of the static mixing nozzle can be cut off to increase the nozzle opening to achieve maximum flow.

#### ANCHORING INTO CONCRETE — SHORT TERM / LIGHT DUTY ANCHORING ONLY

Dispense the material from the bottom of the hole. Fill



approximately 1/2 - 5/8" of the hole depth while slowly withdrawing the nozzle. Fill completely full for holes totally submerged in water.



Insert the threaded rod or rebar to the bottom of the hole while turning clockwise. The threaded rod or rebar should be free of dirt, grease, oil, or other foreign materials. Do not disturb or bolt-up until minimum bolt-up time has passed.

The technical data and suggestions for use contained herein are correct to the best of our knowledge, and offered in good faith. The statements of this literature do not constitute a warranty, express, or implied, as to the performance of these products. As conditions and use of our materials are beyond our control, we can guarantee these products only to conform to our standards of quality, and our liability, if any, will be limited to replacement of defective materials. All technical information is subject to change without notice.