



PIPE TOOLS & VISES
SINCE 1896

Reed RG26 Roll Groovers

RG26S #08510
RG26CU #08512



RG26CU

DESCRIPTION

The Reed **RG26S** Roll Groover is designed to form standard rolled grooves in steel, stainless steel, PVC, and aluminum pipe in 2"-6" Schedule 10, and 2"-3" Schedule 40. The Reed **RG26CU** Roll Groover is designed to form standard rolled grooves in 2"-6" copper tubing. The groove is formed by a groove roll which is fed into the pipe wall. The pipe is supported by a drive roll, which is relieved to permit pipe wall deformation. The formed grooves comply with the specifications required for mechanical coupling systems. The only adjustment required is for the depth of the groove.

Designed for ease of use and portability, the RG26 series Roll Groovers provide a practical solution for manual on-site and in-place roll grooving.



WHY REED?

RG26S/RG26CU models use angled rollers that keep the tool on the pipe and in-line. Does not "walk off" pipe. It uses heavy-duty bearings, hardened and ground shafts, and rollers mounted in a ductile iron housing for durability.

SPECIFICATIONS

Capacity RG26S.....	2" - 6" Schedule 10 2" - 3" Schedule 40
Capacity RG26CU.....	2" - 6" K,L,M, and DWV
Depth Adjustment	Adjusting Nut, Depth Gauges (included), and Jam Nuts
Actuation	Crank Nut and Ratcheting Crank Handle (included)
Weight	20 lbs (9.1 kg)

WARNING

Serious injury can occur if all safety information and operating instructions are not followed. These injuries could include:

Loss of fingers, hands, arms or other body parts if clothing or gloves get caught in moving parts.



Impact injuries, including broken bones if roll groover or workpiece falls.

Wear eye protection to prevent eye injuries caused by thrown workpiece or workpiece chips.



RECOMMENDED ACCESSORIES

- Reed R450+ TriStand (#02306), Field Pipe Vise (#06027), CV6 bench mounted Chain Vise (#02540), or #64 Yoke Vise (#02460) when not using roll groover in-place.
- Reed JHV Pipe Jack (#06350) for long pipe lengths.

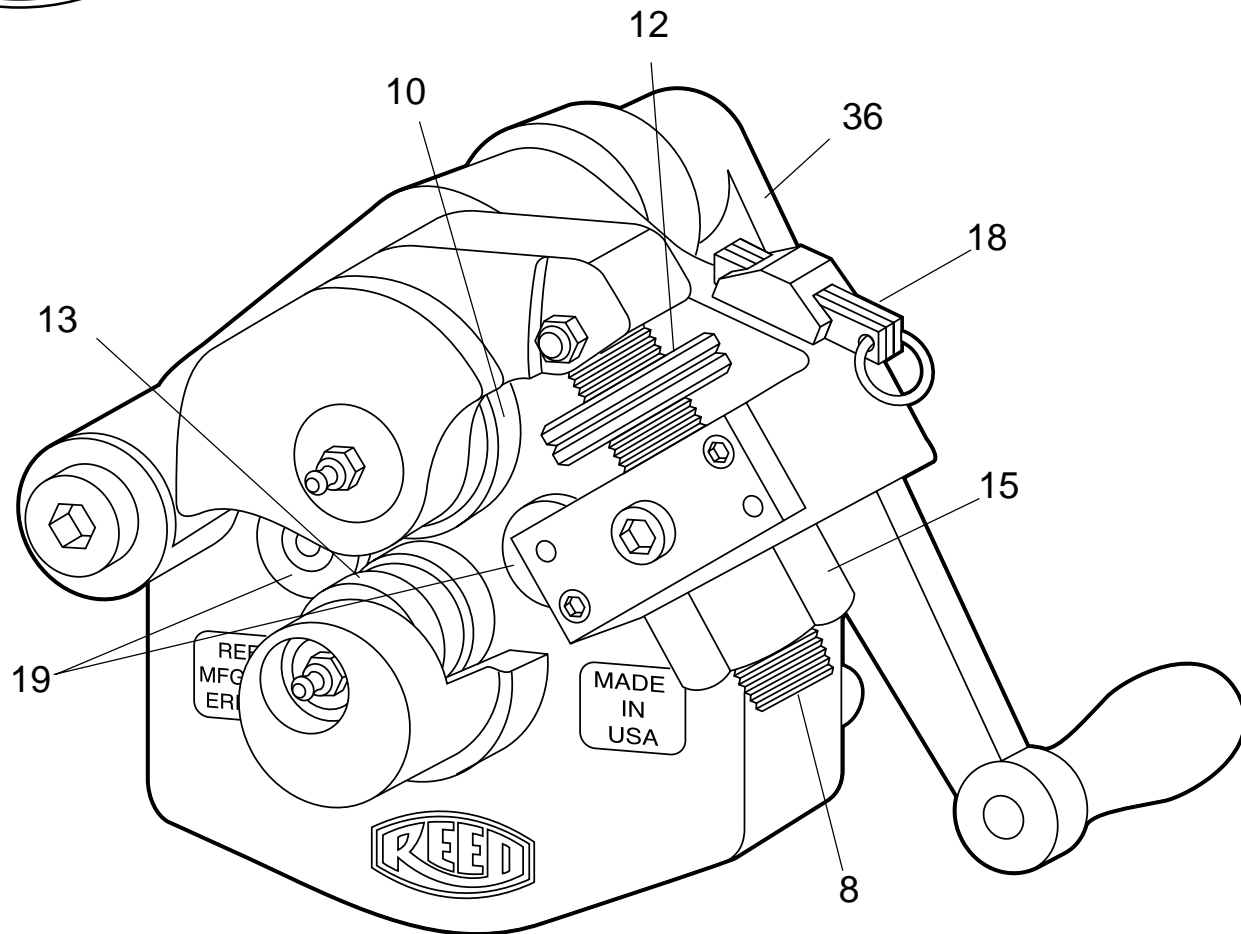


REED MANUFACTURING COMPANY

1425 WEST 8TH ST. P.O. BOX 1321, ERIE, PA 16512 USA PHONE: 800-666-3691 OR 814-452-3691 FAX: 800-456-1697 OR 814-455-1697

www.reedmfgco.com

103 - 01086-MCP



Parts List

Ref. No.	Description	RG26S 08510 Item Code	RG26CU 08512 Item Code	Ref. No.	Description	RG26S 08510 Item Code	RG26CU 08512 Item Code
1	Main Body	98520	98565	22	Bronze Bushing	40461	40461
2	Yoke	98521	98521	23	Bronze Bushing	40473	40473
3	Crank Assembly	98522	98522	24	Washer Large	40462	40462
4	Drive Shaft	98523	98523	25	Washer Small	40463	40463
5	Drive Shaft Gear	98524	98524	26	Groove Pin	30235	30235
6	Crank Shaft Gear	98525	98525	27	Grease Fitting	40338	40338
7	Crank Shaft	98526	98526	28	Roller Bearing	40459	40459
8	Feed Screw	98527	98527	29	Roller Bearing	40460	40460
9	Groove Roll Shaft	98528	98528	30	Needle Roller Bearing	40458	40458
10	Groove Roll	98529	98550	31	Roll Pin	30232	30232
11	Cover Plate Assembly	98542	98542	32	Roll Pin	30233	30233
12	Jam Nut	98531	98531	33	Flat Head Socket Screw	30216	30216
13	Drive Roll	98532	98551	34	Dowel Pin	30218	30218
14	Crank Nut	98534	98534	35	Retaining Ring	30219	30219
15	Feed Nut	98535	98535	36	Socket Set Screw	30224	30224
16	Trunnion	98536	98536	37	Shoulder Screw	30228	30228
17	Trunnion Plate	98537	98537	38	Shoulder Screw	30229	30229
18	Depth Gauge Set	98549	98566	39	Shoulder Screw	30227	30227
19	Thrust Button	98538	98538	40	Lock Nut	30231	30231
20	Knurled Pin	98539	98539	41	Hex Machine Screw	30225	30225
21	Handle	98540	98540	42	Socket Head Cap Screw	30230	30230