

"QUALITY PUMPS SINCE 1939"

Product information presented here reflects conditions at time of publication. Consult factory regarding discrepancies or inconsistencies.

ZOELLER
PUMP CO.



SECTION: 2.50.005

FM2344

0510

Supersedes

1107

MAIL TO: P.O. BOX 16347 • Louisville, KY 40256-0347
SHIP TO: 3649 Cane Run Road • Louisville, KY 40211-1961
(502) 778-2731 • 1 (800) 928-PUMP • FAX (502) 774-3624

visit our web site:
www.zoeller.com

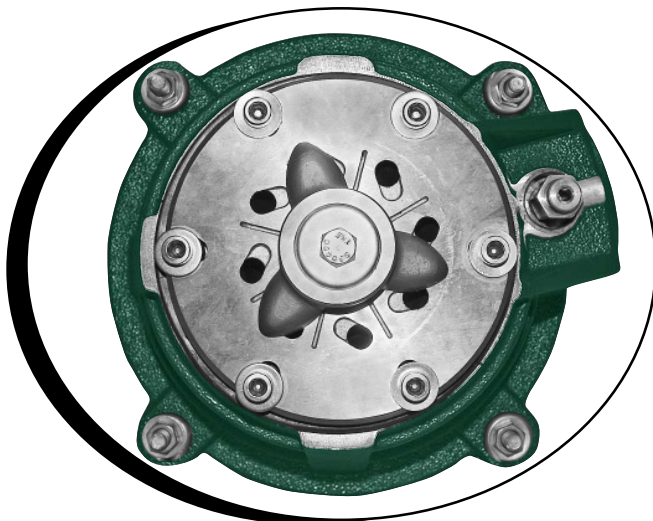
THE SHARK[®]

Series

PROGRESSING CAVITY GRINDER PUMP

FEATURES:

- Finned Class 30 Cast Iron Construction
- Corrosion Resistant Powder Coated Epoxy Finish
- Discharge Size - 1 1/4" NPT
- 1 & 2 HP, 60 Hz, 1725 RPM
 - Model 810 - 1 HP, 230 Volts/1 Ph
 - Model 815 - 2 HP, 230 Volts/1 Ph
- UL Listed 20 ft. 3-wire neoprene cord with 15 amp plug
- Oil-Filled - Hermetically Sealed Motor with Class B Windings
- Hardened Stainless Steel Cutter and Disc, Rockwell C55-60
- Stainless Steel Hydraulic Pump Rotor
- Pressure Relief Valve
- Upper and Lower Ball Bearing Construction
- Carbon/Ceramic mechanical seal
- Integral Thermal Overload Protection with Automatic Reset
- SS Mounting Stand for free standing installation
- Preassembled Systems Available



810-815 SERIES PROGRESSING CAVITY GRINDER PUMP MODELS

810 - 1 HP

815 - 2 HP



Tested to UL Standard UL778
& Certified to CSA
Standard C22.2 No. 108



Product may not be exactly as pictured.

GRINDER SYSTEMS

(A) GRINDER

STANDARD FEATURES:

- 1 1/4" NPT Discharge
- Carbon/Ceramic Tandem Seals
- Thermal Overload protection
- Hydraulic SS Rotor and Buna-n Stator
- Stainless Steel Cutter Plate / Cutter
- Stainless Steel Shaft
- Stainless Steel Hardware
- Corrosion resistant powder coated epoxy paint
- 20 ft. Power Cord Cord

OPTIONS:

- ☐ 25' Long Cords
- ☐ 35' Long Cords
- ☐ 50' Long Cords

(A) 810 & 815 PROGRESSING CAVITY GRINDER

1 OR 2 HP

1 1/4" N.P.T. DISCHARGE

P/N	WGT.	MODEL	VOLTS	PH	HP	AMP
<input type="checkbox"/> 810-0004	88	E810	230	1	1	6.0
<input type="checkbox"/> 815-0004	91	E815	230	1	2	10.5

Maximum operating temperature 130°F (54°C).

CAUTION To ensure proper pump operation, a swing or flapper style check valve must be installed in the pump discharge line. A faulty or non-functional check valve when combined with a pressure sewer may prevent the pump from starting.

Note: All variable level float switches in this section are mechanically activated and do not contain mercury.

ELECTRICAL - CONTROL / ALARM / FLOATS / JUNCTION BOX (SELECT 1 OF THE 3 COLUMNS)

QWIK BOX w/ FLOAT SWITCH

(B) ALARM PANEL

- ☐ P/N 10-0623 Indoor/Outdoor high water alarm with 15' control switch.
- ☐ P/N 10-0126 NEMA 4X high water alarm with 15' control switch and dry contact.
- ☐ P/N 10-1494 Indoor high water alarm with 15' control switch.

(C) PUMP SWITCH & WEIGHT - 1 pump switch required

Single piggy-back type 230 volt 13 amp

- ☐ P/N 10-0035 with 15' cord
- ☐ P/N 10-0689 weight for alarm float (Indoor Systems only)

(D) JUNCTION BOX - 1 required

- ☐ P/N 10-0580 Qwik-Box, NEMA 4X with 230 volt receptacle

PLUGGER PANEL

(B) CONTROL PANEL

- ☐ P/N 10-2006 Plugger panel, NEMA 4X with high water alarm and 230 volt receptacle.

(C) FLOAT SWITCHES - 2 required

Pump: One pump switch
Alarm: One control switch

- ☐ P/N 10-0706 piggy-back pump switch with 20' cord
- ☐ P/N 10-0311 piggy-back pump switch with 25' cord
- ☐ P/N 10-1956 piggy-back pump switch with 35' cord
- ☐ P/N 10-0744 mechanical control switch with 20' cord
- ☐ P/N 10-1877 mechanical control switch with 25' cord
- ☐ P/N 10-1878 mechanical control switch with 35' cord

(D) JUNCTION BOX

J-Box not recommended with this type control.

SIMPLEX PANEL

(B) CONTROL PANEL

- ☐ P/N 10-2008 Simplex panel, Model E810 pump, NEMA 4X, with high water alarm and pump circuit breaker, less float switches.
- ☐ P/N 10-1212 Simplex panel, Model E815 pump, NEMA 4X, with high water alarm and pump circuit breaker, less float switches.

(C) FLOAT SWITCHES - 2 required

Pump: One pump switch
Alarm: One control switch

- ☐ P/N 10-0706 piggy-back pump switch with 20' cord
- ☐ P/N 10-0311 piggy-back pump switch with 25' cord
- ☐ P/N 10-1956 piggy-back pump switch with 35' cord
- ☐ P/N 10-0744 mechanical control switch with 20' cord
- ☐ P/N 10-1877 mechanical control switch with 25' cord
- ☐ P/N 10-1878 mechanical control switch with 35' cord

(D) JUNCTION BOX - optional

- ☐ P/N 10-2145 NEMA 4X with 3 cord seals and conduit connection.

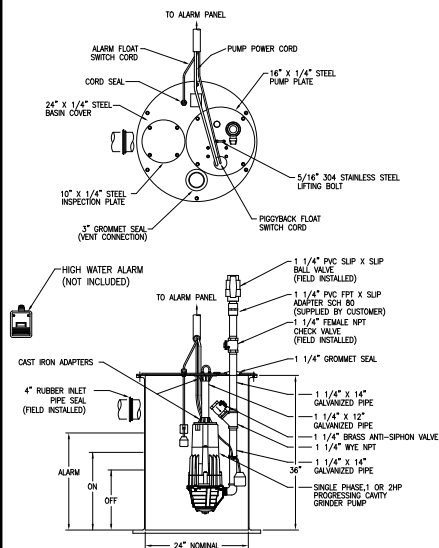
(E) INDOOR AND OUTDOOR PACKAGED SYSTEMS - PUMP & CONTROLS NOT INCLUDED

INDOOR SYSTEM

FIBERGLASS BASIN

Pump suspended from steel cover

☐ P/N 32-0029 24" X 36"



SK2628

- Fiberglass Basin
- Rust Resistant Steel Cover (epoxy coated)
- Inspection Plate
- Pump Plate
- 3" Adaptaflex Vent Seal
- 1 1/4" Adaptaflex Discharge Pipe Seal
- Cord Seal
- 1-4" Rubber Inlet Pipe Seal - Field Installed
- Pump Support Hardware
- 1 1/4" Brass Anti-siphon Device
- 1 1/4" NPT Brass Check Valve
- Ball Valve

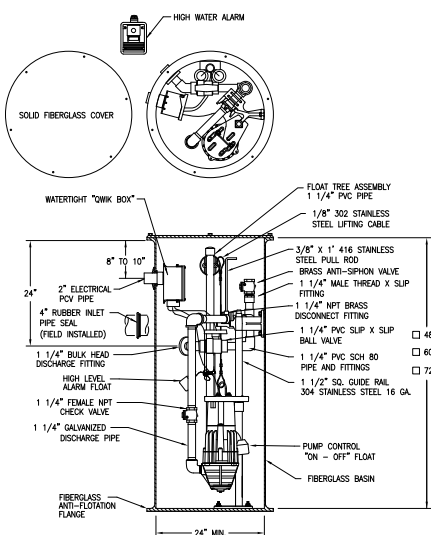
OUTDOOR SYS. w/ SQUARE GRS

FIBERGLASS BASIN & COVER SQUARE GUIDERAIL SYSTEM

☐ P/N 33-0491 24" X 48"

☐ P/N 33-0492 24" X 60"

☐ P/N 33-0493 24" X 72"



SK2569

- Fiberglass Basin with Anti-flotation Ring
- 1 1/4" Galvanized pump discharge piping to disconnect
- 1 1/4" PVC Discharge Pipe from Disconnect
- 1 1/4" Adaptaflex Discharge Pipe Seal
- Stainless Steel Square Guide Rail System
- 1' Pull Rod
- 8' SS Lifting Cable
- 1 1/4" PVC Ball Valve(s)
- 1 1/4" Brass Check Valve(s)
- 1 1/4" Brass Anti-siphon Device
- PVC Float Tree
- 1-4" Rubber Inlet Pipe Seal (Field Inst.)
- Fiberglass Cover

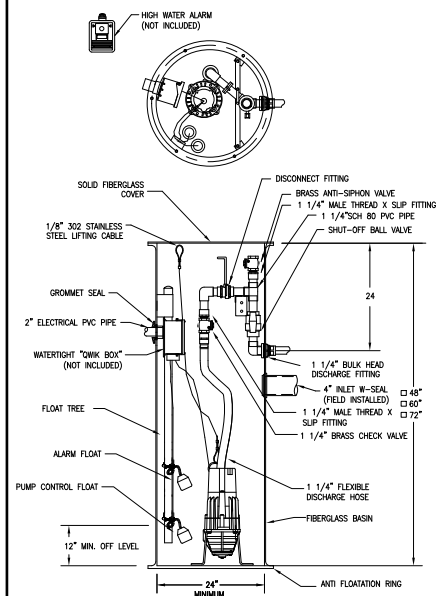
OUTDOOR SYS. w/ FLEX HOSE DC

FIBERGLASS BASIN & COVER 1.25" FLEXIBLE HOSE w/ DISCONNECT

☐ P/N 35-0006 24" X 48"

☐ P/N 35-0007 24" X 60"

☐ P/N 35-0008 24" X 72"



SK2540

- Fiberglass Basin with Anti-flotation Ring
- Flex-hose Discharge Assembly with Disconnect Fitting
- 1 1/4" PVC Discharge Pipe from Disconnect
- 1 1/4" Adaptaflex Discharge Pipe Seal
- 1' Pull Rod
- 8' SS Lifting Cable
- 1 1/4" PVC Ball Valve(s)
- 1 1/4" Brass Check Valve(s)
- 1 1/4" Brass Anti-siphon Device
- PVC Float Tree
- 1-4" Rubber Inlet Pipe Seal (Field Inst.)
- Fiberglass Cover

(F) ACCESSORIES FOR FIELD ASSEMBLED SYSTEMS

FLEX-HOSE DISCHARGE ASM.

☐ P/N 10-2038 w/30" hose

SQUARE GUIDE RAIL SYSTEM

☐ P/N 39-0106 - 48" Deep Basin

☐ P/N 39-0107 - 60" Deep Basin

☐ P/N 39-0108 - 72" Deep Basin

☐ P/N 39-0070 - Rail Extension Bkt.

EZ-OUT RAIL SYSTEMS

☐ P/N 39-0115 1 1/4"H x 1 1/4"V Galv.

☐ P/N 39-0116 1 1/4"H x 1 1/4"V SS

☐ P/N 39-0089 Intermediate Bkt. Galv.

☐ P/N 10-0090 Intermediate Bkt. SS

SS LIFTING CABLES AND ROD

☐ P/N 39-0031 8' Cable

☐ P/N 39-0032 12' Cable

☐ P/N 39-0069 1' Rod

☐ P/N 10-0789 SS Lifting Bail

GALVANIZED 1.25" DISCH. ELBOW

☐ P/N 018386

CHECK VALVE

☐ P/N 30-0223 1.25" NPT Brass

BALL VALVE

☐ P/N 30-0165 1.25" PVC

☐ P/N 30-0213 1.25" NPT Brass

PREWIRED CONDUIT (10-0580 Qwik Box Required)

☐ P/N 5100-0016 - 25'

☐ P/N 5100-0017 - 35'

☐ P/N 5100-0018 - 50'

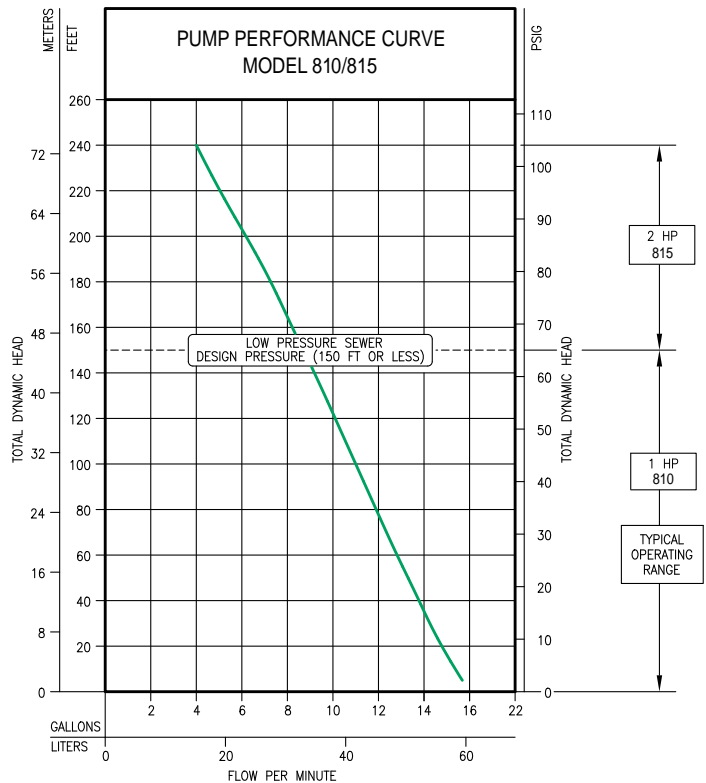
PREPACKAGED AND JOB READY SYSTEMS

INDOOR		
REQ.		
1 810 or 815 Grinder	P/N _____	(A)
1 Alarm Panel	P/N _____	(B)
1 Piggyback Pump Switch	P/N _____	(C)
1 Weight for Alarm Float	P/N _____	(C)
1 Basin, Cover and Hardware	P/N _____	(E)

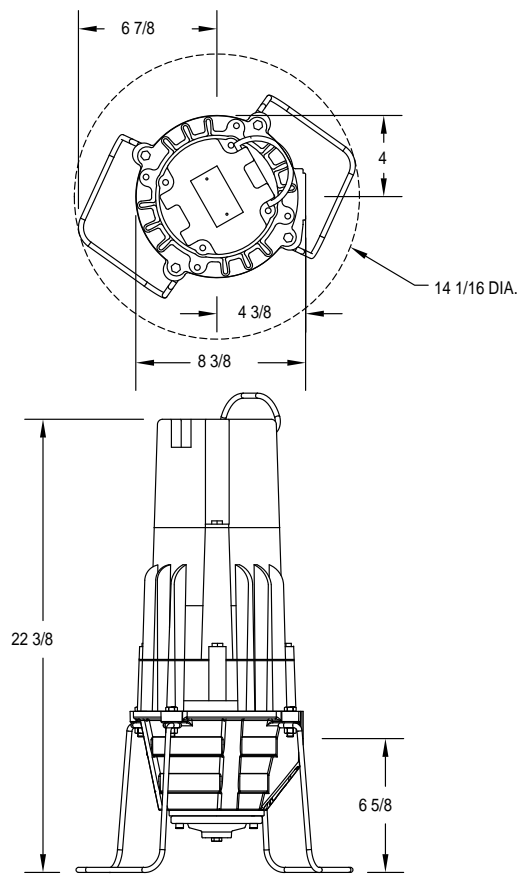
OUTDOOR		
REQ.		
1 810 or 815 Grinder	P/N _____	(A)
1 Control Panel/Alarm System	P/N _____	(B)
1 Piggyback Pump Switch	P/N _____	(C)
1 Control Switch (if required)	P/N _____	(C)
1 Junction Box (if required)	P/N _____	(D)
1 Package Basin Assembly	P/N _____	(E)

FIELD MOUNT SYSTEMS

SIMPLEX		
REQ.		
1 810 or 815 Grinder	P/N _____	(A)
1 Control Panel / Alarm System	P/N _____	(B)
1 Piggyback Pump Switch	P/N _____	(C)
1 Control Switch (if required)	P/N _____	(C)
1 Weight for Alarm Float (if required)	P/N _____	(C)
1 Junction Box (Optional)	P/N _____	(D)
1 Optional Accessories	P/N _____	(F)
	P/N _____	(F)
	P/N _____	(F)



018330



SK2533

"922" Packaged Systems

Refer to FM2370 for Packaged Fiberglass or Poly-ribbed Basin Assemblies for the models 810 and 815.

Manufacturers of... *"QUALITY PUMPS SINCE 1939"*