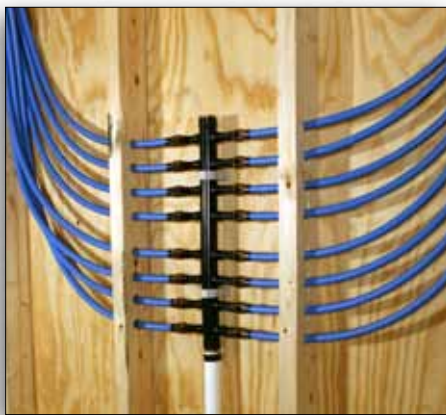


NIBCO® PEX Home Run Manifold®



With the NIBCO® PEX Home Run Manifold® you can now plumb a house or any other dwelling with ultimate system flexibility. Available from 6-Ports all the way to 40-Ports, with or without valves, you now have a choice. Constructed of cross-linked polyethylene, the same material as PEX tubing, this patent-pending manifold is ideal for residential and commercial applications.



**16-Port
Two-Sided Manifold**

**6-Port
One-Sided Manifold
with valves**

APPLICATIONS

- For use in hot & cold potable water piping systems in single and multi-family residences and in larger units including dormitories, apartments, townhouses, hotels and assisted living quarters
- Connect NIBCO® PEX tubing, valves & fittings to deliver water to each plumbing fixture
- Ideal for "Home Run" PEX design applications in residential & commercial applications
- A cost effective manifold alternative that gives you maximum flexibility
- Can be used in open radiant heat systems

MANIFOLD MATERIAL

- Molded from high density polyethylene then cross-linked into PEX for high strength and heat resistance properties
- This material is the same as NIBCO® PEX tubing and is corrosion-free, resistant to many building construction cements
- Available with high quality 3/8" or 1/2" shut-off valves; field installed
- Inlet tail ends available in 3/4", 1" or 1 1/4"
- Mounting brackets included with each manifold

DESIGN INNOVATIONS

- Outlets are same dimensions as F 876 tubing - compatible with F 1807 fittings and connectors
- Innovative manifold design is simple, durable, light weight and requires fewer connections
- Unique plug separates hot and cold water flows
- One piece design eliminates need for gaskets and potential leak paths
- One temperature and dual temperature options
- Can be installed vertically or horizontally
- Patent Pending

LISTINGS & APPROVALS

- ANSI/NSF 61
- ASTM F877
- CSA (on valves)
- Compatible with ICC

COST EFFECTIVE

- Economical: compare to copper, brass, polysulfone & polyphenylsulfone
- Energy efficient: conserves water
- Easy to install
- Low maintenance - easy to service
- Available with or without valves (valves are field installed)

NIBCO® PEX Home Run Manifold®

One-Sided Manifolds

6-Port and 12-Port Manifolds

1/2" & 3/4"



**PM6, PM6-A,
PM6-V1**
6-Port



PM12, PM12-V1
12-Port

Figure Number	Material Number	Trunk Size	Description	Trunk Joints Weight	Valves		3/8"	1/2"
					End 1	End 2		
PM6-A	PX90002	1"	6 Port Manifold	0.2600	None	None	No	No
PM6-B	PX90069	1"	6 Port Manifold - BULK	0.3170	None	None	No	No
PM6	PX90003	1"	6 Port Manifold 1 PEX	0.4430	1" PEX	1" Plug	No	No
PM6	PX90004	3/4"	6 Port Manifold 3/4 PEX	0.4370	3/4" PEX	1" Plug	No	No
PM6-P	PX90067	1"	6 Port Manifold 1 Plug Ends	0.7530	1" Plug	1" Plug	No	No
PM6-V1	PX90005	1"	6 Port Manifold 1 PEX w/valves	0.4570	1" PEX	1" Plug	No	6
PM6-V1	PX90006	3/4"	6 Port Manifold 3/4 PEX w/valves	1.4510	3/4" PEX	1" Plug	No	6
PM12	PX90007	1"	12 Port Manifold 1PEX	1.2000	1" PEX	1" Plug	No	No
PM12	PX90008	3/4"	12 Port Manifold 3/4 PEX	1.1900	3/4" PEX	1" Plug	No	No
PM12-P	PX90068	1"	12 Port Manifold 1" Plug Ends	1.4320	1" Plug	1" Plug	No	No
PM12-V1	PX90009	1"	12 Port Manifold 1PEX w/valves	3.0720	1" PEX	1" Plug	No	12
PM12-V1	PX90010	3/4"	12 Port Manifold 3/4 PEX w/valves	3.0620	3/4" PEX	1" Plug	No	12

NIBCO® PEX Home Run Manifold®

Two-Sided Manifolds

8-Port and 16-Port Manifolds

3/4", 1" and 1 1/4"

V1 Models: 1/2" Valves Only

V2 Models: 3/8" & 1/2" Valves



**PH8, PH8-A,
PH8-V1, PH8-V2**

8-Port



**PH16, PH16-A,
PH16-V1, PH16-V2**

16-Port

Figure Number	Material Number	Trunk Size	Description	Trunk Joints Weight	Valves		3/8"	1/2"
					End 1	End 2		
PH8-A	PX90011	1 1/4"	8 Port Manifold	0.2580	None	None	No	No
PH8	PX90012	1 1/4"	8 Port Manifold	0.6700	1 1/4" PEX	1 1/4" Plug	No	No
PH8	PX90013	1"	8 Port Manifold	0.6280	1" PEX	1 1/4" Plug	No	No
PH8	PX90014	3/4"	8 Port Manifold	0.6080	3/4" PEX	1 1/4" Plug	No	No
PH8-V1	PX90015	1 1/4"	8 Port Manifold w/valves	2.0220	1 1/4" PEX	1 1/4" Plug	No	8
PH8-V1	PX90016	1"	8 Port Manifold w/valves	1.9800	1" PEX	1 1/4" Plug	No	8
PH8-V1	PX90017	3/4"	8 Port Manifold w/valves	1.9600	3/4" PEX	1 1/4" Plug	No	8
PH8-V2	PX90018	1 1/4"	8 Port Manifold w/valves	2.0100	1 1/4" PEX	1 1/4" Plug	6	2
PH8-V2	PX90019	1"	8 Port Manifold w/valves	1.9680	1" PEX	1 1/4" Plug	6	2
PH8-V2	PX90020	3/4"	8 Port Manifold w/valves	1.9480	3/4" PEX	1 1/4" Plug	6	2
PH16-A	PX90021	1 1/4"	16 Port Manifold	0.5160	None	None	No	No
PH16	PX90022	1 1/4"	16 Port Manifold	0.9280	1 1/4" PEX	1 1/4" Plug	No	No
PH16	PX90023	1"	16 Port Manifold	0.8860	1" PEX	1 1/4" Plug	No	No
PH16	PX90024	3/4"	16 Port Manifold	0.8660	3/4" PEX	1 1/4" Plug	No	No
PH16	PX90088	1"	16 Port Manifold 1" FIP	1.3960	1" FIP	1 1/4" Plug	No	No
PH16-V1	PX90025	1 1/4"	16 Port Manifold w/valves	3.6320	1 1/4" PEX	1 1/4" Plug	No	16
PH16-V1	PX90026	1"	16 Port Manifold w/valves	3.5900	1" PEX	1 1/4" Plug	No	16
PH16-V1	PX90027	3/4"	16 Port Manifold w/valves	3.5700	3/4" PEX	1 1/4" Plug	No	16
PH16-V2	PX90028	1 1/4"	16 Port Manifold w/valves	3.6080	1 1/4" PEX	1 1/4" Plug	12	4
PH16-V2	PX90029	1"	16 Port Manifold w/valves	3.5660	1" PEX	1 1/4" Plug	12	4
PH16-V2	PX90030	3/4"	16 Port Manifold w/valves	3.5460	3/4" PEX	1 1/4" Plug	12	4

NIBCO® PEX Home Run Manifold®

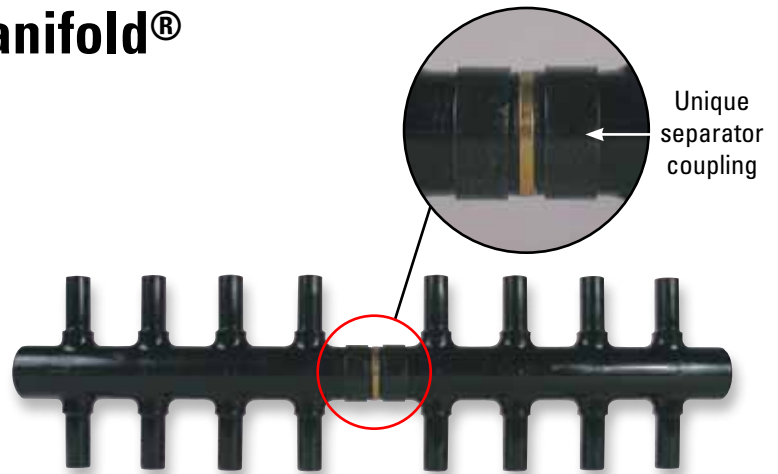
Two-Sided Manifolds

16, 24, 32 and 40-Port Dual Temperature Manifolds

3/4", 1" and 1 1/4"

V1 Models: 1/2" Valves Only
V2 Models: 3/8" & 1/2" Valves

Manifold Size	Side A	Side B
16-Port	8	8
24-Port	16	8
32-Port	16	16
40-Port	24	16



**PH16D, PH16D-V1,
PH16D-V2**

16-Port Dual Temperature
Valves

Figure Number	Material Number	Trunk Size	Description	Trunk Joints Weight	10-1/2" Dual Temperature Valves		3/8"	1/2"
					End 1	End 2		
PH16D	PX90031	1 1/4"	16 Port DUAL TEMP	1.9280	1 1/4" PEX	1 1/4" PEX	No	No
PH16D	PX90032	1"	16 Port DUAL TEMP	1.4400	1" PEX	1" PEX	No	No
PH16D	PX90033	3/4"	16 Port DUAL TEMP	1.3920	3/4" PEX	3/4" PEX	No	No
PH16D-V1	PX90034	1 1/4"	16 Port DUAL TEMP w/valves	3.6320	1 1/4" PEX	1 1/4" PEX	No	16
PH16D-V1	PX90035	1"	16 Port DUAL TEMP w/valves	3.5900	1" PEX	1" PEX	No	16
PH16D-V1	PX90036	3/4"	16 Port DUAL TEMP w/valves	3.5700	3/4" PEX	3/4" PEX	No	16
PH16D-V2	PX90037	1 1/4"	16 Port DUAL TEMP w/valves	3.6080	1 1/4" PEX	1 1/4" PEX	12	4
PH16D-V2	PX90038	1"	16 Port DUAL TEMP w/valves	3.5660	1" PEX	1" PEX	12	4
PH16D-V2	PX90039	3/4"	16 Port DUAL TEMP w/valves	3.5460	3/4" PEX	3/4" PEX	12	4
PH24D	PX90040	1 1/4"	24 Port DUAL TEMP	1.2610	1 1/4" PEX	1 1/4" PEX	No	No
PH24D	PX90041	1"	24 Port DUAL TEMP	1.2190	1" PEX	1" PEX	No	No
PH24D	PX90042	3/4"	24 Port DUAL TEMP	1.1990	3/4" PEX	3/4" PEX	No	No
PH24D-V1	PX90043	1 1/4"	24 Port DUAL TEMP w/valves	5.3170	1 1/4" PEX	1 1/4" PEX	No	24
PH24D-V1	PX90044	1"	24 Port DUAL TEMP w/valves	5.2750	1" PEX	1" PEX	No	24
PH24D-V1	PX90045	3/4"	24 Port DUAL TEMP w/valves	5.2550	3/4" PEX	3/4" PEX	No	24
PH24D-V2	PX90046	1 1/4"	24 Port DUAL TEMP w/valves	5.2810	1 1/4" PEX	1 1/4" PEX	18	6
PH24D-V2	PX90047	1"	24 Port DUAL TEMP w/valves	5.2390	1" PEX	1" PEX	18	6
PH24D-V2	PX90048	3/4"	24 Port DUAL TEMP w/valves	5.2190	3/4" PEX	3/4" PEX	18	6
PH32D	PX90049	1 1/4"	32 Port DUAL TEMP	1.5190	1 1/4" PEX	1 1/4" PEX	No	No
PH32D	PX90050	1"	32 Port DUAL TEMP	1.4770	1" PEX	1" PEX	No	No
PH32D	PX90051	3/4"	32 Port DUAL TEMP	1.4570	3/4" PEX	3/4" PEX	No	No
PH32D-V1	PX90052	1 1/4"	32 Port DUAL TEMP w/valves	6.9270	1 1/4" PEX	1 1/4" PEX	No	32
PH32D-V1	PX90053	1"	32 Port DUAL TEMP w/valves	6.8850	1" PEX	1" PEX	No	32
PH32D-V1	PX90054	3/4"	32 Port DUAL TEMP w/valves	6.8650	3/4" PEX	3/4" PEX	No	32
PH32D-V2	PX90055	1 1/4"	32 Port DUAL TEMP w/valves	6.8790	1 1/4" PEX	1 1/4" PEX	24	8
PH32D-V2	PX90056	1"	32 Port DUAL TEMP w/valves	6.8370	1" PEX	1" PEX	24	8
PH32D-V2	PX90057	3/4"	32 Port DUAL TEMP w/valves	6.8170	3/4" PEX	3/4" PEX	24	8
PH40D	PX90058	1 1/4"	40 Port DUAL TEMP	1.9400	1 1/4" PEX	1 1/4" PEX	No	No
PH40D	PX90059	1"	40 Port DUAL TEMP	1.8980	1" PEX	1" PEX	No	No
PH40D	PX90060	3/4"	40 Port DUAL TEMP	1.8780	3/4" PEX	3/4" PEX	No	No
PH40D-V1	PX90061	1 1/4"	40 Port DUAL TEMP w/valves	8.7000	1 1/4" PEX	1 1/4" PEX	No	40
PH40D-V1	PX90062	1"	40 Port DUAL TEMP w/valves	8.6580	1" PEX	1" PEX	No	40
PH40D-V1	PX90063	3/4"	40 Port DUAL TEMP w/valves	8.6380	3/4" PEX	3/4" PEX	No	40
PH40D-V2	PX90064	1 1/4"	40 Port DUAL TEMP w/valves	8.6440	1 1/4" PEX	1 1/4" PEX	28	12
PH40D-V2	PX90065	1"	40 Port DUAL TEMP w/valves	8.6020	1" PEX	1" PEX	28	12
PH40D-V2	PX90066	3/4"	40 Port DUAL TEMP w/valves	8.5820	3/4" PEX	3/4" PEX	28	12