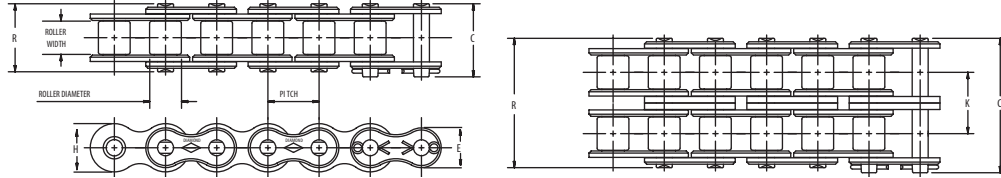




DIAMOND®



Diamond Standard Series Chains are built to ASME/ANSI B29.1 standards for dimensions, interoperability, and sprocket fit and exceed the established standards for tensile strength.



Dimensions in Inches and Pounds

ASME/ANSI Number	Pitch Inches	Roller Width	Roller Diameter	Pin Diameter	Link Plate Thickness	C	R	K	Pounds Per Foot	Average Tensile Strength	E**	H**
25	1/4	1/8	*.130	.090	.030	0.37	0.34	0.08	875	0.205	0.238
25-2	1/4	1/8	*.130	.090	.030	0.63	0.59	0.252	0.16	1750	0.205	0.238
25-3	1/4	1/8	*.130	.090	.030	0.88	0.84	0.252	0.25	2625	0.205	0.238
35	3/8	3/16	*.200	.141	.050	0.56	0.50	0.21	2100	0.308	0.356
35-2	3/8	3/16	*.200	.141	.050	0.96	0.90	0.399	0.45	4200	0.308	0.356
35-3	3/8	3/16	*.200	.141	.050	1.36	1.31	0.399	0.68	6300	0.308	0.356
35-4	3/8	3/16	*.200	.141	.050	1.76	1.70	0.399	0.91	8400	0.308	0.356
35-5	3/8	3/16	*.200	.141	.050	2.16	2.11	0.399	1.14	10500	0.308	0.356
35-6	3/8	3/16	*.200	.141	.050	2.57	2.51	0.399	1.37	12600	0.308	0.356
40	1/2	5/16	.312	.156	.060	0.72	0.67	0.41	4000	0.410	0.475
40-2	1/2	5/16	.312	.156	.060	1.29	1.24	0.566	0.80	8000	0.410	0.475
40-3	1/2	5/16	.312	.156	.060	1.85	1.80	0.566	1.20	12000	0.410	0.475
40-4	1/2	5/16	.312	.156	.060	2.42	2.37	0.566	1.60	16000	0.410	0.475
40-6	1/2	5/16	.312	.156	.060	3.56	3.51	0.566	2.42	24000	0.410	0.475
41	1/2	1/4	.306	.141	.050	0.65	0.57	0.26	2400	0.310	0.383
50	5/8	3/8	.400	.200	.080	0.89	0.83	0.70	6600	0.512	0.594
50-2	5/8	3/8	.400	.200	.080	1.60	1.55	0.713	1.40	13200	0.512	0.594
50-3	5/8	3/8	.400	.200	.080	2.31	2.26	0.713	2.09	19800	0.512	0.594
50-4	5/8	3/8	.400	.200	.080	3.03	2.97	0.713	2.78	26400	0.512	0.594
50-5	5/8	3/8	.400	.200	.080	3.75	3.69	0.713	3.47	33000	0.512	0.594
50-6	5/8	3/8	.400	.200	.080	4.46	4.40	0.713	4.17	39600	0.512	0.594
50-8	5/8	3/8	.400	.200	.080	5.89	5.83	0.713	5.56	52800	0.512	0.594
50-10	5/8	3/8	.400	.200	.080	7.32	7.26	0.713	6.93	66000	0.512	0.594
60	3/4	1/2	.469	.234	.094	1.11	1.04	0.99	8500	0.615	0.713
60-2	3/4	1/2	.469	.234	.094	2.01	1.94	0.897	1.95	17000	0.615	0.713
60-3	3/4	1/2	.469	.234	.094	2.91	2.84	0.897	2.88	25500	0.615	0.713
60-4	3/4	1/2	.469	.234	.094	3.81	3.74	0.897	3.90	34000	0.615	0.713
60-5	3/4	1/2	.469	.234	.094	4.71	4.64	0.897	4.97	42500	0.615	0.713
60-6	3/4	1/2	.469	.234	.094	5.60	5.53	0.897	5.96	51000	0.615	0.713
60-8	3/4	1/2	.469	.234	.094	7.40	7.33	0.897	7.94	68000	0.615	0.713
60-10	3/4	1/2	.469	.234	.094	9.19	9.12	0.897	9.92	85000	0.615	0.713
80	1	5/8	.625	.312	.125	1.44	1.32	1.73	14500	0.820	0.950
80-2	1	5/8	.625	.312	.125	2.59	2.47	1.153	3.37	29000	0.820	0.950

* Chains are rollerless — dimension shown is bushing diameter. ASME/ANSI 60 and larger chains are available as cottered or riveted type design. Multiple strand chains are available with slip-fit (standard) or press-fit center plates.

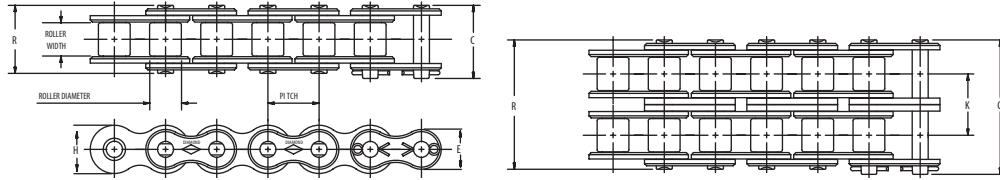
Chart continues on next page.

** Maximum values are shown.

STANDARD SERIES CHAIN



NOTHING OUTLASTS A DIAMOND.®



STANDARD SERIES CHAIN-CHAIN DESCRIPTIONS AND DIMENSIONS

ASME/ANSI Number	Pitch Inches	Roller Width	Roller Diameter	Pin Diameter	Link Plate Thickness	C	R	K	Pounds Per Foot	Average Tensile Strength	E**	H**
80-3	1	5/8	.625	.312	.125	3.74	3.62	1.153	5.02	43500	0.820	0.950
80-4	1	5/8	.625	.312	.125	4.90	4.79	1.153	6.73	58000	0.820	0.950
80-5	1	5/8	.625	.312	.125	6.06	5.94	1.153	8.40	72500	0.820	0.950
80-6	1	5/8	.625	.312	.125	7.22	7.10	1.153	10.07	87000	0.820	0.950
80-8	1	5/8	.625	.312	.125	9.53	9.40	1.153	13.41	116000	0.820	0.950
100	1 1/4	3/4	.750	.375	.156	1.73	1.61	2.51	24000	1.025	1.188
100-2	1 1/4	3/4	.750	.375	.156	3.14	3.02	1.408	4.91	48000	1.025	1.188
100-3	1 1/4	3/4	.750	.375	.156	4.56	4.43	1.408	7.40	72000	1.025	1.188
100-4	1 1/4	3/4	.750	.375	.156	5.97	5.84	1.408	9.80	96000	1.025	1.188
100-5	1 1/4	3/4	.750	.375	.156	7.38	7.25	1.408	12.20	120000	1.025	1.188
100-6	1 1/4	3/4	.750	.375	.156	8.78	8.66	1.408	14.60	144000	1.025	1.188
100-8	1 1/4	3/4	.750	.375	.156	11.60	11.48	1.408	19.40	192000	1.025	1.188
120	1 1/2	1	.875	.437	.187	2.14	2.00	3.69	34000	1.230	1.425
120-2	1 1/2	1	.875	.437	.187	3.93	3.79	1.408	7.35	68000	1.230	1.425
120-3	1 1/2	1	.875	.437	.187	5.72	5.58	1.408	11.10	102000	1.230	1.425
120-4	1 1/2	1	.875	.437	.187	7.52	7.38	1.408	14.70	136000	1.230	1.425
120-5	1 1/2	1	.875	.437	.187	9.31	9.17	1.408	18.43	170000	1.230	1.425
120-6	1 1/2	1	.875	.437	.187	11.10	10.96	1.408	22.11	204000	1.230	1.425
120-8	1 1/2	1	.875	.437	.187	14.68	14.54	1.408	29.47	272000	1.230	1.425
120-10	1 1/2	1	.875	.437	.187	18.26	18.12	1.408	36.83	340000	1.230	1.425
140	1 3/4	1	1.000	.500	.219	2.31	2.14	5.00	46000	1.435	1.663
140-2	1 3/4	1	1.000	.500	.219	4.24	4.07	1.924	9.65	92000	1.435	1.663
140-3	1 3/4	1	1.000	.500	.219	6.16	6.00	1.924	14.30	138000	1.435	1.663
140-4	1 3/4	1	1.000	.500	.219	8.09	7.93	1.924	18.95	184000	1.435	1.663
140-6	1 3/4	1	1.000	.500	.219	11.94	11.78	1.924	28.25	276000	1.435	1.663
160	2	1 1/4	1.125	.562	.250	2.73	2.54	6.53	58000	1.640	1.900
160-2	2	1 1/4	1.125	.562	.250	5.04	4.85	2.305	12.83	116000	1.640	1.900
160-3	2	1 1/4	1.125	.562	.250	7.35	7.16	2.305	19.03	174000	1.640	1.900
160-4	2	1 1/4	1.125	.562	.250	9.66	9.47	2.305	25.60	232000	1.640	1.900
160-6	2	1 1/4	1.125	.562	.250	14.27	14.09	2.305	37.78	348000	1.640	1.900
180	2 1/4	1 13/32	1.406	.687	.281	3.15	2.88	9.06	76000	1.845	2.138
180-2	2 1/4	1 13/32	1.406	.687	.281	5.75	5.48	2.592	17.67	152000	1.845	2.138
180-3	2 1/4	1 13/32	1.406	.687	.281	8.34	8.07	2.592	26.20	228000	1.845	2.138
200	2 1/2	1 1/2	1.562	.781	.312	3.44	3.12	10.65	95000	2.050	2.375
200-2	2 1/2	1 1/2	1.562	.781	.312	6.26	5.94	2.817	21.50	190000	2.050	2.375
200-3	2 1/2	1 1/2	1.562	.781	.312	9.08	8.76	2.817	32.30	285000	2.050	2.375
200-4	2 1/2	1 1/2	1.562	.781	.312	11.90	11.58	2.817	42.90	380000	2.050	2.375
200-6	2 1/2	1 1/2	1.562	.781	.312	17.52	17.21	2.817	64.50	570000	2.050	2.375
240	3	1 7/8	1.875	.937	.375	4.32	3.83	17.03	157600	2.422	2.806
240-2	3	1 7/8	1.875	.937	.375	7.77	7.27	3.458	33.44	315200	2.422	2.806
240-3	3	1 7/8	1.875	.937	.375	11.23	10.73	3.458	49.77	472800	2.422	2.806

** Maximum values are shown.

For more information on the Diamond Chain Company, its products, and its services, please visit us at www.diamondchain.com or by calling 1-800-872-4246.