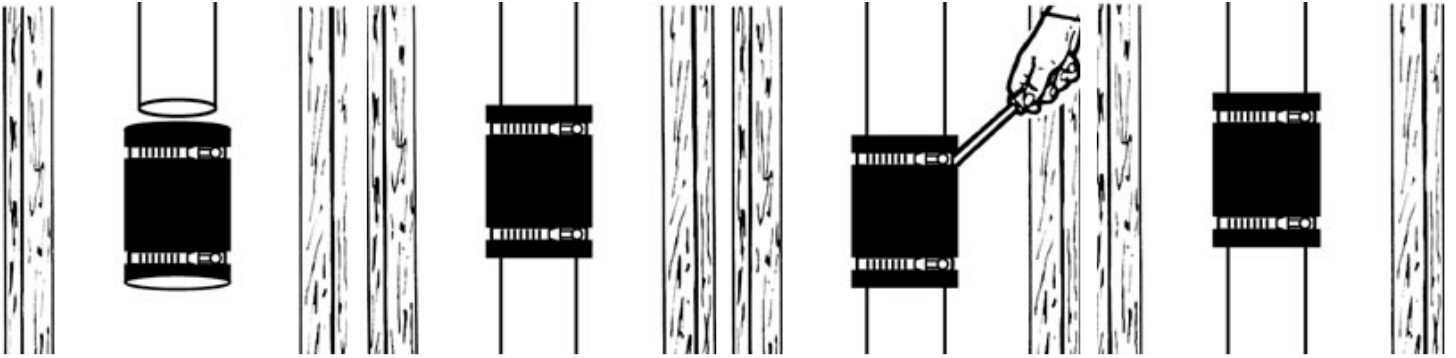


# Flexible Coupling Installation

## Standard Connection (In-House)



Loosen the stainless steel clamps. Do not remove clamps from coupling.

Slide flexible coupling over plain spigot ends of the two pipes.

Tighten to 60 inch-lbs. torque.

Support pipe and pressure test for leaks before concealing. (Max test pressure: 4.3 PSI or 29.6 KPA.)

## Standard Connection (In-Ground)



Loosen the stainless steel clamps. Do not remove clamps from coupling.

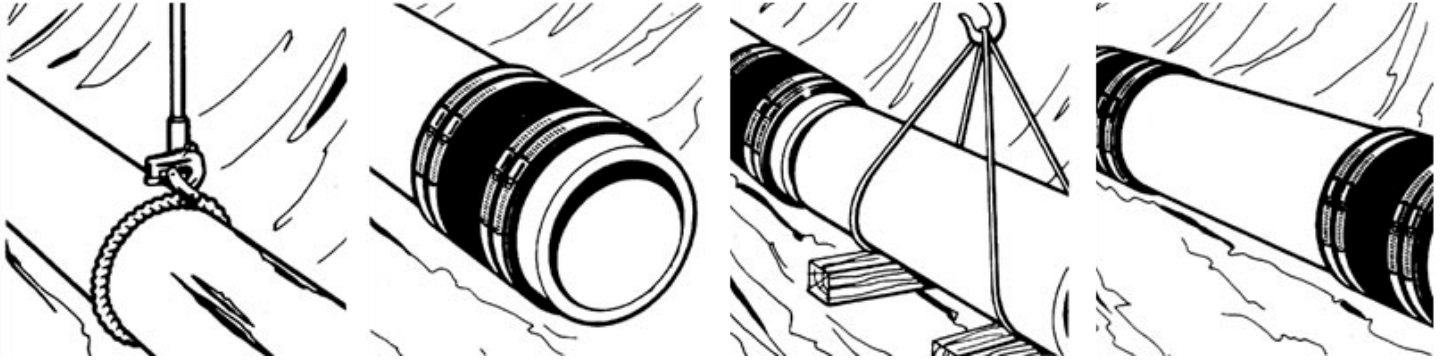
Slide flexible coupling over plain spigot ends of the two pipes.

Tighten to 60 inch-lbs. torque.

Pressure test before backfilling or concealing joint. Bed and backfill properly. (Max test pressure: 4.3 PSI or 29.6 KPA.)



## Repair and Insertions (In-Ground)



Fernco flexible couplings can be used to couple pipe when there is a break, or an insertion is needed.

Remove pipe sections, then slide flexible couplings over both pipe ends. (Remove damaged areas if broken.)

Insert new pipe or fitting then slide flexible couplings over new and old pipe ends.

Tighten clamps to 60 inch-lbs. torque. Test before backfilling or concealing joint. Bed and backfill properly. (Illustration is 15" coupling with 4 bands. Smaller size couplings have 2 bands.) (Max test pressure: 4.3 PSI or 29.6 KPA.)