

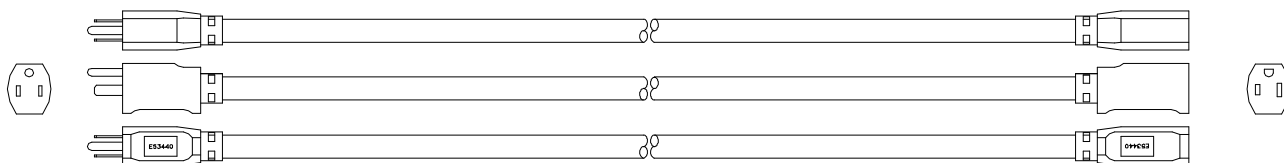


PRODUCT SPECIFICATION

CATALOG NUMBER: See table below
DESCRIPTION: Hi-Vis/Lo-Temp SJTW extension cord with enhanced cold temperature flexibility and a power indicator light in the cord connector
APPROVALS: UL Listed and CSA Certified, or UL/CUL Listed, Outdoor Use Cord Set

CONSTRUCTION PARAMETERS:

Conductor: See table below
Cable jacket material: Low temperature PVC
Overall cable O.D. (nom): See table below
Cord rating: Hard Usage per the National Electrical Code
Cable legend type: Indent print



Note: Plug and cord connector style may vary

Attachment plug configuration: NEMA 5-15P
Cord connector configuration: NEMA 5-15R
Plug and connector material: Clear PVC, with neon power indicator lamp in the cord connector

ELECTRICAL AND ENVIRONMENTAL PROPERTIES:

Cable temperature rating: -40 to +60 °C
Nominal operating voltage: 125 VAC
Maximum operating current: See table below

Catalog no.	Gauge	Length	Conductor	Cable O.D.	Current rating
02367	16/3	25 ft	26/30 BC	0.316 in	13A
02368		50 ft			10A
02369		100 ft			
02467	14/3	25 ft	41/30 BC	0.352 in	15A
02468		50 ft			13A
02469		100 ft			
02568	12/3	50 ft	65/30 BC	0.420 in	15A
02569		100 ft			

The information presented here is, to the best of our knowledge, true and accurate. However, since conditions of use are beyond our control, all recommendations or suggestions are presented without guarantee or responsibility on our part. We disclaim all liability in connection with the use of information contained herein or otherwise.

This specification is proprietary intellectual property of Coleman Cable Inc. Any information contained herein shall not be disclosed to any party without written consent of Coleman Cable Inc.