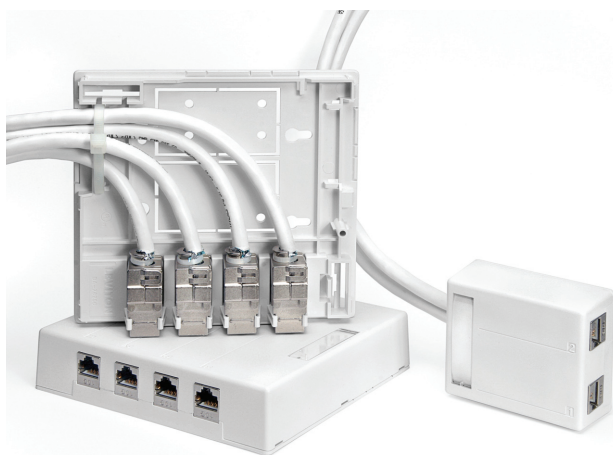


QuickPort® Surface Mount Housings for Shielded Connectors

APPLICATION

Surface Mount Housing accepts 2 or 4 QuickPort® Shielded Connectors (sold separately). Use to support voice/data applications in open office, retrofit and other surface mount environments. Surface mount housings are compatible with all QuickPort snap-in modules and connectors.



SPECIFICATION

Surface mount telecommunications outlet housings shall be a high-density low-profile design with (2) two or (4) four field-configurable ports, snap-lock cover, and cable knockouts on housing base. Housing cover (4-port) shall have raceway knockouts for top, bottom and side entry. Base shall include tie-wrap anchor points at all cable entrances. The housing shall be mountable with screws, tape or magnets, and have mounting holes compatible with standard NEMA and Euro wall boxes. The cover shall provide the option of securing it to the base with a screw that is hidden under the outlet identification window. Colors and configurations to be specified per schedule on plan. Must be constructed of high impact fire-retardant plastic rated UL 94V-0, and be UL Listed and compliant with TIA-568-B specifications.

FEATURES

- Specially designed for use with Leviton Shielded Connectors
- Compatible with all QuickPort snap-in modules and connectors
- Knockouts in cover are compatible with major raceway brands

DESIGN CONSIDERATIONS

- All ports are on one side; the housing mounts horizontally or vertically
- Side or rear cable entry
- Product will mount with tape, magnets or screws
- Mounting holes are compatible with NEMA and Euro wall boxes, with a user-provided screw (#6, 32 x 7/8")
- 4-port unit covers wall opening when mounted to 1-gang NEMA wall boxes
- A self-tapping security screw (#6 x 1/2"; not included) may be installed under the outlet ID window for added cover security
- Tie-wrap anchor points are provided at all cable entry areas
- Cover has knockouts for raceway
- Housing colors: ivory, white

STANDARDS COMPLIANCE

Meets or exceeds all applicable standards:

- UL 94V-0 flammability rating
- Complies with TIA/EIA-568-B

PHYSICAL SPECIFICATIONS

Dimensions: See page 2.

Materials: Fire-retardant ABS plastic rated UL 94V-0

Capacity: 2 and 4 individual QuickPort snap-in modules

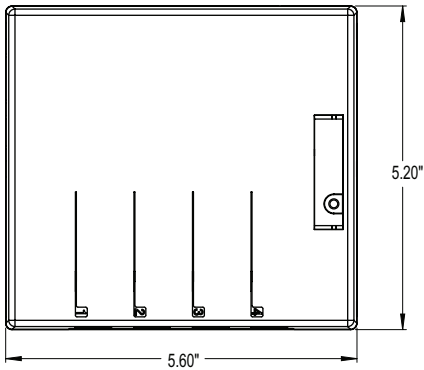
Mounting: Use screws, adhesive tape, or magnets. Two self-tapping screws and two pieces of 1" double-back adhesive tape are provided.

WARRANTY INFORMATION

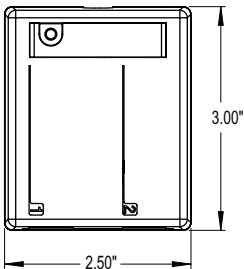
For a copy of Leviton product warranties, visit www.leviton.com.

ELECTRONIC FILES

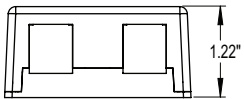
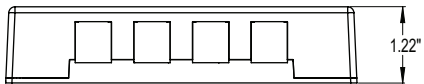
For CAD files, typical specs, or technical drawings (.DXF, .DWG), visit www.leviton.com.



4S089-4xP



4S089-2xP



4S089-2xP 4S089-4xP

PART NUMBERS

Description	Part No.
QuickPort 2-port Surface Mount Housing for Shielded Connectors	4S089-2xP
QuickPort 4-port Surface Mount Housing for Shielded Connectors	4S089-4xP

x = Color Choices: Ivory (I), White (W).

