

QuickPort Modular Furniture Faceplates with ID Windows

APPLICATION

Leviton's QuickPort® Modular Furniture Faceplates with ID windows offer field-configurable flexibility and feature a designation window for simpler, more organized workstation identification. The faceplates accept QuickPort snap-in connectors and adapters to support a variety of voice/data applications in open office environments.

SPECIFICATION

QuickPort Modular Furniture Faceplate — Standard

The modular furniture connector housing must be a field-configurable faceplate providing from one to four flush-mount ports for a variety of snap-in connectors and adapters.

QuickPort Modular Furniture Faceplate — Herman Miller

The modular furniture connector housing must be a field-configurable flush-mount faceplate compatible with Herman Miller openings, and provide from one to four flush-mount ports for a variety of snap-in connectors and adapters.

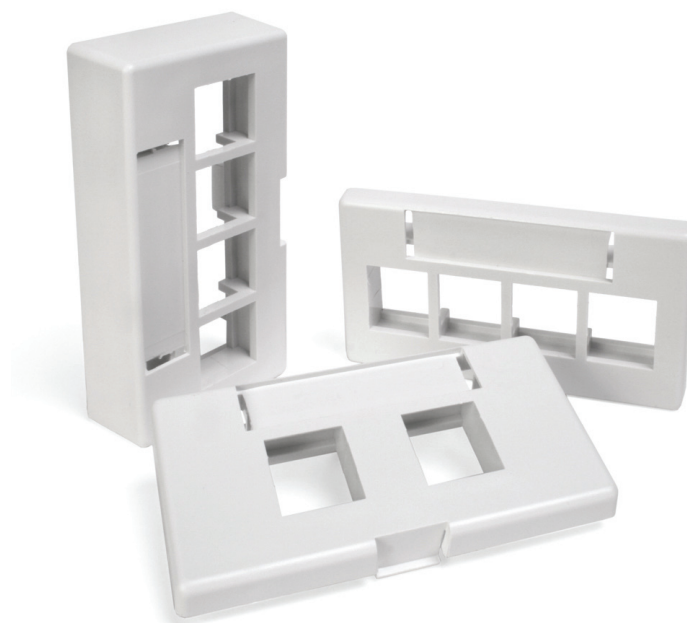
QuickPort Modular Furniture Faceplate — Extended-Depth

The modular furniture connector housing must be a field-configurable faceplate extending 0.75" from the furniture raceway to facilitate fiber or copper cable bend-radius compliance, or to compensate for shallow/crowded/powered raceway channels, and provide from one to four flush-mount ports for a variety of snap-in connectors and adapters.

The faceplate must have a rattle-free fit and a single tool-less release latch; be constructed of high-impact self-extinguishing plastic rated UL 94V-0; and be cULus Listed, and compliant with FCC Part 68, NEC Article 800 and TIA/EIA-568-B specifications.

FEATURES

- Commercial grade telephone and data patching
- Component-rated CAT 5e and CAT 6 ports
- Connectors include patented Retention Force Technology®
- Compact design
- Meets TIA-570-B bend radius requirements
- Universal T568A and T568B wiring labels
- IDC termination with Universal 568A and 568B wiring cards



49910-xxx

DESIGN CONSIDERATIONS

- Specify 49910-SXX (standard) or 49910-HXX (Herman Miller) versions (dependent on furniture type).*
- Specify 49910-EXX (same opening size as 49910-SXX) for installation into shallow raceway channels (plate has 0.5" added depth).
- Specify port identification method (colored connectors, adapters, and designation labels available).
- Configure 1, 2, 3 or 4 active ports; spare ports can be filled with blanks for later use (one blank QuickPort insert is included with 4-port plate).

* XX=various configurations and colors, see second page.

STANDARDS COMPLIANCE

Meets or exceeds all applicable standards: cULus Listed; complies with NEC® Article 800 and TIA/EIA-568-B.

PHYSICAL SPECIFICATIONS

Dimensions: See page 2

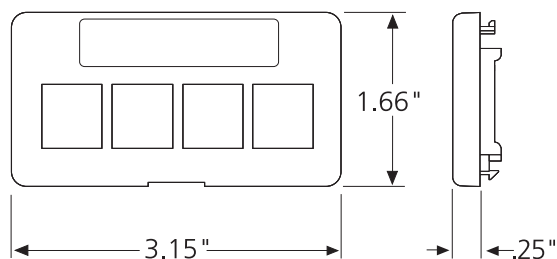
Materials: Bracket, ABS plastic, rated per UL 94V-0

WARRANTY INFORMATION

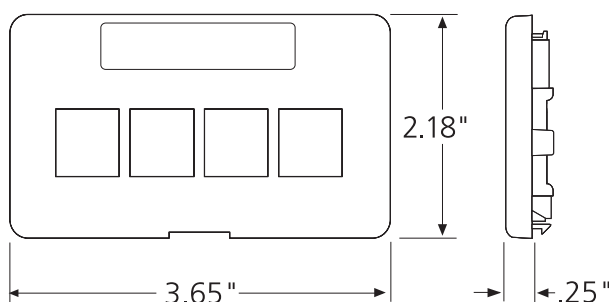
For a copy of Leviton product warranties, visit www.leviton.com.

ELECTRONIC FILES

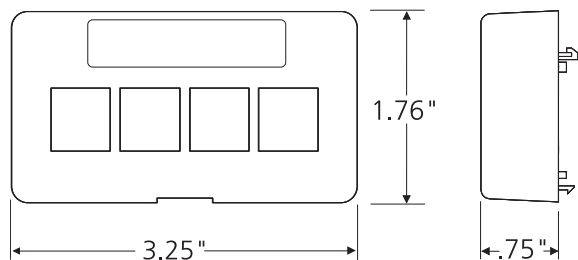
For CAD files, typical specs, or technical drawings (.DXF, .DWG), visit www.leviton.com.



4-Port Extended Depth w/ 1 QuickPort Blank



4-Port Herman Miller w/ 1 QuickPort Blank



4-Port Extended Depth w/ 1 QuickPort Blank

49910-xxx

MODULAR FURNITURE FACEPLATES

DESCRIPTION	WHITE	IVORY	GREY	BLACK
2-Port Standard Depth	49910-SW2	49910-SI2	49910-SG2	49910-SE2
4-Port Standard Depth w/ 1 QuickPort Blank	49910-SW4	49910-SI4	49910-SG4	49910-SE4
4-Port Extended Depth w/ 1 QuickPort Blank	49910-EW4	49910-EI4	49910-EG4	49910-EE4
2-Port Herman Miller	49910-HW2	49910-HI2	49910-HG2	49910-HE2
4-Port Herman Miller w/ 1 QuickPort Blank	49910-HW4	49910-HI4	49910-HG4	49910-HE4

Standard Modular Furniture Faceplates above fit openings of approximately 1.38" x 2.63".

4-port Extended Plate provides 1/2" added depth (3/4" total) for installation into shallow raceway channels, e.g., some powered channels.

Herman Miller faceplates above fit openings of approximately 1.88" x 2.98".

Standard and Extended Depth Faceplates are compatible when used with Herman Miller G1189A Reducer available from Herman Miller dealers.

