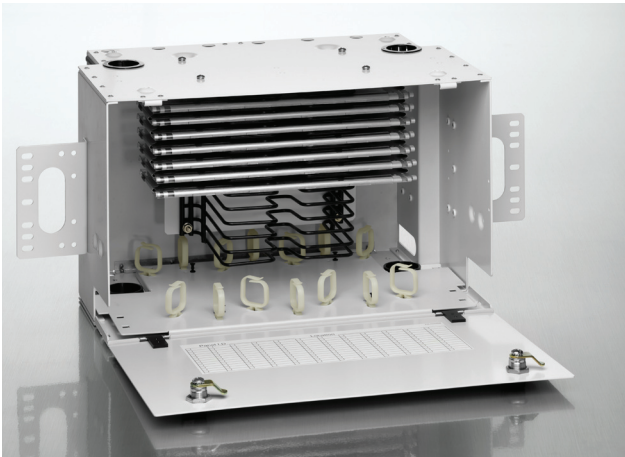


# LightSpace™ DPS Series Optical Splice Enclosure

## APPLICATION

Leviton's LightSpace DPS Series Optical Splice Enclosures are designed to protect, manage and organize fiber splices in a rack mount environment. LGX® compatibility allows users to fill and expand legacy systems. All enclosures feature a unique tray holder that allows users to select from a variety of splice tray styles, including 12 and 24 fiber versions. Units can be purchased separately or in combination.



## SPECIFICATION

Optical Distribution Enclosures shall protect, manage and organize fiber splices in a rack mount environment. Enclosures shall be LGX compatible and shall include locking options for increased security.

## FEATURES

- Accepts Leviton standard splice trays
- 19" and 23" rack mounting
- Constructed of high-strength aluminum
- Removable hinged front door and hinged rear door
- Flipcard for connector identification
- Large cable management rings for enhanced jumper routing
- Metal door for added security
- Key lock option for restricted access
- Stackable for custom applications
- Cable clamp kits for additional cable strain relief
- Grounding kit available

## DESIGN CONSIDERATIONS

- Use to protect, manage and organize fiber terminations and splices in a rack-mount environment.
- LGX compatible.

## STANDARDS COMPLIANCE

Meets NEBS GR-63.

## PHYSICAL SPECIFICATIONS

### Dimensions

DPS-525:	5.24"H x 17.0"W x 11.0"D
DPS-700:	6.99"H x 17.0"W x 11.0"D
DPS-105:	10.49"H x 17.0"W x 11.0"D

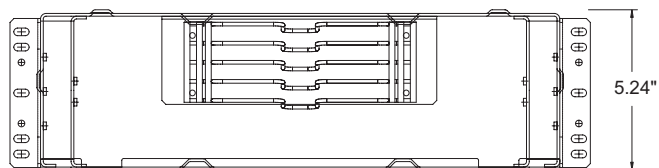
## WARRANTY INFORMATION

For a copy of Leviton product warranties, visit [www.leviton.com](http://www.leviton.com).

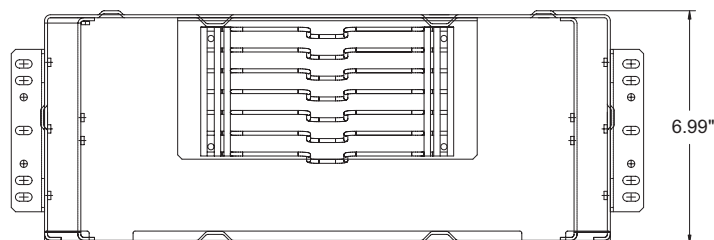
DPS-525	DPS-700	DPS-105
Holds up to 4 Splice Trays Accepts all tray sizes Standard Tray: 4" x 11.75"	Holds up to 6 Splice Trays Accepts all tray sizes Standard Tray: 4" x 11.75"	Holds up to 12 Splice Trays Accepts all tray sizes Standard Tray: 4" x 11.75"

**ELECTRONIC FILES**

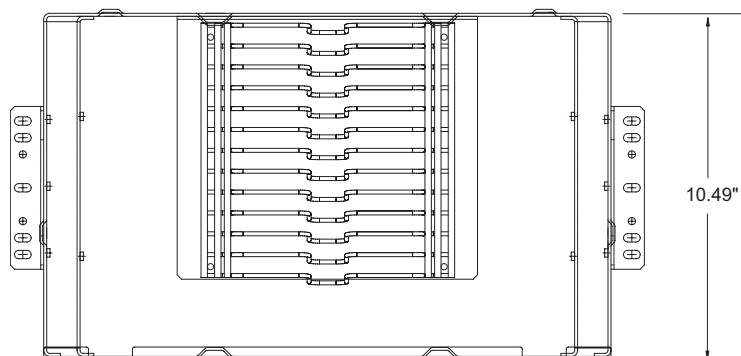
For CAD files, Typical specs, or Dimensional Line Art. (.DXF, .DWG, MS-DOS.eps or .TXT), visit [www.leviton.com](http://www.leviton.com).



**DPS-525**



**DPS-700**



**DPS-105**

**DPS3U-STD DPS4U-STD DPS6U-STD**

**PART NUMBERS**

Description	Part No.
DPS-525 Optical Splice Enclosure, 3RU	DPS3U-STD
DPS-700 Optical Splice Enclosure, 4RU	DPS4U-STD
DPS-105 Optical Splice Enclosure, 6RU	DPS6U-STD
Grounding Kit	DPGRD-KIT
Key Lock Kit	DPLOK-KIT
Universal Cable Clamp Kit (.25" - 1.25" Dia)	DPCMP-UNV

**NOTE:** Part numbers are for unconfigured product  
 Illustrations not to scale

