

## SECURE RJ COPPER SYSTEM

### APPLICATION

The Leviton Secure RJ Copper System is designed to enable port protection in standard RJ-45 copper ports in data center, telecommunication room, and work area applications. The system consists of locking patch cords, trunks, and port blockers.

Secure RJ patch cords and trunks prevent unauthorized and unintentional port access to ensure continuous connectivity of high priority ports. Port blockers prevent unauthorized port access and reserve the port that is designated for a future priority service. All components are available in eight unique colors to identify, reserve, and segregate network ports. Each color requires its own color-matched extraction tool to unlock a secured port.



### SPECIFICATION

The Secure RJ System shall consist of Slimline patch cords and trunks with installed secure housing made of transparent polycarbonate UL 94V-2 material on both ends. Port blockers shall utilize the same polycarbonate UL94V-2 material.

Connectors and port blockers cannot be removed by hand; an extraction tool shall be used for removal, preventing unauthorized or accidental moves, adds, or changes. Eight unique housing color options shall be available for color coding of copper network ports, with matching color extraction tool required for secured port access. Housings shall be transparent to allow visible access to Link/Status LEDs on networking equipment. Patch cords, trunks, and port blockers shall be compatible with high density active network equipment and patch panels, and shall be available in CAT 6 and CAT 6A performance consistent with component requirements defined in the TIA-568-C.2 standard.

### FEATURES

- Compatible with industry standard RJ-45 ports in electronic equipment, patch panels, and jacks
- Patent-pending locking mechanism cannot be released without matching-color extraction tool
- Compatible with high-density network equipment and 1RU 48-port patch panels
- Available in eight colors to reserve, identify, segregate, protect, and secure network ports
- Transparent polymer housing allows color coding while maintaining Link/Status LEDs visibility on active equipment
- Single system is compatible with all flush and most recessed RJ-45 ports
- Port blocker prevents unauthorized network connection via ports not currently in use
- Available in UTP and shielded
- Made in USA options available
- Common color coded extraction tool used for secure RJ cords, trunks, and port blockers

### DESIGN CONSIDERATIONS

- Use of eight different color options to reserve, identify, protect and segregate networks in data center, telecommunication room, and work area applications
- Secure RJ cords and port blockers are not intended to prevent malicious removal

### STANDARDS COMPLIANCE

Meets or exceeds all TIA-568-C.2 requirements

### PHYSICAL SPECIFICATIONS

**Dimensions:** See page two

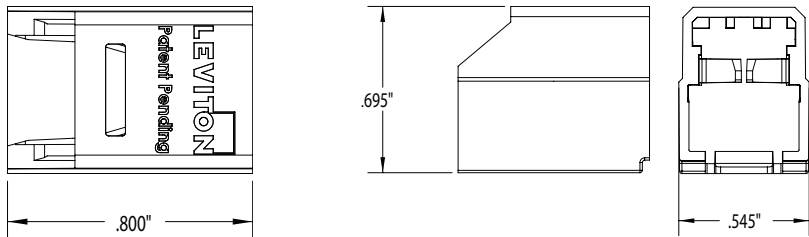
**Materials:** Secure Housing, Port Blockers, and Extraction Tools: Polycarbonate, UL94V-2

### WARRANTY INFORMATION

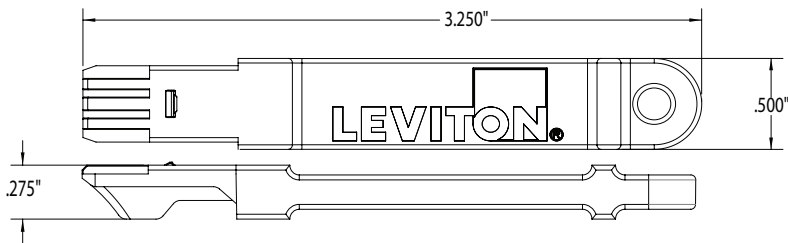
For warranty information, go to [leviton.com](http://leviton.com) or call 800.722.2072.

ELECTRONIC FILES

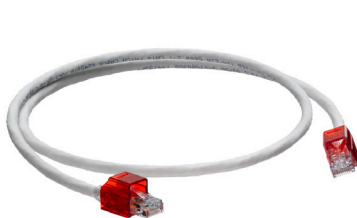
For CAD files, typical specs, or technical drawings (.DXF, .DWG, Visio), visit [www.leviton.com](http://www.leviton.com).



PORT BLOCKER



EXTRACTION TOOL



Patch Cord



Trunk



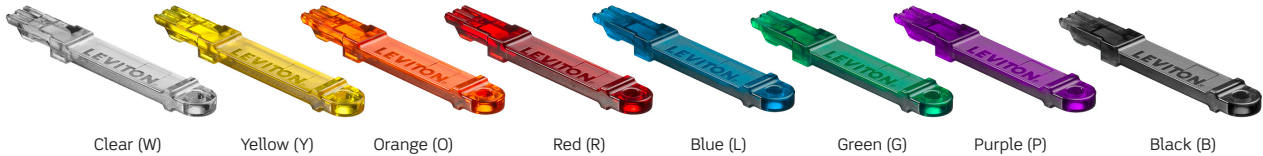
Port Blocker

SECURE RJ COPPER SYSTEM STANDARD COMPONENTS

Description	Part No.
CAT 6 SlimLine UTP Patch Cord, with Secure RJ housing on both ends	SRJ6†-xx*
Secure RJ Port Blocker, pack of 12	SRJPB-00†
Secure RJ Extraction Tool, pack of 1	SRJET-00†

Note: Additional patch cord and trunk configurations, including custom lengths, CAT 6A, and shielded, are available through Leviton's make-to-order program. Contact Leviton Inside Sales at 800.722.2082 for assistance.

† = Patch cord housing, port blocker, and extraction tool colors. Choose from the following transparent colors:



xx = Patch cord length. Choose from the following standard lengths: (05), (10), or (20) feet

\* = Patch cord jacket colors. Choose from the following colors:

