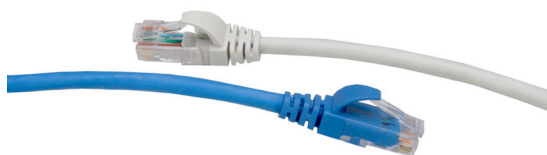


Low Smoke Zero Halogen CAT 5e & CAT 6 Patch Cords

APPLICATION

Low Smoke Zero Halogen CAT 5e and CAT 6 Patch Cords are for use in patching environments with poor air circulation where personnel and equipment may be exposed to corrosive gases and fumes during combustion. The cable jacket for these cords is designed to minimize the release of halogen gases and toxicants into the air, reducing the potential of hazardous contact in occupied spaces.



SPECIFICATION

Patch cords shall provide CAT 5e and CAT 6 performance for cross connecting in CAT 5e and CAT 6 systems comprising of equipment, cable, and appropriate connectors. The patch cords shall use 24-gauge stranded UTP conductors with a standard 8 position modular plug and strain relief boot on each end. The cords shall be available in 1-, 2-, 3-, and 5-meter lengths. Product shall be manufactured to meet performance and assembly requirements per TIA-568-C.2.

DESIGN CONSIDERATIONS

- TIA Channel performance limits the total length of patch and equipment cords to 32 feet (10 meters) per TIA-568-C.2
- Available in four standard lengths shown below (custom lengths and colors available)
- For use in public areas to limit smoke and toxic fume exposure

STANDARDS COMPLIANCE

- TIA-568-C.2
- IEC 61935-2
- Flame Propagation IEC 60332-1 [1,2] (2004-07)
- RoHS compliant
- ISO/IEC 11801

PHYSICAL SPECIFICATIONS

- Materials:** Conductor: 24-gauge, Category 5e/6 stranded UTP
- Plug:** 94V-0
- Cable Sheath:** PVC, Low Smoke Zero Halogen
- Dimensions:** Lengths: 1, 2, 3, and 5 meters
- Color:** Blue, White, and Grey with matching boots

WARRANTY INFORMATION

For a copy of Leviton product warranties, visit www.leviton.com.

PART NUMBERS

Description	Part No.
Low Smoke Zero Halogen CAT 5e Patch Cord	5Z460-XX*
Low Smoke Zero Halogen CAT 6 Patch Cord	6Z460-XX*

XX = colors: Blue (BL), White (WH), Grey (GY)

* = length (in meters): 1, 2, 3, 5