

QuickPort® Patch Panel with Magnifying Lens Label Holder

APPLICATION

Leviton's QuickPort Patch Panels are compatible with all QuickPort modules to maximize versatility with a variety of media applications and enable easy upgrades. This panel also allows for insertion of alternative QuickPort connectors to customize the application.

SPECIFICATION

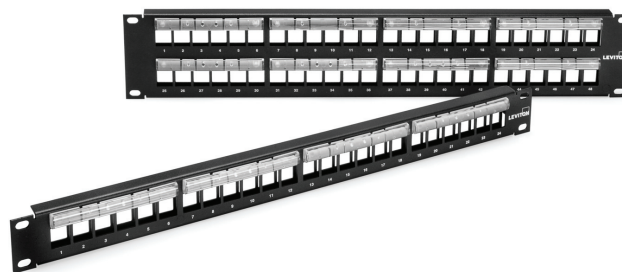
The panels shall be made of 16 gauge steel, and shall have a black painted finish with label holders above the ports and numbers below the ports. The label holder shall magnify the label printing. The panel shall be offered in 24- and 48-port configurations. The panel shall have the ability to allow for single port replacement of inoperative ports.

FEATURES

- Accepts all QuickPort style connectors
- Magnifying lens ensures visibility of port labels
- Port numbers included below port opening
- Rear cable management bar

DESIGN CONSIDERATIONS

- Includes magnifying lens label holder
- Mounts on 19" equipment racks
- Panel offered in 24- and 48-port configurations
- Rear cable management bar included



STANDARDS COMPLIANCE

Meets or exceeds all applicable standards: UL listed, CSA Certified; complies with TIA/EIA-568-A.

PHYSICAL SPECIFICATIONS

Dimensions:	24-port: 1.75"H x 19"W x 3.5"D (with management bar)
48-port:	3.5"H x 19"W x 3.5"D (with management bar)
Capacity:	24- and 48-port
Materials:	16 gauge steel, painted black

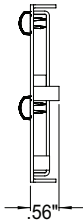
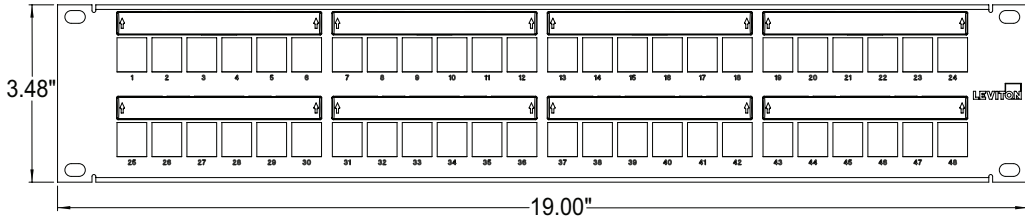
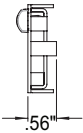
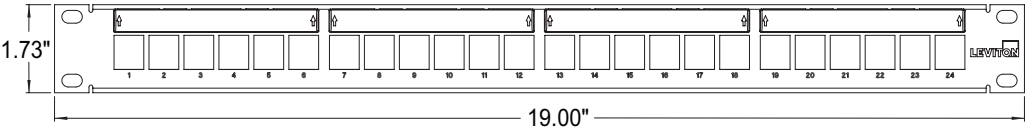
WARRANTY INFORMATION

For a copy of Leviton product warranties, visit www.leviton.com.

49255-L24 49255-L48

ELECTRONIC FILES

For CAD files, typical specs, or technical drawings (.DXF, .DWG), visit www.leviton.com.



49255-L24 49255-L48

PART NUMBERS

Description	Part No.
QuickPort Patch Panel with MagLens Label Holder, 1RU 24-port. Cable management bar included	49255-L24
QuickPort Patch Panel with MagLens Label Holder, 2RU 48-port. Cable management bar included	49255-L48

