

110-Style Voice Grade Patch Panel

APPLICATION

The 110-Style Voice Grade Patch Panel is specifically designed for voice application. The panel can be configured for one or two-pair-per-port wiring schemes. Included is a rear label which delineates between the two wiring schemes and shows 25-pair, color-coded termination.

STANDARDS COMPLIANCE

Meets all applicable standards. UL listed: complies with all ANSI/TIA/EIA-568-B requirements and meets FCC Part 68.

PHYSICAL SPECIFICATIONS

Dimensions: See second page
Materials: 16 gauge steel, black coat. Plastic components are rated UL 94V-0

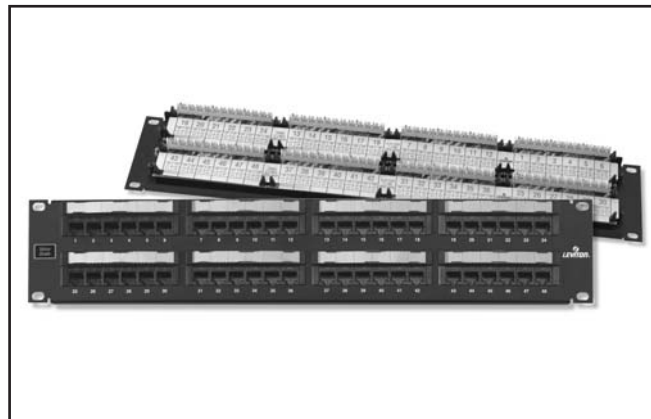
DESIGN CONSIDERATIONS

- Connector modules are in groups of 6.
- .600" wide 8P RJ-45 jacks.
- 110-style connector for quick and easy punch-down. The connector has a separation mark between rack mounts.
- Mounts on 19" wide equipment rack, or hinged wall-mount bracket.
- Patch panel includes two threaded standoffs for attaching a Cable Management Bar.
- Color-coded 25-pair wiring information card.

FEATURES

- Color-coded front labeling.

See ELECTRONIC FILES for CAD files (.DXF, .DWG, MS-DOS.EPS) on disk



WARRANTY INFORMATION

For a copy of Leviton product warranties, log on to www.levitonvoicedata.com/warranty.

For ELECTRONIC Typical Specs see (.TXT) file on disk.

TYPICAL SPECIFICATION

The Voice Grade Patch Panel shall meet ANSI/TIA/EIA-568-B standards compliance, FCC Part 68 requirements and be UL listed. The printed circuit board will be rated UL94V-0. The panel shall be configured for 24 or 48 ports, mount on a standard 19" equipment rack and accommodate top, bottom and side cable entry. The patch panel shall be made of 16 gauge steel, with a black coat.



For Technical Support Call 1-425-485-4288; in USA call 1-800-824-3005.
Spec sheets and updates are also available at www.levitonvoicedata.com.

2222 - 222nd St. SE • Bothell, WA 98021 USA
Tel: 1-800-722-2082 / 1-425-485-4288 • Fax: 1-425-483-5270 • Int'l Fax: 1-425-485-9170 • GSA Schedule Available.

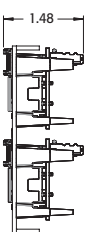
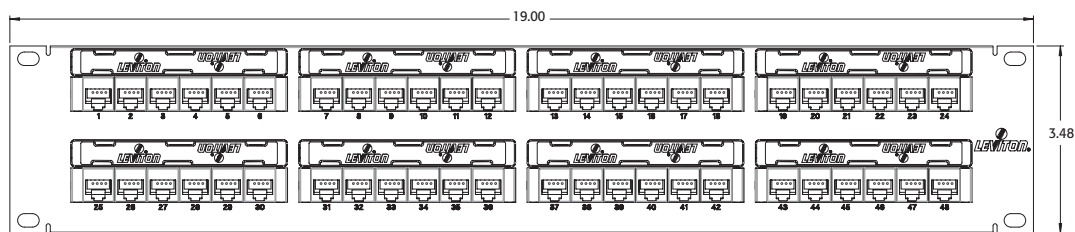
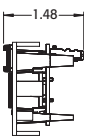
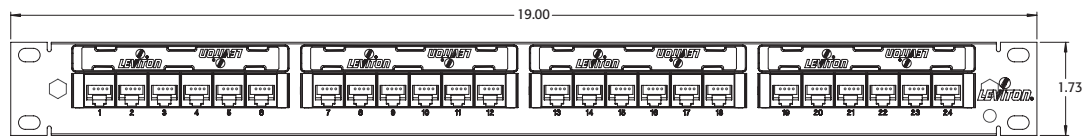


110-Style Voice Grade Patch Panel

Part Number
49013-Pxx

DIMENSIONAL LINE ART

See ELECTRONIC FILES for CAD images
(.DXF, .DWG, MS-DOS.EPS)



PART NUMBERS

Description	Part No.
Voice 8P4C Jacks in a 24 Port 110-Style Termination Patch Panel	49013-P24
Voice 8P4C Jacks in a 48 Port 110-Style Termination Patch Panel	49013-P48



For Technical Support Call 1-425-485-4288; in USA call 1-800-824-3005.
Spec sheets and updates are also available at www.levitonvoicedata.com.



2222 – 222nd St. SE • Bothell, WA 98021 USA • Tel: 1-800-722-2082 / 1-425-485-4288 • Fax: 1-425-483-5270 • Int'l Fax: 1-425-485-9170 • GSA Schedule Available.