

110 Style Voice Grade Patch Panel

APPLICATION

The 110 Style Termination Patch Panel is specifically designed for voice application. The panel can be configured for one or two-pair-per-port wiring schemes. Included is a rear label which delineates between the two wiring schemes and shows 25 pair, color coded termination.

STANDARDS COMPLIANCE

Meets all applicable standards. UL listed: complies with all ANSI/TIA/EIA-568-A requirements and meets FCC Part 68.

PHYSICAL SPECIFICATIONS

Materials: 16 gauge steel, black coat, with white, write-on blocks. Plastic components are rated UL 94V-0.

Dimensions: 49003-P24 — 1.75"H x 19"W x 1.33"D
49003-P48 — 3.5"H x 19"W x 1.33"D

DESIGN CONSIDERATIONS

- Connectors are grouped in sets of six for both 24 and 48 port panels.
- .600" wide 8P RJ-45 jacks
- 110-style connector for quick and easy punch-down. The connector has a separation mark between rack mounts.
- Mounts on 19" wide equipment rack, or hinged wall-mount bracket.
- Patch panel includes two threaded standoffs for attaching the Cable Management Bar.
- Color coded 25 pair wiring information card

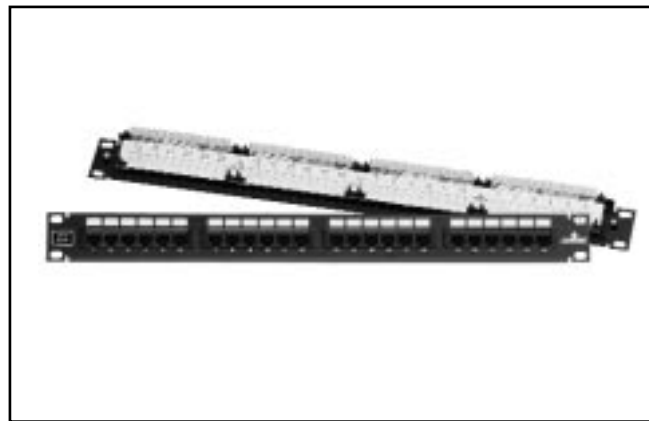
Accessories

1. Cable Management Bar (PN# 49005-CMB)
2. Hinged Wall Mount Bracket (PN# 49251-W6X)

WARRANTY INFORMATION

- One-year limited product warranty and 15-year performance guarantee are standard.
- Product and performance warranties are extended to a Lifetime as part of Leviton's Certified Cabling System.

See ELECTRONIC FILES for CAD files (.DXF, .DWG, MS-DOS.EPS) on disk



For ELECTRONIC Typical Specs see (.TXT) file on disk.

TYPICAL SPECIFICATION

The Voice Grade Patch Panel shall meet ANSI/TIA/EIA-568-A standards compliance, FCC Part 68 requirements and be UL listed. The printed circuit board will be rated UL94V-0. The panel shall be configured for 24 or 48 ports, mount on a standard 19" equipment rack and accommodate top, bottom and side cable entry. The patch panel shall be made of 16 gauge steel, with a black coat, and white, write-on blocks. The manufacturer shall provide a lifetime warranty against defects in material and workmanship and an application guarantee when installed as part of a certified system.

110 Style Voice Grade Patch Panel



For Applications Engineering Support – Call 1-425-485-4288; in USA call 1-800-722-2082
Spec sheets and updates are also available at www.levitonvoicedata.com.
See page U44 for dimensions and other pertinent information.

110 Style Voice Grade Patch Panel

Part Number

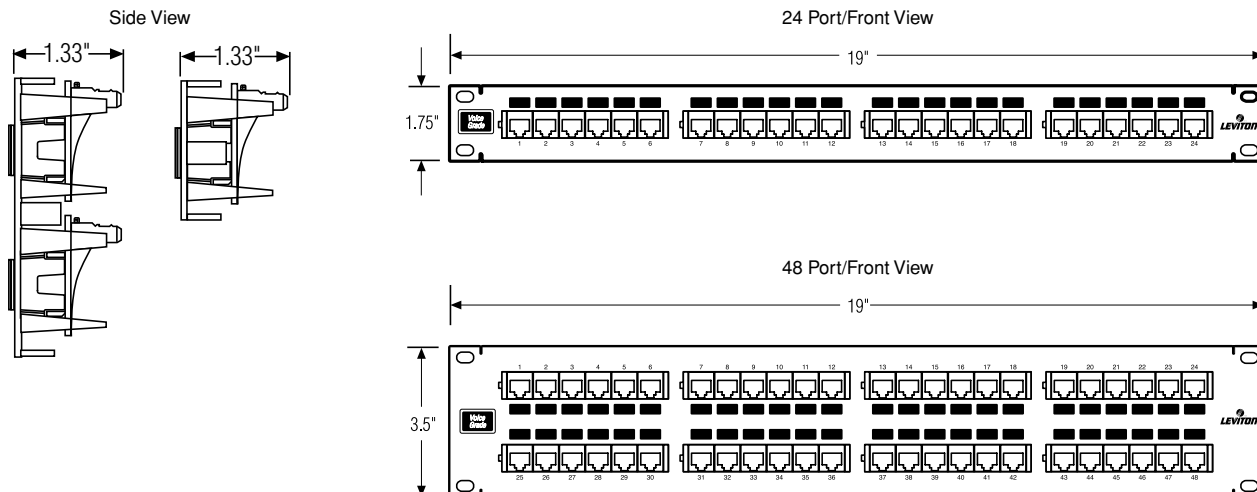
49003-P24

49003-P48

.....

DIMENSIONAL LINE ART

See ELECTRONIC FILES for CAD images
(.DXF, .DWG, MS-DOS.EPS)



PART NUMBERS

110 Style Termination Patch Panel	Part #
Voice 8P4C Jacks in a 24 Port 110 Style Termination Patch Panel	49003-P24
Voice 8P4C Jacks in a 48 Port 110 Style Termination Patch Panel	49003-P48

ACCESSORIES (sold separately)

110 Style Termination Patch Panel	Part #
Cable Management Bar	49005-CMB
Hinged Wall Mount Bracket	49251-W6X



For Applications Engineering Support – Call 1-425-485-4288; in USA call 1-800-722-2082.
Spec sheets and updates are also available at www.levitonvoicedata.com.



2222 – 222nd St. SE • Bothell, WA 98021 USA • Tel: 1-800-722-2082 / 1-425-485-4288 • Fax: 1-425-483-5270 • Int'l Fax: 1-425-485-9170 • GSA# GS-35F-4785G