

# LevNet RF Self-Powered Wireless Solutions Dimmer Modules



RF Constant Voltage LED Dimmer



Constant Voltage LED Dimmer  
(without wireless capability)



0-10V RF Dimmer

**Self-powered wireless technology means no new wiring is required.** Leviton LevNet RF Self-Powered Wireless Solutions are easy to install and maintenance-free, reducing ongoing manual work and material costs while reducing energy. EnOcean® technology allows energy harvesting LevNet RF Transmitters to operate indefinitely without the use of batteries. The kinetic motion of a switch actuation, light on a solar cell or temperature differentials in the environment provide power to LevNet RF Transmitters, allowing zero-maintenance wireless devices. The LevNet RF line includes a broad range of products that operate in the uncrowded 315MHz radio frequency (RF) band offering greater transmission range (50-150 feet) than other wireless technologies with minimal competitive traffic.



**LevNet RF Dimmer Modules** receive signals from LevNet RF Sensors, Switches and Transmitters to control lighting. Self-powered wireless technology eliminates control switch wiring making them the ideal solution for retrofits and new construction. Installation is quick and easy with no additional wiring required. It takes only minutes to install and configure.

## APPLICATIONS

- Retrofits
- New construction
- Conference rooms
- Classrooms
- Lounges/Lobbies
- Private offices
- Executive offices
- Restrooms
- Daycare facilities
- Multimedia areas

## PRODUCT DATA

### CONSTANT VOLTAGE LED DIMMER (WSD02-010 | WSD02-020)

Available with or without RF capabilities, the LevNet RF Constant Voltage LED Dimmers deliver 65,000 pulse width modulation (PWM) dimming steps to provide seamless and continuous dimming through all light levels. The RF LED Dimmer (WSD02-010) responds to wireless switches and other transmitters.

Both models can dim and turn OFF lights based on signals from wired sensors detecting occupancy or available natural light. A single transmitter can control an unlimited number of RF Dimmers in range. The RF LED Dimmer also functions as a repeater.



### 0-10V RF DIMMER WITH ON/OFF CONTROL AND SENSOR INPUT (WSD01-001)

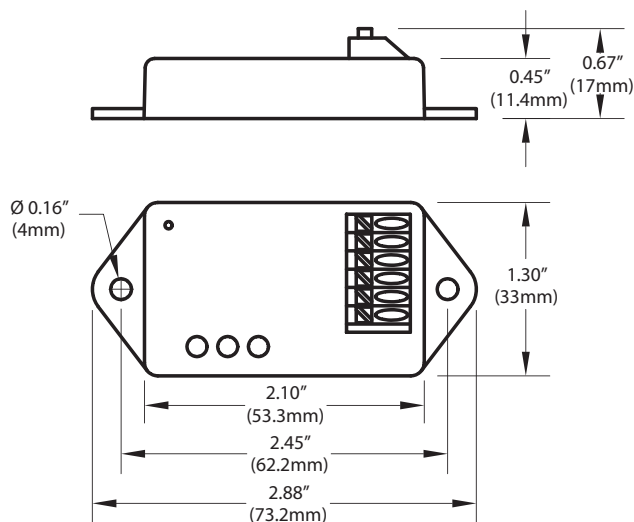
The LevNet RF 0-10V RF Dimmer responds to wireless switches and transmitters to control dimmable LED power supplies, dimmable fluorescent ballasts or actuators. The Dimmer can also turn OFF or dim lights based on signals from wireless or wired sensors detecting occupancy or available natural light. A single transmitter can control an unlimited number of 0-10V Dimmers in range. The 0-10V Dimmer also functions as a repeater.



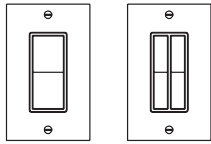
## FEATURES

- **Power consumption:** save 70% over other wire-less technologies
- **Long operation:** with a 50-150' range, LevNet RF provides the longest reliable range in the industry
- **Easy-to-use:** programs in seconds; run zero switch-leg or traveler wires
- **Reliable operation:** error checking ensures Receiver only responds to appropriate Transmitters on all packet transfers
- **Save energy:** connect the LED Dimmer or dimming Receiver to a LevNet RF Sensor or program all lights to respond to a single master Switch
- **Ultra smooth 65,000 step dimming:** architectural lighting, load shedding, manual-ON/OFF and auto-OFF controls and DIM or ON/OFF control of PWM LED lights
- **Control the way you want it:** control the LevNet RF Dimmer Modules with a variety of devices - Self-Powered Wireless Switches, Occupancy Sensors, Light Sensors and more

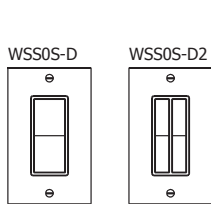
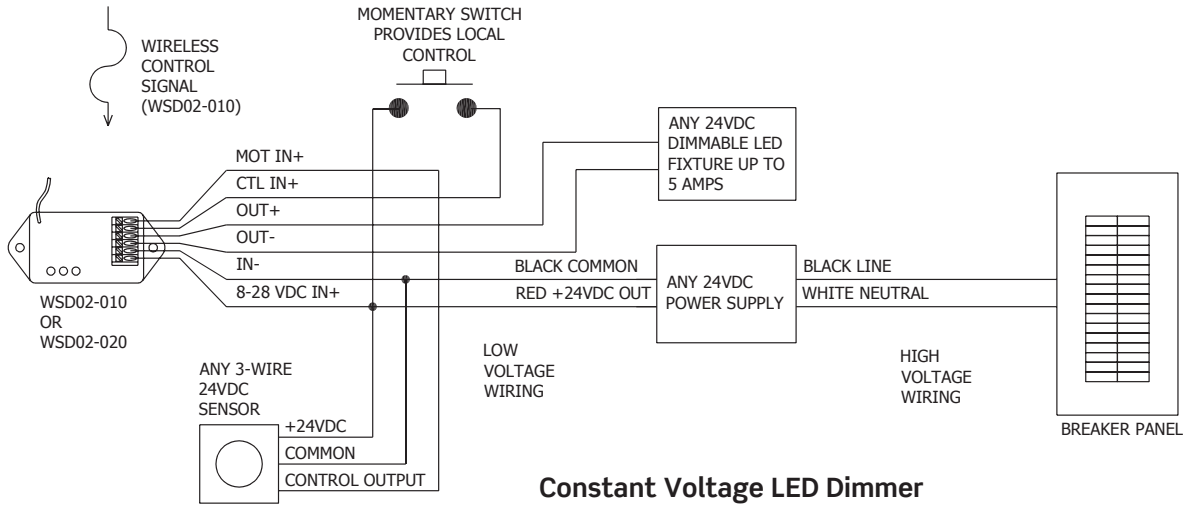
## DIMENSIONS



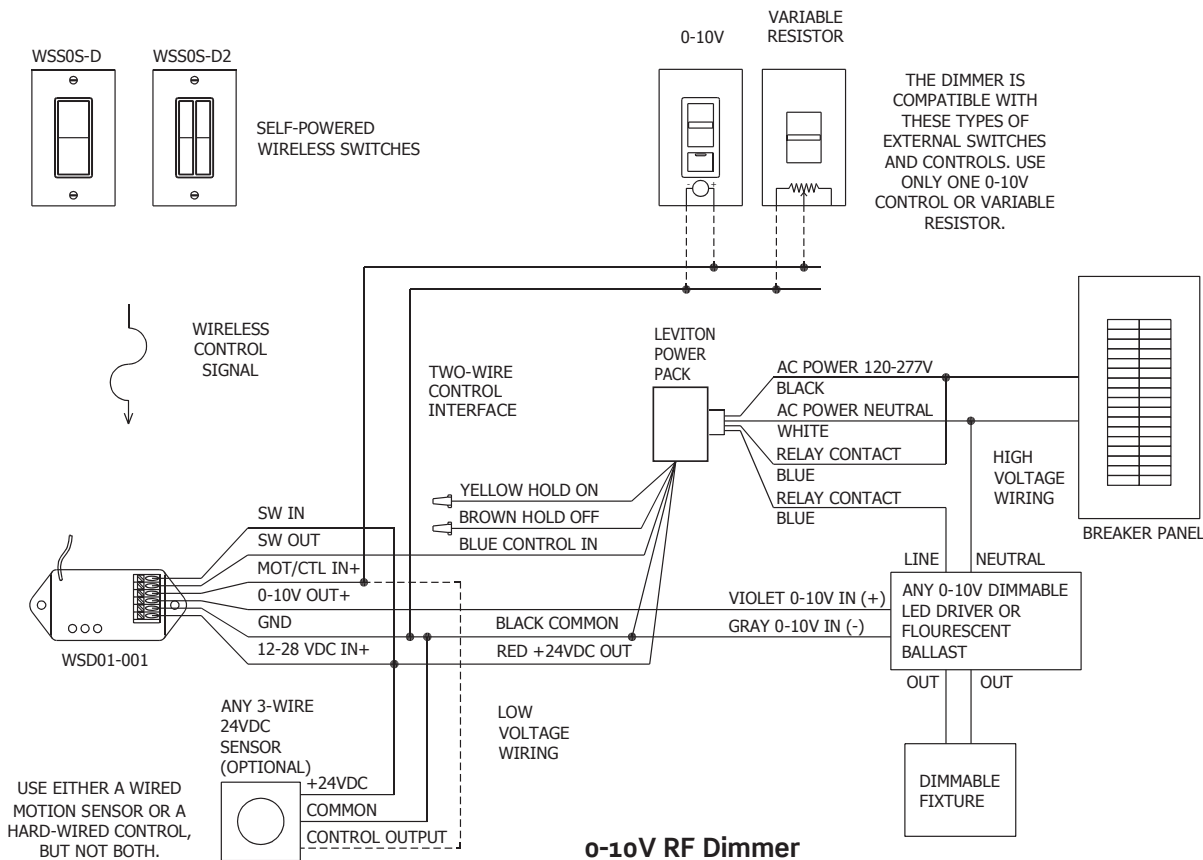
## WIRING DIAGRAMS



SELF-POWERED  
WIRELESS SWITCHES



SELF-POWERED  
WIRELESS SWITCHES



## Leviton Mfg. Co., Inc. Lighting Management Systems

201 N. Service Rd. Melville, NY 11747-3138 Tech Line: 1-800-824-3005 Fax: 1-800-832-9538 [www.leviton.com/lms](http://www.leviton.com/lms)  
© 2010 Leviton Manufacturing Co., Inc. All rights reserved. Subject to change without notice.

**SPECIFICATIONS**

	<b>RF CONSTANT VOLTAGE LED DIMMER (WSD02-010)</b>	<b>CONSTANT VOLTAGE LED DIMMER (WSD02-020)</b>	<b>0-10V RF DIMMER (WSD01-001)</b>
Range	50-150 feet	-	50-150 feet
Frequency	315MHz	-	315MHz
Memory	Stores up to 30 Transmitter IDs	-	Stores up to 30 Transmitter IDs
Power Supply Input Rating	8-28VDC, 40mA (not incl. load current)		12-28V, 40mA
Sensor Input Rating	0-28VDC, <1V is Low, >3V is High		
Output Rating	Constant voltage 0-28VDC, 5A max		4mA, 0-10V Output
Output Rating, Switched Output	-		5A DC, Isolated, 30VDC Max
Input Channels	1 Motion Detector / Sensor Input 1 Wired Control Switch		1 Motion Detector / Sensor Input
Output Channels	1 Output PWM Dimming		1 Output 0-10V, 1 Switch Output
Operating Temperature	-13°F to 140°F (-25°C to +60°C)		
Storage Temperature	-40°F to 140°F (-40°C to +60°C)		
Dimensions	2.88" W x 1.30" H x 0.67" D (73mm x 33mm x 17mm)		
Radio Certification	FCC Certified for Wireless Communication (U.S.), I.C. Certified (Canada)	-	FCC Certified for Wireless Communication (U.S.), I.C. Certified (Canada)

**ORDERING INFORMATION**

<b>CAT. NO.*</b>	<b>DESCRIPTION</b>
WSD02-010	RF Constant Voltage LED Dimmer with Wireless Capability
WSD02-020	Constant Voltage LED Dimmer (without wireless capability)
WSD01-001	0-10V RF Dimmer with ON/OFF Control and Sensor Input

\*Made in USA, ARRA and Buy American compliant.

**LEVITON SPECIFICATION SUBMITTAL**

JOB NAME:	CATALOG NUMBERS:
JOB NUMBER:	

**Leviton Manufacturing Co., Inc. Lighting Management Systems**

201 N. Service Rd. Melville, NY 11747-3138 Tech Line: 1-800-824-3005 Fax: 1-800-832-9538 [www.leviton.com/lms](http://www.leviton.com/lms)

**Leviton Manufacturing of Canada, Ltd.**

165 Hymus Boulevard, Pointe Claire, Quebec H9R 1E9 • Telephone: 1-800-469-7890 • FAX: 1-800-563-1853

**Leviton S. de R.L. de C.V.**

Lago Tana 43, Mexico DF, Mexico CP 11290 • Tel. (+52) 55-5082-1040 • FAX: (+52) 5386-1797 • [www.leviton.com.mx](http://www.leviton.com.mx)

**Visit our Website at: [www.leviton.com/lms](http://www.leviton.com/lms)**

© 2010 Leviton Manufacturing Co., Inc. All rights reserved. Subject to change without notice.

G-8247/G10-ak