

Single Pole (One location) or 3-Way (Multi-location)
Electronic Low-Voltage Dimmer (Lighted)
Cat. No. VZE04-1L, 400W
Cat. No. VZE06-1L, 600W
120VAC, 60Hz
INSTALLATION INSTRUCTIONS



WARNINGS AND CAUTIONS:

- To be installed and/or used in accordance with appropriate electrical codes and regulations.
- If you are unsure about any part of these instructions, consult a qualified electrician.
- To avoid overheating and possible damage to this device and other equipment, do not install to control a receptacle, fluorescent lighting, a motor- or a transformer-operated appliance.
- Use with electronic low-voltage transformers only. Do Not use to control a magnetic low-voltage transformer. Use a Leviton magnetic low-voltage dimmer to control magnetic low-voltage transformers.
- This dimmer provides protection from overheating. An excessive load applied to the dimmer will cause the dimmer to overheat. The excess load must be removed to resume proper operation.
- Vizia™ dimmers are not compatible with standard 3-way or 4-way switches. They must be used with compatible Vizia™ remotes for multi-location dimming.
- Use only one (1) Vizia™ dimmer in a multi-location circuit with up to 9 coordinating remotes without LEDs or up to 4 matching remotes with LEDs. The remote(s) will turn the light on at the brightness level selected at the dimmer.

WARNINGS AND CAUTIONS:

- Lighting fixture and dimmer must be grounded.
- This dimmer must be installed in a wall box with a neutral connection.
- Consult fixture manufacturer to determine if their solid state transformers can be dimmed.
- Total minimum load must exceed 40W.
- Dimmer may feel warm to the touch during normal operation.
- Recommended minimum wall box depth is 2-1/2".
- Maximum wire length from dimmer to all installed remotes cannot exceed 300 ft (90 m).
- Disconnect power at circuit breaker or fuse when servicing, installing or removing fixture.
- Use this device only with copper or copper clad wire. With aluminum wire use only devices marked CO/ALR or CU/AL.

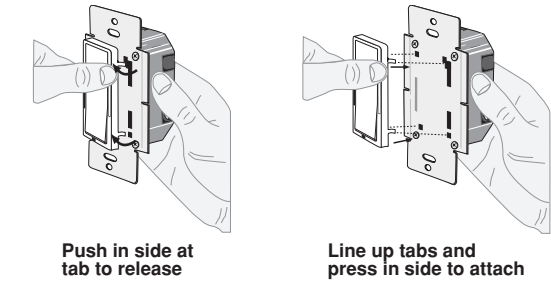
Tools needed to install your Dimmer:

Slotted/Phillips Screwdriver
Pliers
Cutters

Electrical Tape
Pencil
Ruler

Changing the color of your Dimmer:

Your Dimmer includes three color options. The Dimmer ships with the White frame attached. To change color of frame, proceed as follows:

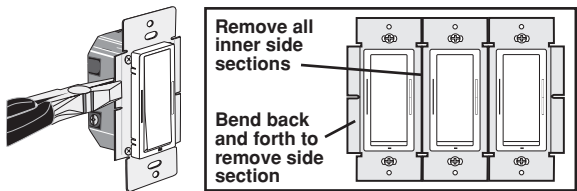


Installing Dimmer by itself or with other devices:

If installing Dimmer in a single device application, proceed with the **INSTALLING YOUR DIMMER** section. If installing Dimmer in a multi-device application, proceed as follows:

MULTI-DEVICE APPLICATION

In multi-device installations, the side sections of the mounting straps may require removal. Use pliers to carefully bend side sections back and forth until they break off.



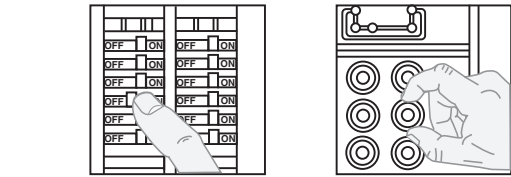
Typically, removal of the side sections in multi-dimmer installations requires a reduction of the dimmer's capacity. Refer to the chart for maximum load per dimmer.

MAXIMUM LOAD PER DIMMER FOR MULTI-DEVICE			
Cat. No.	Single	Two Devices	More than 2 Devices
VZE04	400W	350W	250W
VZE06	600W	500W	400W

INSTALLING YOUR DIMMER

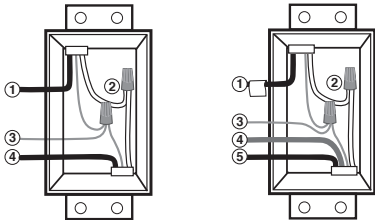
NOTE: Use check boxes ☒ when Steps are completed.

Step 1 **WARNING: TO AVOID FIRE SHOCK OR DEATH; TURN OFF POWER** at circuit breaker or fuse and test that power is off before wiring!



Step 2 **Identifying your wiring application (most common):**

NOTE: If the wiring in your wall box does not resemble any of these configurations, consult a qualified electrician.



Single Pole

1. Line (Hot)
2. Neutral
3. Ground
4. Load

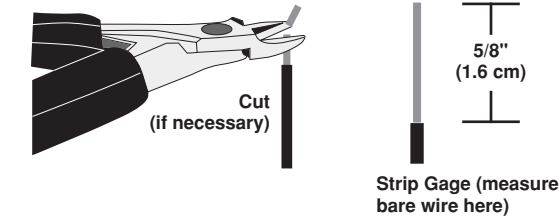
3-Way

1. Line or Load (*see important instruction below*)
2. Neutral
3. Ground
4. First Traveler – note color
5. Second Traveler – note color. **NOTE:** For matching remote w/LEDs installation, the **First Traveler** becomes Line Hot.

IMPORTANT : For 3-Way applications, note that one of the screw terminals from the old switch being removed will usually be a different color (Black) or labeled Common. Tag that wire with electrical tape and identify as the common (Line or Load) in both the dimmer wall box and remote wall box.

Step 3 **Preparing and connecting wires:**

Pull off pre-cut insulation from dimmer leads. Make sure that the ends of the wires from the wall box are **straight (cut if necessary)**. Remove insulation from each wire in the wall box as shown:

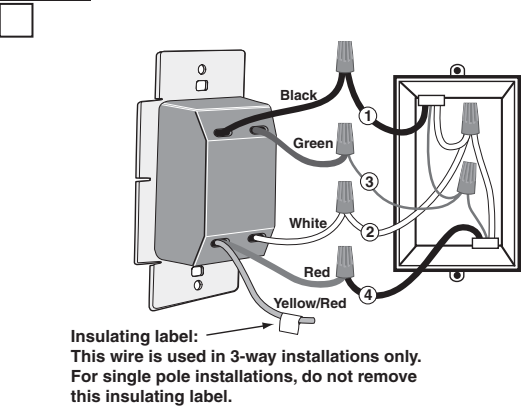


For non-standard wiring applications, refer to Wire Nut and Connector Size Chart

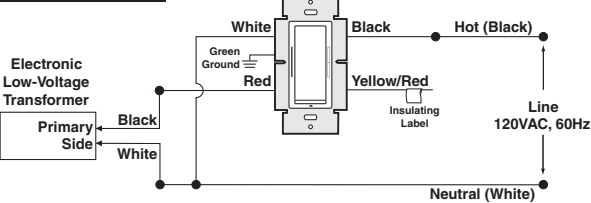
WIRE CONNECTOR / # OF COND. COMBINATION CHART
1 - #12 w/ 1 to 3 #14, #16 or #18
2 - #12 w/ 1 or 2 #16 or #18
1 - #14 w/ 1 to 4 #16 or #18
2 - #14 w/ 1 to 3 #16 or #18

- For Single-Pole Application, go to Step 4a.
- For 3-Way Coordinating Remote (no LEDs) Application, go to Step 4b.
- For 3-Way Matching Remote (with LEDs) Application, go to Step 4c.

Step 4a **Single Pole Wiring Application:**



Step 4a cont'd



WIRING DIMMER:

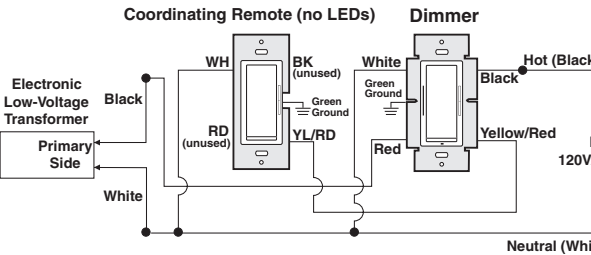
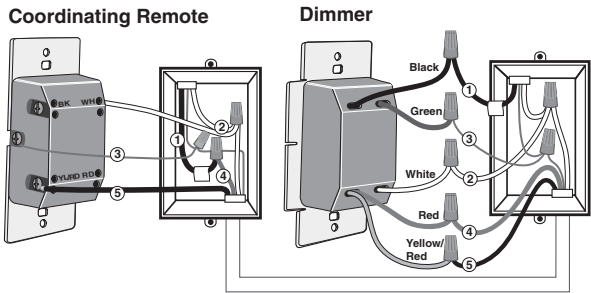
Connect wires per WIRING DIAGRAM as follows:

- Green or bare copper wire in wall box to Green dimmer lead.
- Line Hot wall box wire to Black dimmer lead.
- Load wall box wire to Red dimmer lead.
- Line Neutral wall box wire to White dimmer lead.
- Yellow/Red wire should have Red insulation label affixed.

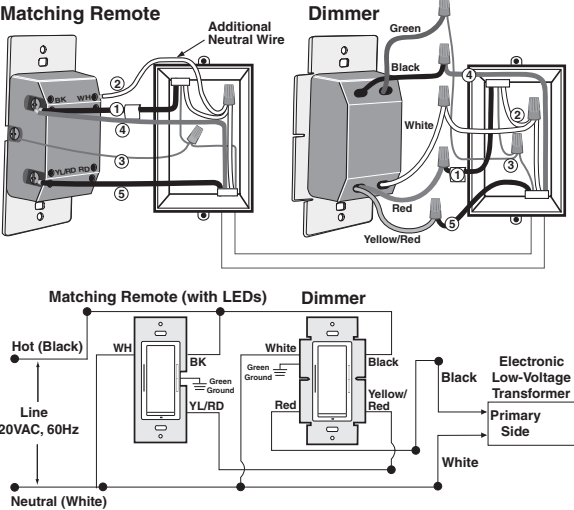
NOTE: If insulating label is not affixed to Yellow/Red dimmer lead, use electrical tape to cover.

- Proceed to Step 5.

Step 4b **3-Way Wiring with Coordinating Dimming or Switching Remote (no LEDs) Application:**
(Coordinating Dimming Remote depicted)



Step 4c 3-Way Wiring with Matching Remote (w/LEDs) Application:

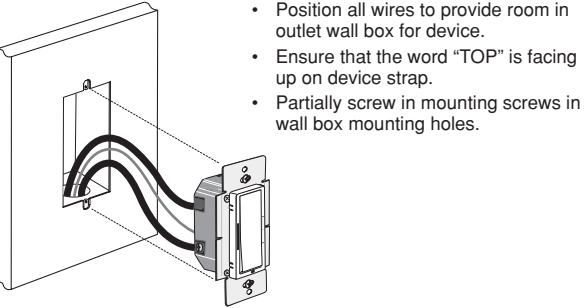


NOTE: Matching remotes are for use with non RF devices only.
NOTE: The dimmer must be installed in a wall box that has a Load connection. The matching remote must be installed in a wall box with a Line Hot connection and a Neutral connection. A Neutral wire to the matching remote needs to be added as shown.
If you are unsure about any part of these instructions, consult a qualified electrician.
NOTE: Maximum wire length from dimmer to all installed remotes cannot exceed 300 ft (90 m).

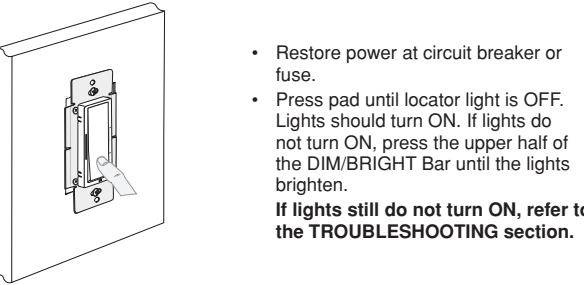
- WIRING MATCHING REMOTE (wall box with Line Hot connection):**
Connect wires per WIRING DIAGRAM as follows:
- Green or bare copper wire in wall box to Green terminal screw.
 - Line Hot (common) wall box wire identified (tagged) when removing old switch and First Traveler to Black dimmer lead.
 - Second Traveler wall box wire from dimmer to remote terminal screw marked "YL/RD" (**note wire color**). This traveler from the remote must go to Yellow/Red dimmer lead.
 - Line Neutral wall box to remote terminal screw marked "WH".

- WIRING DIMMER (wall box with Load connection):**
Connect wires per WIRING DIAGRAM as follows:
- Green or bare copper wire in wall box to Green dimmer lead.
 - Load wall box wire identified (tagged) when removing old switch to Red dimmer lead.
 - First Traveler Line Hot to Black dimmer lead.
 - Remove Red insulating label from Yellow/Red dimmer lead.
 - Second Traveler wall box wire (**note color as above**) to Yellow/Red dimmer lead. This traveler from the dimmer must go to the terminal screw on the remote marked "YL/RD".
 - Line neutral wall box wire to White dimmer lead.
 - **Proceed to Step 5.**

Step 5 Testing your Dimmer prior to mounting in wall box:

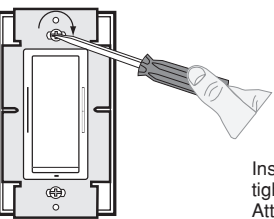


NOTE: Dress wires with a bend as shown in diagram in order to relieve stress when mounting device.



- Restore power at circuit breaker or fuse.
 - Press pad until locator light is OFF. Lights should turn ON. If lights do not turn ON, press the upper half of the DIM/BRIGHT Bar until the lights brighten.
- If lights still do not turn ON, refer to the TROUBLESHOOTING section.**

Step 6 Dimmer Mounting: TURN OFF POWER AT CIRCUIT BREAKER OR FUSE.

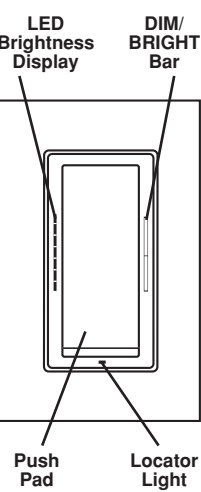


Installation may now be completed by tightening mounting screws into wall box. Attach wallplate.

Step 7 Restore Power: Restore power at circuit breaker or fuse. Installation is complete.

OPERATION

NOTE: The locator light will illuminate when the load is in the OFF position to facilitate access in the dark.
NOTE: If using the dimmer in a 3-way application, the lights will turn ON at brightness set on dimmer's DIM/BRIGHT bar. The lighting can be controlled from either the dimmer or the remote location.



Push Pad (Default settings)
Turn ON from OFF position:
Tap – Lights turn ON to preset level.
Press and Hold – Lights turn ON to full bright.
Turn OFF from ON position:
Tap – Lights turn OFF.
DIM/BRIGHT Bar
BRIGHTEN:
Press the upper half of the DIM/BRIGHT Bar – Lights brighten to desired level.
DIM:
Press the lower half of the DIM/BRIGHT Bar – Lights dim to desired level.
If you continue to hold, the lights will DIM to minimum level and then turn OFF.
NOTE: When lights are OFF you can change the light level that the lights will turn ON to using the DIM/BRIGHT Bar. If there is a power outage, when the power is restored, the lights will return to the last setting before the power interruption.

Air-Gap Switch: On the dimmer only, engage the air-gap switch by gently pulling the bottom of the push pad until it lifts completely out of the frame and a click is heard and all LED's are OFF (**refer to figure**). This will cut power to the fixture to replace the bulb. After servicing is complete, push the push pad back for normal operation.

Cleaning: Clean with a damp cloth. **DO NOT** use chemical cleaners.

Gently lift bottom of push pad out

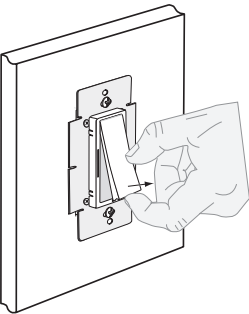
ADVANCED PROGRAMMING FEATURES

Mode 1 – Set Minimum Brightness: Set the minimum brightness level that the lights can dim to prior to turning full OFF.
Mode 2 – Set Dim-Lock: Set the brightness level that the lights will turn on to regardless of the previous light level at which they were turned OFF.
Mode 3 – Set Fade Rate: Set the amount of time (in seconds) that the lights will have to turn ON or OFF. Fade rates can be set to one of seven different settings.

Advanced Features Summary			
Mode	Description	Range	Default
1	Set Min. Brightness	1 - 50 %	25 %
2	Set Dim-Lock Level	0 - 100 %, 0 = no lock	0
3	Select Fade Rate	1, 2, 3, 4, 5, 6 or 7	Preset #1

To Program:
NOTE: Have a flashlight handy if this dimmer controls the only light source in the room.

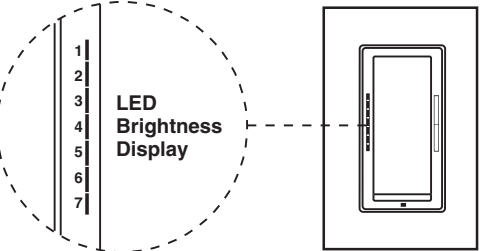
1. On the dimmer only, engage the air-gap switch by gently pulling the bottom of the push pad until it lifts completely out of the frame and a click is heard and all LED's are OFF.
2. Press push pad back into frame and hold the push pad for 7 seconds until the locator light and the top LED (LED 1) start blinking.
3. Upon releasing the push pad, the locator light will continue to blink once per second indicating the dimmer is in Mode 1, Set Minimum Brightness mode. To change the minimum Brightness level from 1-50%, use the DIM/BRIGHT Bar. This setting will automatically be saved.
4. Tap the push pad to change to Mode 2, Set Dim-Lock Level mode. The locator LED will blink twice per second. To change the current Dim-Lock level from 0-100%, use the DIM/BRIGHT Bar. If this feature is not desired, press and hold the lower half of the DIM/BRIGHT Bar until no LED is lit. This setting will automatically be saved.
5. Tap the push pad to change to Mode 3, Set Fade Rate mode. The locator LED will blink 3 times per second. To change the current Fade Rate, use the DIM/BRIGHT Bar to move the LED to the desired preset level. This setting will automatically be saved by tapping the push pad to exit programming mode.



The LED Brightness Display is separated into 7 segments. Each LED represents a preset level with LED 1 (Preset 1) located at the top and LED 7 (Preset 7) located at the bottom. Refer to chart for settings and defaults.
NOTE: The dimmer will exit program mode after 3 minutes of inactivity.

Fade Rate Presets			
Preset	LED**	Fade On	Fade Off
1*	1	Approx. 1.5s from full off	Approx. 3s from full on
2	2	No Fade	No Fade
3	3	No Fade	Approx. 3s from full on
4	4	Approx. 0.5s from full off	Approx. 3s from full on
5	5	Approx. 0.5s from full off	Approx. 1.5s from full on
6	6	Approx. 1.5s from full off	Approx. 5s from full on
7	7	Approx. 1.5s from full off	Approx. 10s from full on

* default
** LED #1 is located at the top



TROUBLESHOOTING

- **Lights Flickering**
 - Lamp has a bad connection.
 - Wires not secured firmly with wire connectors of dimmer or terminal screws of remote.
 - Verify load type is electronic low-voltage.
- **Light does not turn ON and Locator LED does not turn ON**
 - Circuit breaker or fuse has tripped.
 - Lamp is burned out.
 - Neutral not wired to Dimmer (White wire).
- **Intermittent dimmer operation**
 - Minimum load is under 40W.
- **Remote does not operate lights**
 - Ensure that total wire length does not exceed 300 ft (90 m).
 - Ensure wiring is correct.
- **Lights cycle ON and OFF**
 - Remove excess load.

For additional information, contact Leviton's Techline at 1-800-824-3005 or visit Leviton's website at www.leviton.com

Covered by one or more US & Foreign Patents and patents pending
Copyright© 2006 Leviton Manufacturing Co., Inc.
All Rights Including Trade Dress Rights Reserved

FCC COMPLIANCE STATEMENT

This equipment has been tested and found to comply with the limits for a Class B Digital Device, pursuant to Part 15 of the FCC Rules. These limits are designed to provide reasonable protection against harmful interference in a residential installation. This equipment generates, uses, and can radiate radio frequency energy and, if not installed and used in accordance with the instructions, may cause harmful interference to radio communications. However, there is no guarantee that interference will not occur in a particular installation. If this equipment does cause harmful interference to radio or television reception, which can be determined by turning the equipment OFF and ON, the user is encouraged to try to correct the interference by one or more of the following measures:

- Reorient or relocate the receiving Antenna.
- Increase the separation between the equipment and the receiver.
- Connect the equipment into an outlet on a circuit different from that to which the receiver is connected.
- Consult the dealer or an experienced radio/tv technician for help.

LIMITED 5 YEAR WARRANTY AND EXCLUSIONS

Leviton warrants to the original consumer purchaser and not for the benefit of anyone else that this product at the time of its sale by Leviton is free of defects in materials and workmanship under normal and proper use for five years from the purchase date. Leviton's only obligation is to correct such defects by repair or replacement, at its option, if within such five year period the product is returned prepaid, with proof of purchase date, and a description of the problem to **Leviton Manufacturing Co., Inc., Att: Quality Assurance Department, 59-25 Little Neck Parkway, Little Neck, New York 11362-2591**. This warranty excludes and there is disclaimed liability for labor for removal of this product or reinstallation. This warranty is void if this product is installed improperly or in an improper environment, overloaded, misused, opened, abused, or altered in any manner, or is not used under normal operating conditions or not in accordance with any labels or instructions. **There are no other or implied warranties of any kind, including merchantability and fitness for a particular purpose**, but if any implied warranty is required by the applicable jurisdiction, the duration of any such implied warranty, including merchantability and fitness for a particular purpose, is limited to five years. **Leviton is not liable for incidental, indirect, special, or consequential damages, including without limitation, damage to, or loss of use of, any equipment, lost sales or profits or delay or failure to perform this warranty obligation.** The remedies provided herein are the exclusive remedies under this warranty, whether based on contract, tort or otherwise.