

## QuickPort® Stainless Steel Wallphone Wallplate

### APPLICATION

Leviton's QuickPort Stainless Steel Wallphone Wallplates are designed with rivets to support a variety of wall-mount telephones while offering field-configurable flexibility. Single-port opening accepts QuickPort snap-in Connectors and Adapters to support a variety of commercial and residential applications. The wallplates are available in flush or recessed versions; the flush version allows the QuickPort Connector to rest flush with the wallplate; the recessed version allows the connector to extend out from the plate and fit cleanly with a telephone's slide rail mechanism.



### SPECIFICATION

The stainless steel wallphone wallplate shall meet all applicable standards: cULus listed and meet FCC part 68. It shall be constructed with Type 302 stainless steel, fit minimum rectangular NEMA openings and accept all QuickPort Snap-in Connectors and Adapters. It shall be available in recessed and flush designs.

### DESIGN CONSIDERATIONS

- Accepts all QuickPort Snap-in Connectors and Adapters
- Stainless steel plate is durable and corrosion resistant
- Fits minimum rectangular NEMA openings.
- Available in recessed and flush designs.

### STANDARDS COMPLIANCE

Meets all applicable standards: cULus listed; complies with TIA/EIA-570-A.

### PHYSICAL SPECIFICATIONS

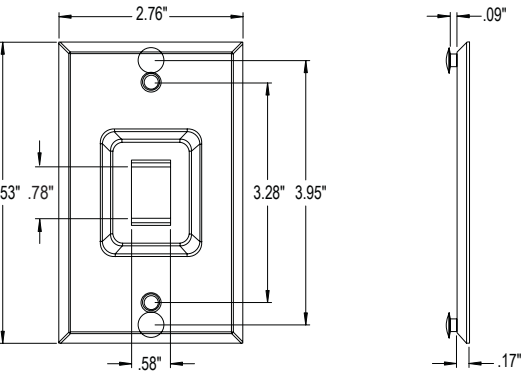
Dimensions: 4.53"H x 2.76"W x 0.17"D  
Materials: Type 302 Stainless Steel  
Capacity: Single-gang, 1-port Version  
(flush and recessed)

### WARRANTY INFORMATION

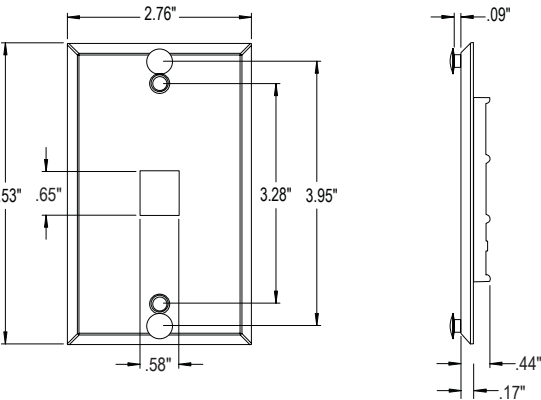
For a copy of Leviton product warranties, visit [www.leviton.com](http://www.leviton.com).

**ELECTRONIC FILES**

For CAD files, typical specs, or technical drawings (.DXF, .DWG), visit [www.leviton.com](http://www.leviton.com).



**4108W-1SP**



**4108W-0SP**

4108W-xSP

**PART NUMBERS**

Description	Part No.
QuickPort Single-gang Wallphone Wallplate (Recessed, 1-Port)	4108W-1SP
QuickPort Single-gang Wallphone Wallplate (Flush, 1-Port)	4108W-0SP

