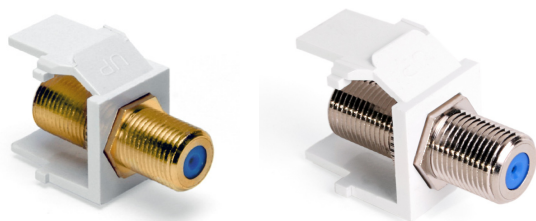


## QuickPort® F-Type Adapters

### APPLICATION

Nickel or gold-plated female-to-female connector features screw-on front and rear connections. Pass through design applications: TV, VCR, DVD, satellite, and home theater. Cable: coaxial cable terminated with "F" plugs. QuickPort F-Type Adapters snap into any QuickPort housing, including flush and surface mount outlets, Multimedia Outlet System (with adapter), Decora® Inserts, patch panels, and patch blocks.



### SPECIFICATION

The modules for coaxial cable shall be individual QuickPort snap-in style female-to-female bulkhead adapters, and shall fit all other installed telecommunications wallplates, outlets and field-configurable patch panels and patch blocks. Bulkhead modules shall be available in multiple colors to match the housings or provide unique color-coding for port I.D. Modules shall be UL listed. All plastics used in construction of the module bodies shall be fire-retardant with a UL flammability rating of 94V-0.

### FEATURES

- Female-female adapter for quick screw-on connections
- 360 degree gold plated seizing pin provides clearest signal transmission
- Works with all F-connectors and coax varieties

### DESIGN CONSIDERATIONS

- F-type connector works for all coax applications
- QuickPort bulkhead modules snap into any QuickPort housing, including flush and surface mount outlets, Multimedia Outlet System (with adapter), patch panel, and patch blocks
- Check clearance behind proposed location of bulkhead module, to ensure space for proper bend-radius

### STANDARDS COMPLIANCE

Meets or exceeds all applicable standards

Bulkhead Modules are cULus Listed

Society of Cable Telecommunications Engineers (SCTE) Compliant

### PHYSICAL SPECIFICATIONS

Dimensions: .64"h x .58"w x 1.24"d

Materials: Zinc die-cast body with machined threads

Insulation: Polypropylene

### WARRANTY INFORMATION

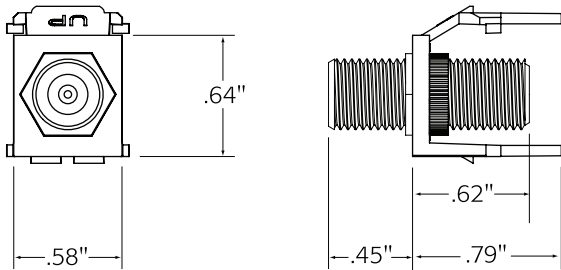
For a copy of Leviton product warranties, visit [www.leviton.com](http://www.leviton.com).

### PERFORMANCE SPECIFICATIONS

Frequency Range	DC - 3.0 GHz (Nickel) DC - 3.0 GHz (Gold)
Insertion Loss	≤ 0.2 dB @ 3.0 GHz (Nickel) ≤ 0.2 dB @ 3.0 GHz (Gold)
Return Loss	≥ 26 dB @ 3.0 GHz (Nickel) ≥ 26 dB @ 3.0 GHz (Gold)
Contact Resistance	< 4 Milliohms
Holding Force	> 160 Grams Initial > 120 Grams after Insertion

## ELECTRONIC FILES

For CAD files, Typical specs, or Dimensional Line Art. (.DXF, .DWG), visit [www.leviton.com](http://www.leviton.com).



41084-FxF 40831-0Bx

## PART NUMBERS

Description	Part No.
F-Type Adapter, Nickel Plated, white	41084-FWF
F-Type Adapter, Nickel Plated, Ivory	41084-FIF
F-Type Adapter, Nickel Plated, Almond	41084-FAF
F-Type Adapter, Nickel Plated, Grey	41084-FGF
F-Type Adapter, Nickel Plated, Black	41084-FEF
F-Type Adapter, Nickel Plated, Light Almond	41084-FTF
F-Type Adapter, Gold Plated, White	40831-0BW
F-Type Adapter, Gold Plated, Ivory	40831-0BI
F-Type Adapter, Gold Plated, Almond	40831-0BA
F-Type Adapter, Gold Plated, Light Almond	40831-0BT