

INSTALLATION, MAINTENANCE AND TROUBLE SHOOTING OF THE WOODFORD MODEL S4H HYDRANT

www.woodfordmfg.com or call 1-800-621-6032



INSTALLATION

The S4H is designed to be 28 1/2" from grade to the hose connection outlet. The reservoir of the S4H extends below bury depth (frostline). The supply line should be installed deeper than normal bury depth (see overall bury depth schedule).

For convenient maintenance, a shut-off valve ahead of each hydrant is recommended.

WARNING: FLUSH SUPPLY LINE BEFORE CONNECTING HYDRANT.

With the hydrant completely assembled, make the connection to the supply line, tightening with a pipe wrench on the inlet casting (#32).

The bottom of the casing cover (#25) must be 4 1/2" above grade to allow easy access to remove the three nuts.

MAINTENANCE

To remove hydrant from reservoir:

1. Turn off water supply.
2. Remove the three nuts located under the casing cover (#25).
3. Pull hydrant straight up and remove from the reservoir.

To reinstall:

1. Clean and inspect the two venturi O-rings (#36). Replace O-rings if damaged. Lubricate with silicone grease or other non-toxic lubricant that is safe for rubber.
2. Clean cup gasket (#26). Replace if damaged.
3. Insert hydrant in the reservoir. Align the studs with the holes in the flange. Replace and tighten the nuts.
4. Turn on water supply and check for leaks.

TROUBLE SHOOTING

1. WATER LEAKS FROM UNDERNEATH CASING COVER WHILE HYDRANT IS ON.

Tighten nuts (#30) under casing cover (#25). If leak persists, remove hydrant from reservoir and inspect cup gasket (#26) for cracks or damage. Remove cup gasket and measure from top of reservoir flange (#28) to top of reservoir (#31). Dimension should be 1/2". If necessary, adjust flange by threading flange on reservoir. Reinstall hydrant.

2. WATER LEAKS FROM DIVERTER, OR FILLS RESERVOIR, WHILE HYDRANT IS OFF.

Check linkage adjustment. With the head cover off, lift handle and check if the linkage (#1-5) has a small amount of play and is not binding. Adjust lock nut (#15) and swivel nut (#14) down to increase play. If hydrant continues to leak, valve plug (#37) may be fouled or damaged. Remove hydrant from the reservoir. Hold or lock the handle down in an open position. Remove snap ring (#40), screen (#39) and valve plug guide (#38). Unthread valve plug (#37) with screwdriver. Check for damage or obstruction. Check venturi O-rings (#36) for damage. Reinstall parts and hydrant.

CAUTION

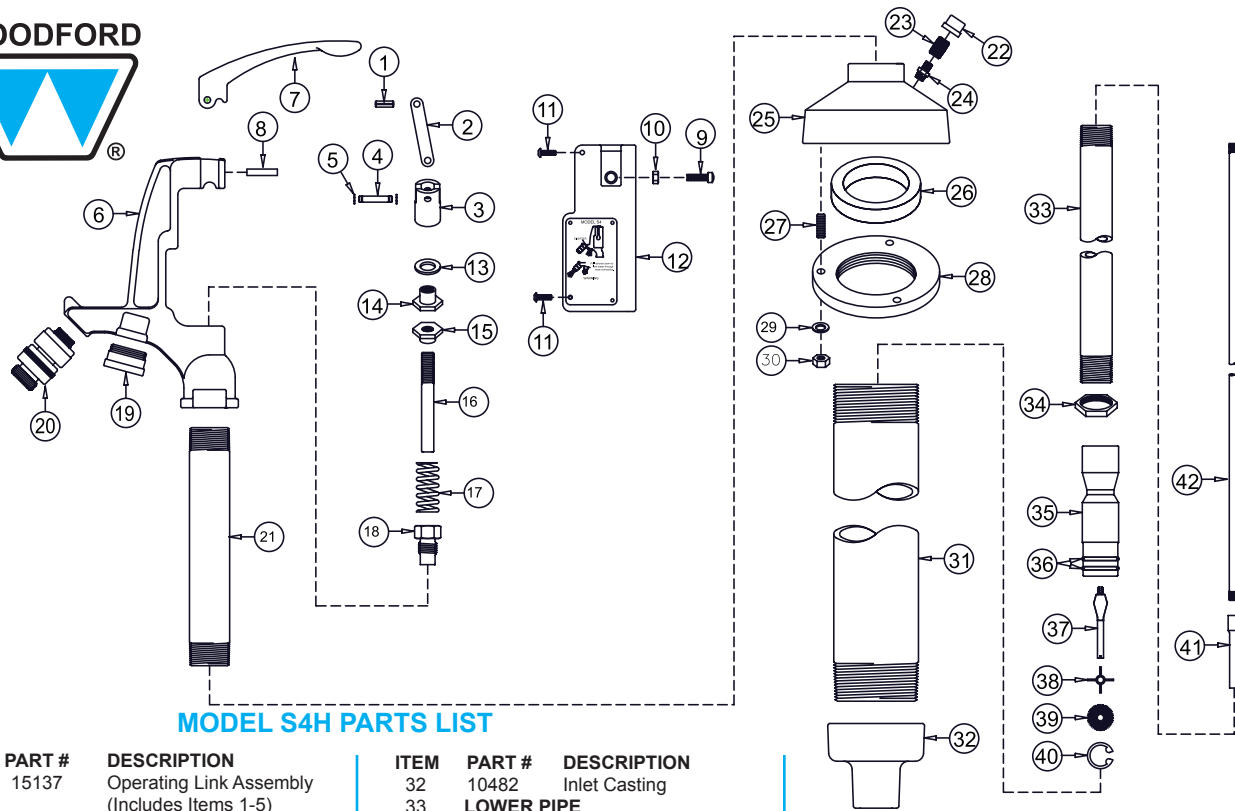
A compressed spring can be dangerous. Be careful not to get fingers caught in linkage parts if spring were to suddenly expand.

OPERATION

The hydrant shall be run for a minimum of 30 seconds before user draws for drinking water.

FOR WINTER USE: The hydrant must be operated at full flow, through the diverter, for a minimum of 30 seconds before and after each use to drain the hydrant and prevent freezing.

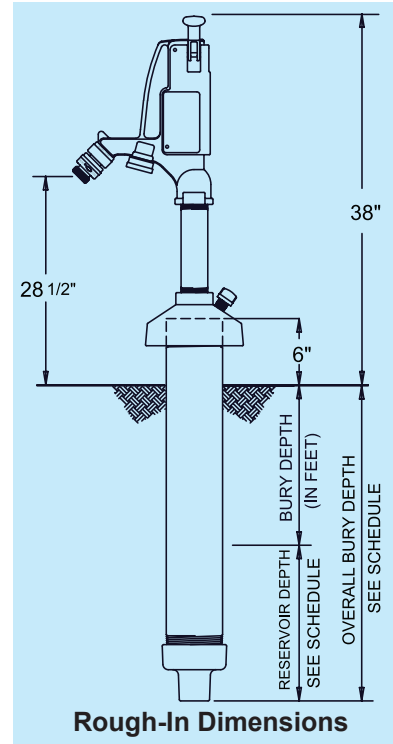
WOODFORD



MODEL S4H PARTS LIST

ITEM	PART #	DESCRIPTION
	15137	Operating Link Assembly (Includes Items 1-5)
1	50040	Roll Pin
2	10375	Clevis Link
3	10376	Clevis
4	10377	Clevis Pin
5	10319	E-Ring (2)
6	10552	S4H Head
7	10553	Handle
8	10551	Handle Pin
9	10328	Stop Screw
10	10329	Jam Nut
11	10336	Head Cover Screws (4)
12	15240	Head Cover
13	10307	Washer
14	10308	Swivel Nut
15	10494	Lock Nut
16	10465	Operating Rod Extension
17	10489	Spring
18	15232	Packing Nut Assembly (Includes O-Ring-10464)
19	15220	Diverter Assembly
20	37HF-BR	37HF Backflow Preventer
21	10496	Upper Pipe
22	10555	Vent Cap
23	10556	3/8" Pipe Nipple
24	15136	Snifter Valve
25	10554	Casing Cover
26	10491	Cup Gasket
27	10534	Threaded Stud (3)
28	10483	Reservoir Flange
29	10332	Flat Washer (3)
30	10331	Hex Nut (3)
31		RESERVOIR PIPE (Bury Depth & Length)
	10511	1' Bury (27 7/16" Long)
	10512	2' Bury (41 1/16" Long)
	10513	3' Bury (54 15/16" Long)
	10514	4' Bury (68 7/16" Long)
	10515	5' Bury (82 5/16" Long)
	10516	6' Bury (95 15/16" Long)
	10517	7' Bury (109 11/16" Long)

ITEM	PART #	DESCRIPTION
32	10482	Inlet Casting
33		LOWER PIPE (Bury Depth & Length)
	10501	1' Bury (25 1/8" Long)
	10502	2' Bury (38 3/4" Long)
	10503	3' Bury (52 1/2" Long)
	10504	4' Bury (66 1/8" Long)
	10505	5' Bury (80" Long)
	10506	6' Bury (93 5/8" Long)
	10507	7' Bury (107 3/8" Long)
34	10334	1" Lock Nut
35	15233	Venturi Assembly
36	10321	Venturi O-Rings (2)
37	15134	Valve Plug
38	10322	Valve Plug Guide
39	10469	Inlet Screen
40	10323	Snap Ring #3000
41	10497	Coupling
42		OPERATING PIPE (Bury Depth & Length)
	10521	1' Bury (47 1/8" Long)
	10522	2' Bury (60 3/4" Long)
	10523	3' Bury (74 1/2" Long)
	10524	4' Bury (88 1/8" Long)
	10525	5' Bury (102" Long)
	10526	6' Bury (115 5/8" Long)
	10527	7' Bury (129 3/8" Long)



Rough-In Dimensions

Bury Depth	1'	2'	3'	4' *	5' *	6' *	7' *
Reservoir Depth	10 1/2"	11 7/8"	13 1/4"	14 5/8"	16"	17 3/8"	18 3/4"
Overall Bury Depth	22 1/2"	35 7/8"	49 1/4"	62 5/8"	76"	89 3/8"	102 3/4"
Weight (lbs)	36	40	45	49	54	58	62

* Must ship by truck line due to length.

For more information contact...

WOODFORD MANUFACTURING COMPANY

2121 Waynoka Road, Colorado Springs, Colorado 80915 • Phone: (800) 621-6032 • Fax: (800) 765-4115

To view our complete product line visit: www.woodfordmfg.com or email: sales@woodfordmfg.com

A Division Of WCM Industries, Inc.