

TECH-NOTE



For more information contact...

WOODFORD MANUFACTURING COMPANY

2121 Waynoka Road, Colorado Springs, Colorado 80915 • Phone: (719) 574-1101 • Fax: (719) 574-7621

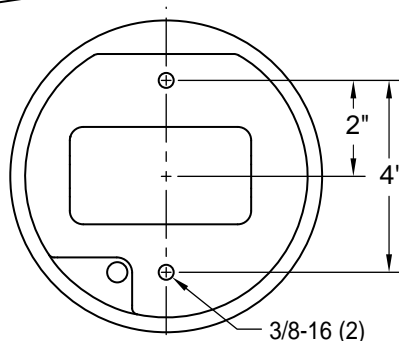
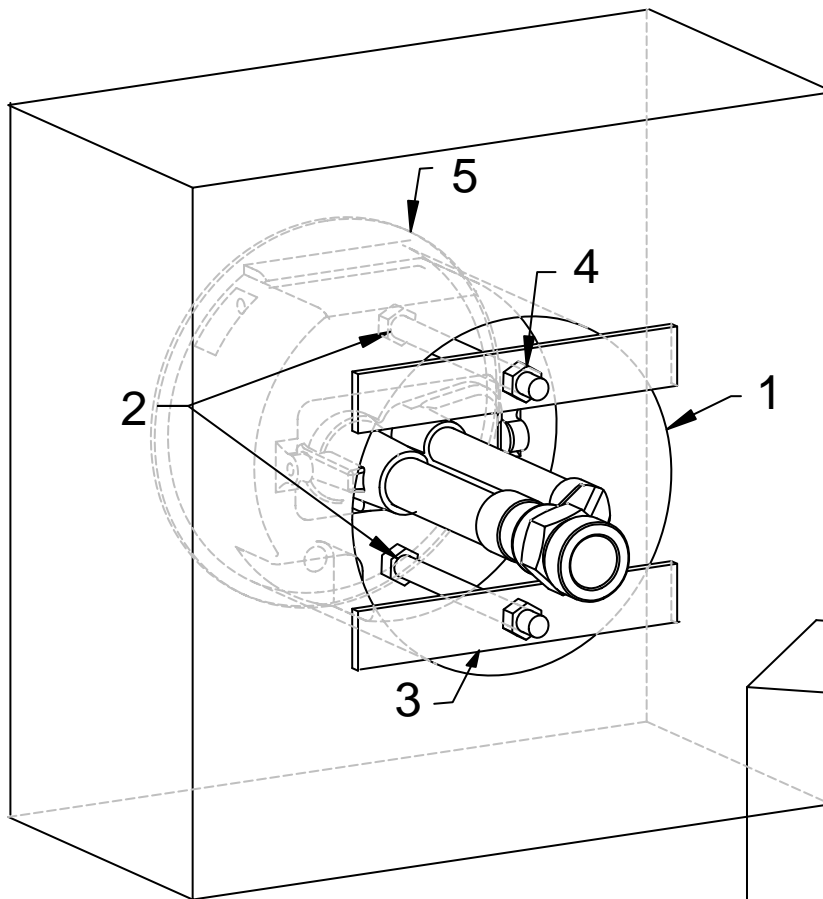
To view our complete product line visit: www.woodfordmfg.com or email: sales@woodfordmfg.com

A Division Of WCM Industries, Inc.

04/10 Rev. 2

RB 65 & RB 67 Round Box Installation Instructions

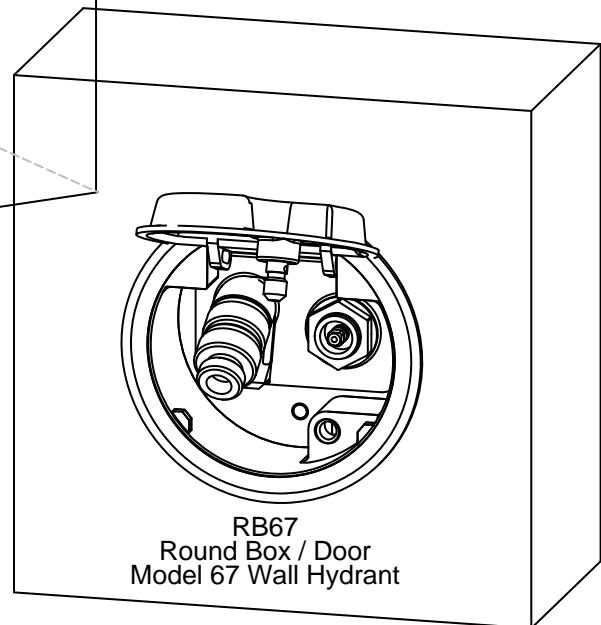
Round Box Patent No. US D470,915 S



Mounting Hole Detail

Suggested installation through concrete wall:

1. Using a 6" core drill, locate and core drill a 6" diameter hole through wall.
2. Cut two lengths of 3/8-16 threaded rod long enough to protrude 1" through the back of the hole when box is installed. Spin one 3/8 back-up nut onto each rod to lock rods in place against box. Screw rods into provided tapped holes located in back of round box then tighten back-up nuts.
3. Make two back-up plates from available metal bar or angle to span 6" hole.
4. Set round box assembly in hole. Install back-up plates and draw-up loosely with 3/8 nuts.
5. Position and plumb unit in hole. Tighten back-up plate nuts to complete installation.



RB67
Round Box / Door
Model 67 Wall Hydrant