



## Freezeless Sanitary Water Connector Thermaline<sup>®</sup>

The Thermaline<sup>®</sup> is a compact unit especially designed to provide water service to mobile homes. It is ideal wherever a freezeless sanitary tight line installation is needed, such as, waterers for livestock.

The Thermaline<sup>®</sup> is protected from freezing by a bonded polyurethane foam insulation permanently molded in high strength plastic casing, and a 15 watt (110-120v) portable insert heater, which costs about a penny a day to operate even at 50° below zero.

The heater can be inserted and removed from the Thermaline<sup>®</sup> without interrupting the water service.

Galvanized steel riser pipe with coal-tar coating on lower end, brass fittings, structural foam protective surface cover, and extra large cushion valve all combine to make the Thermaline<sup>®</sup> water connector virtually maintenance free.

When not in use, wheel handle at surface level shuts off water below the frost line. Water above the frost line can be removed completely with forced air or suction pump.

### SPECIFICATIONS:

**U.S. Patent Number** - 3,913,602

**HEAD** - Brass casting with 3/4" N.P.T. outlet.

**COVER** - Pressure molded polypropylene rigid structural foam.

**HEATER** - 15 watt (110-120V) portable insert heater with grounded metal alloy sheath and 3 prong standard plug.

**RISER PIPE** - 1' galvanized steel pipe.

**Optional** - 1" brass pipe

**OPERATING PIPE** - 1/4" galvanized steel pipe.

**Optional** - 1/4" brass pipe.

**INSULATION** - Molded polyurethane foam.

**CASING** - 3 1/4" O.D. plastic tubing.

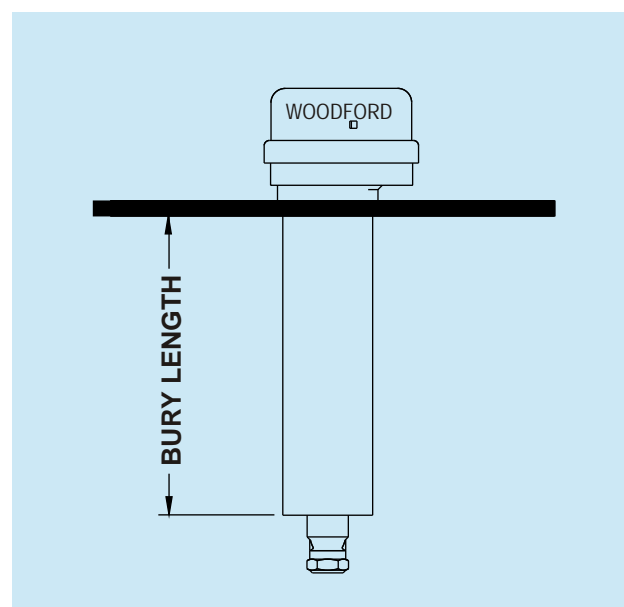
**VALVE** - Permanent type brass valve body with large hemispherical seating surface. 3/4" N.P.T. inlet.

### SHIPPING WEIGHT -

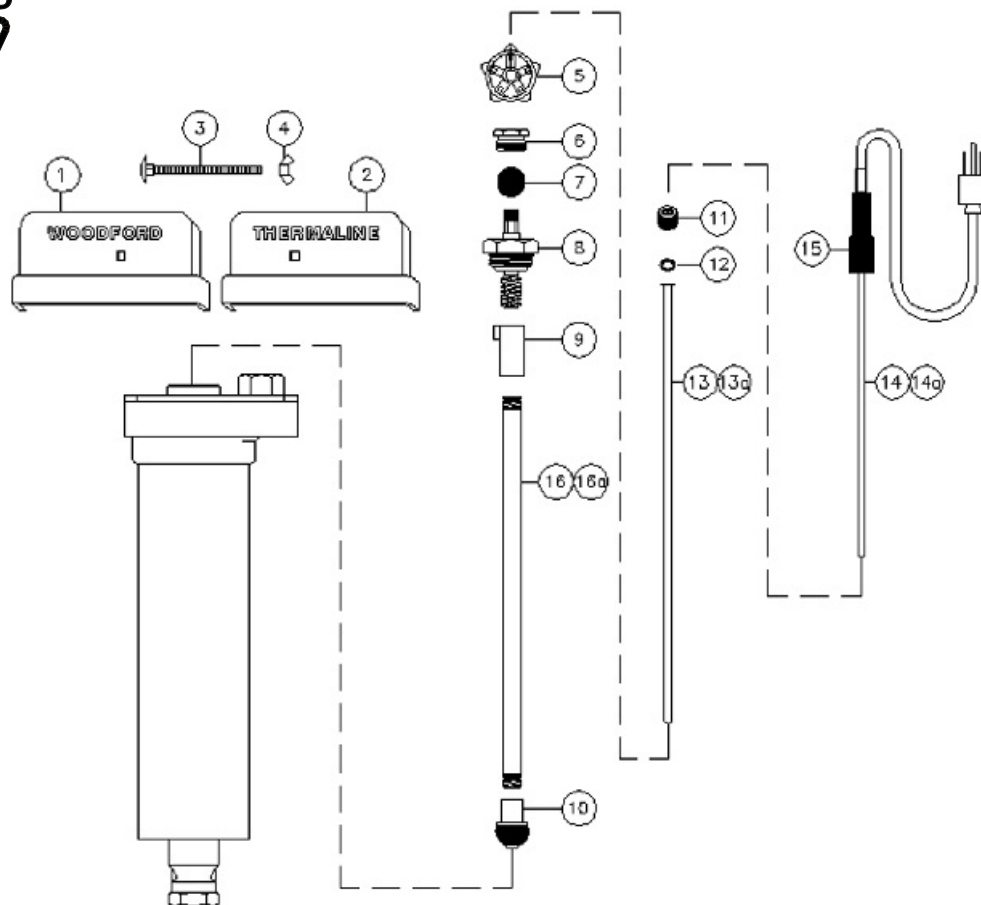
Bury Depth (ft)	1	2	3	4	5	6	7
Weight (lbs)	6.5	9	11.5	14	16.5	19	21.5

### Specify as follows:

"Water Connectors shall be Woodford Thermaline\_\_\_\_\_ft. Bury, with 15 watt portable insert heater, bonded polyurethane insulation, sanitary tight-line design."



**When ordering, specify model and bury depth.**

**WOODFORD**

### THERMALINE PARTS LIST

ITEM	PART #	DESCRIPTION	ITEM	PART #	DESCRIPTION
1	80055	Cover, Woodford	16		<b>OPERATING PIPE (For Brass Head)</b>
2	80056	Cover, Thermaline	80081		1' Bury (11 1/8" Long)
3	80073	Carriage Bolt	80082		2' Bury (23 1/8" Long)
4	80068	Wing Nut	80083		3' Bury (35 1/8" Long)
5	80013	Handle (Brass)	80084		4' Bury (47 1/8" Long)
6	80005	Packing Nut	80085		5' Bury (59 1/8" Long)
7	80008	Packing	80086		6' Bury (71 1/8" Long)
8	85063	Head Nut Assembly	80087		7' Bury (83 1/8" Long)
9	80066	Yoke Nut	16a		<b>OPERATING PIPE (For Cast Iron Head)</b>
10	85015	Combination Valve Assembly	80031		1' Bury (9 3/8" Long)
11	80062	Heater Well Thumb Nut	80032		2' Bury (21 3/8" Long)
12	80063	Heater Well Washer	80033		3' Bury (33 3/8" Long)
13	85002	2' Heater Well Assembly (Includes Item 12)	80034		4' Bury (45 3/8" Long)
13a	85001	1' Heater Well Assembly (Includes Item 12) For 2' bury length and shorter.	80035		5' Bury (57 3/8" Long)
14	85062	2' Heater Assembly (Includes Item 15)	80036		6' Bury (69 3/8" Long)
14a	85061	1' Heater Assembly (Includes Item 15) For 2' bury length and shorter.	80037		7' Bury (81 3/8" Long)
15	80061	Heater Cover			

RK-THERM Repair Kit (Includes Items 5-12)

#### NOTE:

Old style heaters originally used in Thermalines with cast iron covers are replaced by items 11, 13 and 14

*For more information contact...*

## WOODFORD MANUFACTURING COMPANY

2121 Waynoka Road, Colorado Springs, Colorado 80915 · Phone: (719) 574-1101 · Fax: (719) 574-7621

To view our complete product line visit: [www.woodfordmfg.com](http://www.woodfordmfg.com)