



ADA Compliant Self-Closing

The Model S4H is an automatic draining, sanitary, frost proof Yard Hydrant, with ASSE 1052 double check backflow preventer. This hydrant is designed for use in public areas such as campgrounds and parks or any location where potable water is required.

Unlike conventional hydrants which drain the water into the ground, the Model S4H employs a reservoir below frost line to contain the water. The hydrant is completely sealed to prevent surface and ground water from entering reservoir or service line. The valve, with its unique venturi design, removes the stored water along with the water being used.

The Model S4H is equipped with a diverter spout, which allows the hydrant to be operated independently from the backflow preventer. When the hydrant is to be used with a hose, the diverter sleeve is pulled down during flow and water is automatically diverted to the backflow preventer hose connection. The diverter will work with or without a hose attached to the backflow preventer and will automatically release any time the hydrant is shut off.

An important feature of the S4H is easy maintenance. The entire working portion of the hydrant can be removed from the reservoir without any excavation.

SPECIFICATIONS:

HOSE CONNECTION BACKFLOW PREVENTER

- NIDEL® Model 37HF
- ASSE 1052 Approved
- Field Testable (see instruction sheet)
- Two Check Valves

ADA COMPLIANT - Meets ADA requirements for height and 5 lbs. Max operating force.

PATENT - U.S. Patent number 5246028 (Additional Patents Pending)

FEMALE INLET - 1" N.P.T.

FINISH - Painted Forest Service brown.

MIN PRESSURE - 20 psi

MAX PRESSURE - 100 psi

MAX TEMPERATURE - 120° F

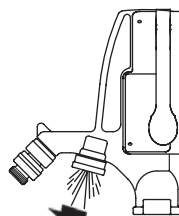
FLOW RATES (GPM)	PSI	DIVERTER	BFP
20	7.0	1.5	
30	9.0	3.0	
40	10.0	5.0	
50	11.0	6.0	
60	12.0	7.0	
70	13.0	8.0	
80	14.0	9.0	
90	14.5	9.5	
100	15.0	10.0	

When ordering, specify bury depth.

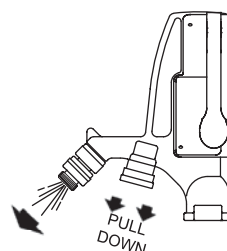
WOODFORD



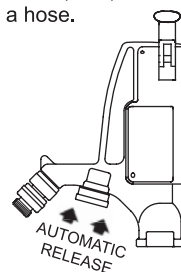
Backflow Protected Automatic Draining Freezeless, Self Closing Sanitary Yard Hydrant Model S4H



When the hydrant is opened to an ON position, water will flow through the diverter spout.



By pulling down on the diverter sleeve during flow, water will be diverted through the backflow preventer (BFP), and allow use with a hose.



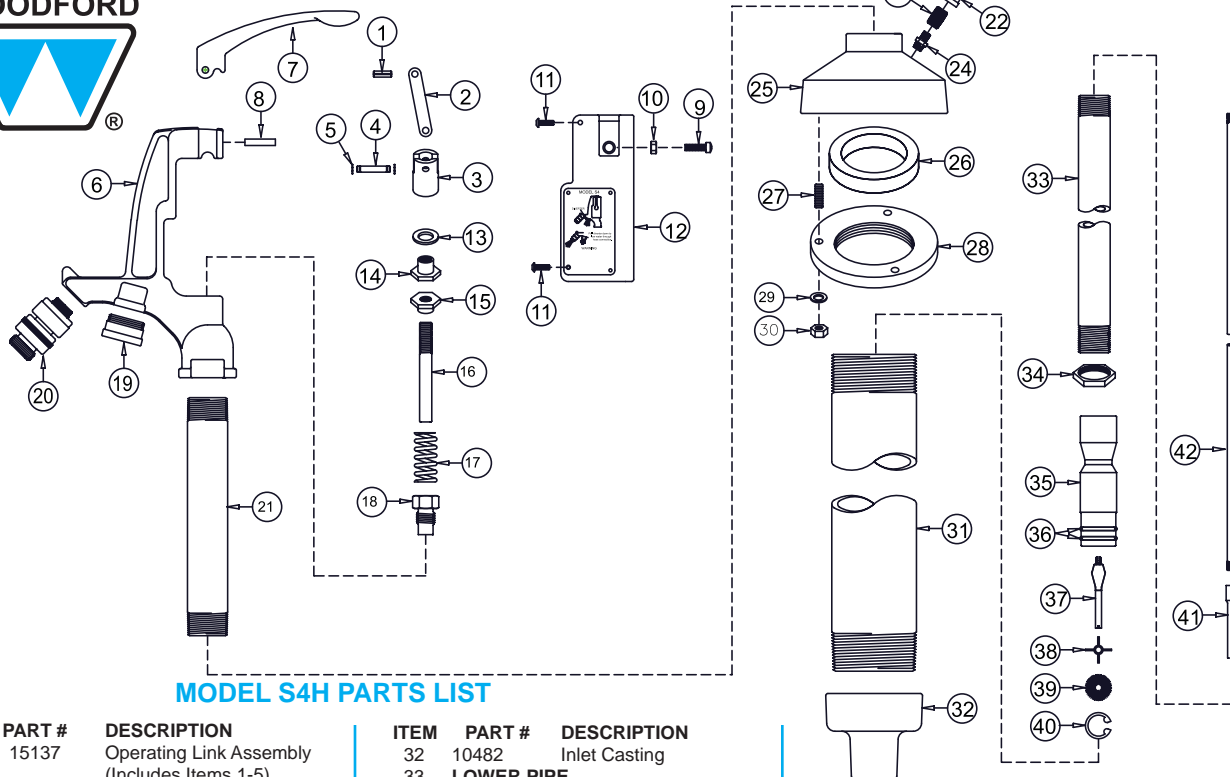
When the hydrant is closed to an OFF position, the diverter will automatically release, allowing the hydrant to drain into the reservoir. The hydrant will drain even if a pressurized or non pressurized hose is attached.



NOTICE

FOR WINTER USE: The hydrant must be operated at full flow, through the diverter, for a minimum of 30 seconds before and after each use to drain the hydrant and prevent freezing.

WOODFORD



MODEL S4H PARTS LIST

ITEM PART # DESCRIPTION
15137 Operating Link Assembly
(Includes Items 1-5)

- 1 50040 Roll Pin
- 2 10375 Clevis Link
- 3 10376 Clevis
- 4 10377 Clevis Pin
- 5 10319 E-Ring (2)
- 6 10552 S4H Head
- 7 10553 Handle
- 8 10551 Handle Pin
- 9 10328 Stop Screw
- 10 10329 Jam Nut
- 11 10336 Head Cover Screws (4)
- 12 15240 Head Cover
- 13 10307 Washer
- 14 10308 Swivel Nut
- 15 10494 Lock Nut
- 16 10465 Operating Rod Extension
- 17 10489 Spring
- 18 15232 Packing Nut Assembly
(Includes O-Ring-10464)
- 19 15220 Diverter Assembly
- 20 37HF-BR 37HF Backflow Preventer
- 21 10496 Upper Pipe
- 22 10555 Vent Cap
- 23 10556 3/8" Pipe Nipple
- 24 15136 Sniffer Valve
- 25 10554 Casing Cover
- 26 10491 Cup Gasket
- 27 10534 Threaded Stud (3)
- 28 10483 Reservoir Flange
- 29 10332 Flat Washer (3)
- 30 10331 Hex Nut (3)

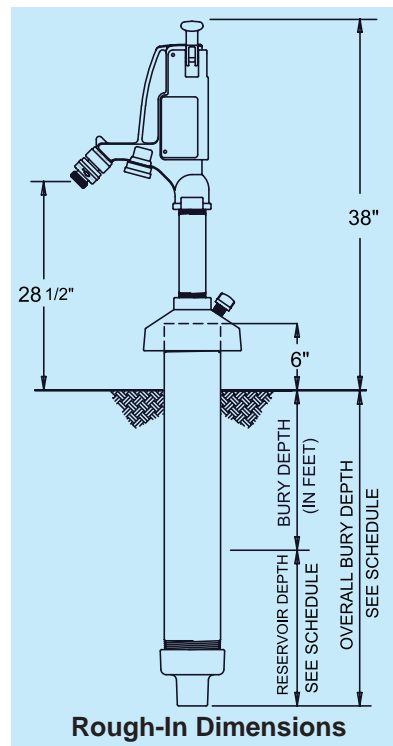
**RESERVOIR PIPE
(Bury Depth & Length)**

- 10511 1' Bury (27 7/16" Long)
- 10512 2' Bury (41 1/16" Long)
- 10513 3' Bury (54 15/16" Long)
- 10514 4' Bury (68 7/16" Long)
- 10515 5' Bury (82 5/16" Long)
- 10516 6' Bury (95 15/16" Long)
- 10517 7' Bury (109 11/16" Long)

ITEM PART # DESCRIPTION
32 10482 Inlet Casting
33 **LOWER PIPE**
(Bury Depth & Length)
10501 1' Bury (25 1/8" Long)
10502 2' Bury (38 3/4" Long)
10503 3' Bury (52 1/2" Long)
10504 4' Bury (66 1/8" Long)
10505 5' Bury (80" Long)
10506 6' Bury (93 5/8" Long)
10507 7' Bury (107 3/8" Long)

- 34 10334 1" Lock Nut
- 35 15233 Venturi Assembly
- 36 10321 Venturi O-Rings (2)
- 37 15134 Valve Plug
- 38 10322 Valve Plug Guide
- 39 10469 Inlet Screen
- 40 10323 Snap Ring #3000
- 41 10497 Coupling

**42 OPERATING PIPE
(Bury Depth & Length)**
10521 1' Bury (47 1/8" Long)
10522 2' Bury (60 3/4" Long)
10523 3' Bury (74 1/2" Long)
10524 4' Bury (88 1/8" Long)
10525 5' Bury (102" Long)
10526 6' Bury (115 5/8" Long)
10527 7' Bury (129 3/8" Long)



Rough-In Dimensions

Bury Depth	1'	2'	3'	4' *	5' *	6' *	7' *
Reservoir Depth	10 1/2"	11 7/8"	13 1/4"	14 5/8"	16"	17 3/8"	18 3/4"
Overall Bury Depth	22 1/2"	35 7/8"	49 1/4"	62 5/8"	76"	89 3/8"	102 3/4"
Weight (lbs)	36	40	45	49	54	58	62

* Must ship by truck line due to length.

For more information contact...

WOODFORD MANUFACTURING COMPANY

2121 Waynoka Road, Colorado Springs, Colorado 80915 • Phone: (800) 621-6032 • Fax: (800) 765-4115

To view our complete product line visit: www.woodfordmfg.com or email: sales@woodfordmfg.com

A Division Of WCM Industries, Inc.