



The Model MB24 & MB26 Modular Box systems are designed to securely contain a Woodford Model 24 or 26 wall faucet in mild climate area commercial buildings.

The MB24 includes a light weight, high impact, composite box that is stubbed out of a frame or masonry wall. After the wall is finished, a heavy 14 gauge stainless steel door and fascia assembly is screwed into the box to create a durable, secure access and an attractive front.

Two lock styles are available:

- Loose Tee Key (requires a furnished Tee Key to engage a recessed square lock stem to operate)
- Key Cylinder Lock (with (2) keys)

Complete the Modular Box system by choosing a reliable Woodford Model 24P or 26P with either 1/2" or 3/4" NPT inlet options. *These faucets are intended for irrigation purposes in mild climate areas.*

SPECIFICATIONS:

- NIDEL® Model 34HF Anti Siphon Vacuum Breaker
- 3/4" male hose thread
- ASSE Standard 1011 approved
- Listed by IAPMO
- Canadian Standards Association
- No spray back



Model
24P-1/2 or 24P-3/4



- 50HF Backflow Preventer *Pat. Pend.*
- ASSE 1052 Approved
- Listed by IAPMO
- Field Testable
- Two Independent Check Valves
- Drains automatically when hose is removed
- No spray back



Model
26P-1/2 or 26P-3/4

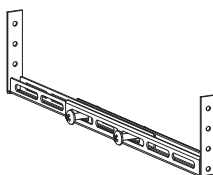


FEATURES Common to all faucets:

- Chrome exterior finish
- EPDM packing prevents leaking
- Adjustable packing nut brass nut with deep stem guard
- Standard "O" size seat washer
- Standard polycarbonate wheel handle and loose tee key
 - Optional metal wheel handle
- Max Pressure: 125 p.s.i.
- Max Temperature: 120° F

RK-Bracket - Sold Separately

Bracket may be used to mount or support the box in a stud wall. Hole centers are provided on back of box for drilling (2) 9/32" holes. Bracket extends from 10" to 19".



Mild Climate Wall Faucets Modular Box **MB24 & MB26**



All MB24 models include Model 24 Faucet, Composite Box, Stainless Steel Door & Fascia

MB24-1/2	Includes Tee Key Lock
MB24-3/4	Includes Tee Key Lock
MB24-1/2-K	Includes Key Cylinder Lock
MB24-3/4-K	Includes Key Cylinder Lock

All MB26 models include Model 26 Faucet, Composite Box, Stainless Steel Door & Fascia

MB26-1/2	Includes Tee Key Lock
MB26-3/4	Includes Tee Key Lock
MB26-1/2-K	Includes Key Cylinder Lock
MB26-3/4-K	Includes Key Cylinder Lock

Modular Box Components

See Rough-In Dimensions on reverse side.

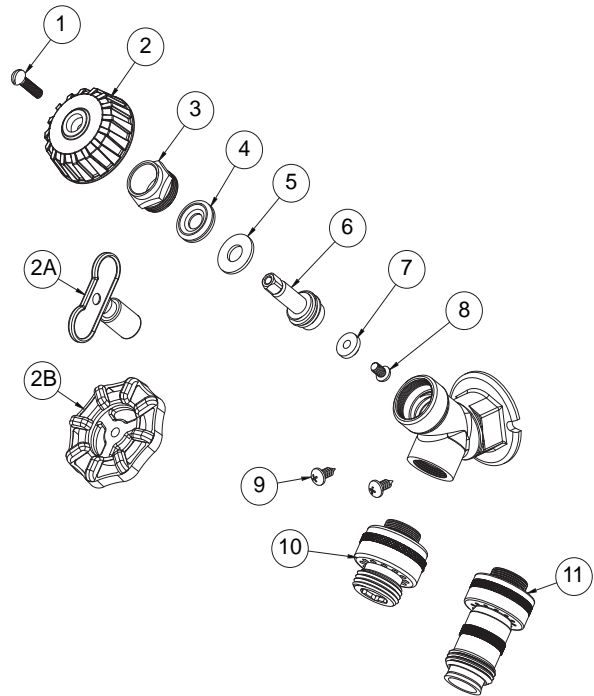


**For Installation Instructions go to
www.woodfordmfg.com or call 1-800-621-6032**



MODEL MB24 & MB26 PARTS LIST

ITEM	PART#	DESCRIPTION
1	30121	Handle Screw - Nickel
2	30120	Wheel Handle - Clear
2A	50009	Tee Key
2B	30106	Wheel Handle - Metal
3	30109	Packing Nut - chrome
4	30247	EPDM Packing
5	30105	Packing Support Washer
6	30104	Operating Stem
7	30008	Washer
8	30009	Washer Screw
9	30151	Fascia Screws (2)
10	34HF-CH	34HF Vacuum Breaker for Model 24
11	50HF-CH	50HF Backflow Preventer for Model 26
	RK-24	Chrome Repair Kit (Includes items 1-8)



MB24BX



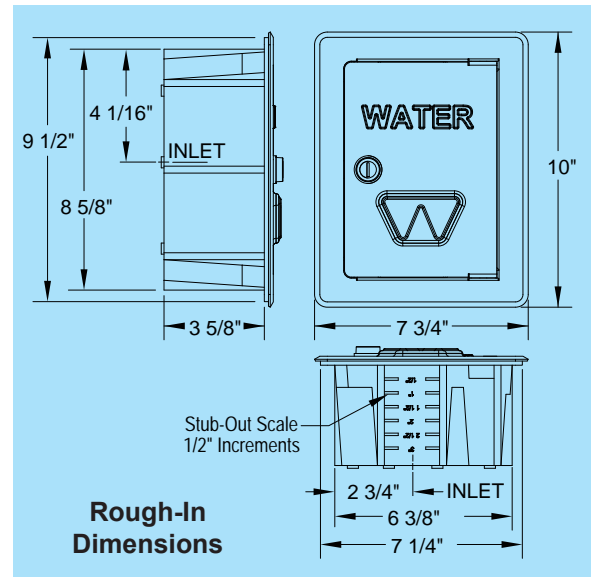
MB24BX-K

MB24BX & MB24BX-K models include:
Composite Box, Stainless Steel Door & Fascia *Only*

MB24BX Includes Tee Key Lock

MB24BX-K Includes Key Cylinder Lock

- Shipped in individual cartons
- Shipping Weight: 3 lbs-3 oz



Replaceable Stainless Steel Door & Fascia RK's

RK-24MBDR & RK-24MBDR-K models include:
Stainless Steel Door & Fascia *Only*

RK-24MBDR Includes Tee Key Lock

RK-24MBDR-K Includes Key Cylinder Lock

- Shipped in individual cartons
- Shipping Weight: 2 lbs-3 oz



RK-24MBDR



RK-24MBDR-K

Manufactured under one or more of the following patents and patents pending: U.S. Patents: 3,414,001; 3,543,786; 4,178,956; 4,316,481; D216,790; D216,791; D277,365; D277,366; Canada Patents: 822,458; 852,529; 865,995

For more information contact...

WOODFORD MANUFACTURING COMPANY

2121 Waynoka Road, Colorado Springs, Colorado 80915 • Phone: (800) 621-6032 • Fax: (800) 765-4115

To view our complete product line visit: www.woodfordmfg.com or email: sales@woodfordmfg.com

A Division Of WCM Industries, Inc.