

PVC White & PVC Gray Repair Compression Couplings



(S113) Socket x Socket



- | Telescoping Design with Nut & EPDM Compression Gasket Seal
- | Socket x Socket or Spigot x Socket Configuration
- | 2-1/2" - 4" Pressure Rated to 200 PSI @ 73°F (23°C)
- | 6" Pressure Rated to 150 PSI @ 73°F (23°C)
- | Available in PVC White and PVC Gray
- | NSF Certified for Potable Water Use

(S114) Spigot x Socket

PVC White

Part Number	Size	Std Pk	Mstr Ctn	Disc Code	Price Each
EPDM Gasket, Soc x Soc					
S113-30	3	6	0	025	44.26

PVC Gray

Part Number	Size	Std Pk	Mstr Ctn	Disc Code	Price Each
EPDM Gasket, Soc x Soc					
S113E-25G	2-1/2	10	0	025	41.67
S113E-60G	6	1	0	025	224.17

PVC White

Part Number	Size	Std Pk	Mstr Ctn	Disc Code	Price Each
EPDM Gasket, Spig x Soc					
S114-25	2-1/2	10	0	025	35.44
S114-60	6	1	0	025	190.55

PVC Gray

Part Number	Size	Std Pk	Mstr Ctn	Disc Code	Price Each
EPDM Gasket, Spig x Soc					
S114E-25G	2-1/2	10	0	025	41.67

Made in the U.S.A.

NOT FOR USE WITH COMPRESSED AIR OR GAS

Thursday, January 13, 2011 7:36:56 AM

Progressive Products from Spears® Innovation and Technology

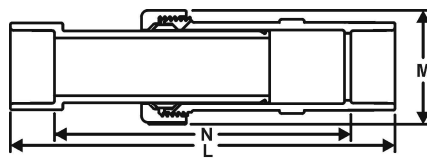
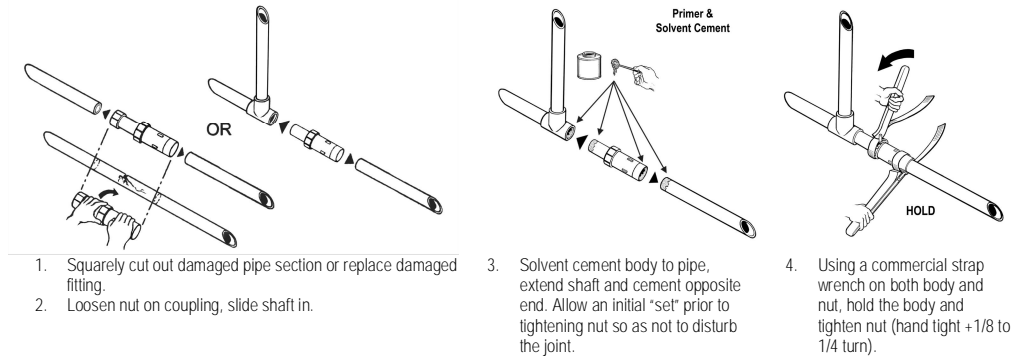
Page 22



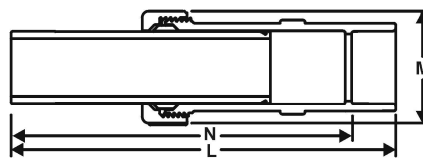
PVC White & PVC Gray Repair Compression Couplings

Versatile Repair Capability

Spears® Repair Couplings provide a variety of system repair and alteration solutions. Use Socket x Socket configurations for quick pipe damage repair. Spigot x Socket configurations are excellent for lateral and riser add-ons, damaged fitting replacement, or for installing valves in existing piping systems.



S113 (Soc x Soc)



S114 (Spig x Soc)

Basic Dimensions

Part Number	Size	M	N		L	
			Min.	Max.	Min.	Max.
S113-25	2-1/2	4-11/16	8-7/8	14-7/8	12-3/8	18-3/8
S113-30	3	5-1/2	9-1/2	15-7/16	13-1/4	19-1/4
S113-40	4	6-3/4	9-3/4	15-3/4	14-1/4	20-1/4
S113-60	6	9-5/16	11-1/2	17-1/2	17-5/8	23-5/8

Part Number	Size	M	N		L	
			Min.	Max.	Min.	Max.
S114-25	2-1/2	4-11/16	10-5/8	16-5/8	12-3/8	18-3/8
S114-30	3	5-1/2	11-3/8	17-5/16	13-1/4	19-1/4
S114-40	4	6-3/4	12	18	14-1/4	20-1/4
S114-60	6	9-5/16	14-9/16	20-9/16	17-5/8	23-5/8