

PVC Compression Couplings



- Designed for Quick Connections, System Modifications or Repairs
- Completely Redesigned for Improved Versatility
- PVC White plus New Industrial PVC Gray
- Easy-Thread Compression Nut
- New Spigot Conversion Capability
- Full Service 200 PSI Pressure Rating
- NSF Certified for Potable Water Use

PVC White

Part Number	Size	Std Pk	Mstr Ctn	Disc Code	Price Each
Buna-N Gasket					
S110-05	1/2	28	0	024	3.67
S110-07	3/4	24	0	024	4.96
S110-10	1	20	0	024	6.43
S110-12	1-1/4	10	0	024	9.86
S110-15	1-1/2	16	0	024	10.18
S110-20	2	12	0	024	13.24
S110-25	2-1/2	6	0	024	24.90
S110-30	3	4	0	024	32.60
S110-40	4	4	0	024	53.62
S110-60	6	1	0	024	121.94

PVC Gray

Part Number	Size	Std Pk	Mstr Ctn	Disc Code	Price Each
EPDM Gasket					
S110E-05G	1/2	28	0	024	4.37
S110E-07G	3/4	24	0	024	5.86
S110E-10G	1	15	0	024	7.56
S110E-12G	1-1/4	10	0	024	11.66
S110E-15G	1-1/2	16	0	024	12.04
S110E-20G	2	12	0	024	15.62
S110E-25G	2-1/2	6	0	024	29.41
S110E-30G	3	4	0	024	38.46
S110E-40G	4	4	0	024	63.27
S110E-60G	6	1	0	024	143.89

Compression Coupling Nut Wrenches

Part Number	Size	Std Pk	Mstr Ctn	Disc Code	Price Each
CCW-005	1/2	1	50	299	11.33
CCW-007	3/4	1	50	299	11.53
CCW-010	1	1	50	299	12.02

Compression Coupling Nut Wrenches (continued)

Part Number	Size	Std Pk	Mstr Ctn	Disc Code	Price Each
CCW-012	1-1/4	1	50	299	13.60
CCW-015	1-1/2	1	50	299	14.67
CCW-020	2	1	50	299	16.39
CCW-030	3	1	25	299	20.16
CCW-060	6	8	0	299	30.32

* CCW-20 - Wrench also fits 2-1/2" Coupling Body

**CCW-30 - Wrench also fits 4" Coupling Body

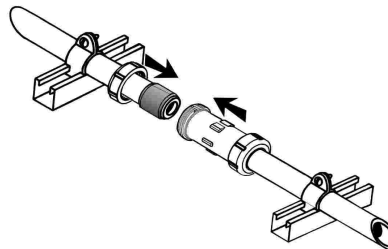
Compression Coupling Nut Wrench Set

Part Number	Size	Std Pk	Mstr Ctn	Disc Code	Price Each
CCW-000	Set	1	50	299	94.70

Complete Set of Wrenches, Sizes 1/2 - 3

Easy Installation

Spears® Compression Couplings easily install by simply sliding nut over pipe, slip on gasket, then insert into body and tighten nuts.



NOT FOR USE WITH COMPRESSED AIR OR GAS

Made in the U.S.A.

Thursday, January 13, 2011 7:36:56 AM

Page 24

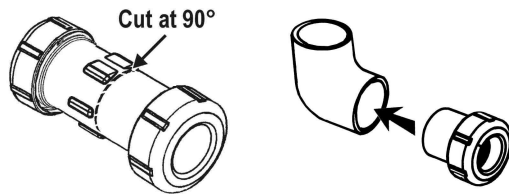
Progressive Products from Spears® Innovation and Technology



PVC Compression Couplings

Convert Fittings to Compression Outlet

Socket-type fittings 3/4" through 3" can be easily converted to compression outlet sizes 1/2" through 2-1/2" by simply cutting the Compression Coupling at the center holding ribs and solvent welding the spigot body into a fitting socket.



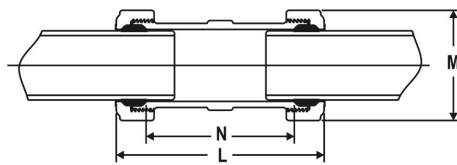
Compression Coupling Size (in.)	Body Spigot Size (in.)
1/2	3/4
3/4	1
1	1-1/4
1-1/4	1-1/2
1-1/2	2
2	2-1/2
2-1/2	3

Important Installation Note

WARNING: The compression joints provide a positive seal but do not restrain pipe from thrusts and movement under pressure. Use of compression joint requires blocking connecting pipe to prevent any movement. Failure to do so can result in system failure or severe personal injury. Use in cold water/fluid applications only.

Basic Dimensions

Part Number	Size (in.)	L	M	N
S110-05	1/2	5-3/16	1-3/16	3-3/8
S110-07	3/4	5-7/16	2-1/16	3-9/16
S110-10	1	5-11/16	2-7/16	3-3/4
S110-12	1-1/4	6-1/4	2-15/16	4-1/8
S110-15	1-1/2	6-1/2	3-5/16	4-5/8
S110-20	2	7-1/8	3-3/4	5-1/16
S110-25	2-1/2	8-11/16	4-11/16	5-7/8
S110-30	3	9-1/2	5-1/2	6-3/16
S110-40	4	11-5/16	6-3/4	7-3/8
S110-60	6	11-5/8	9-5/16	7-9/16



N = Maximum allowable space between pipe ends.

NOTE: Decreasing distance between pipe ends improves stability and is recommended.